

the **Lisbon** council

making Europe fit for the future

Leveraging Human Capital for rising prosperity of the North Sea region

Peer Ederer, Phd

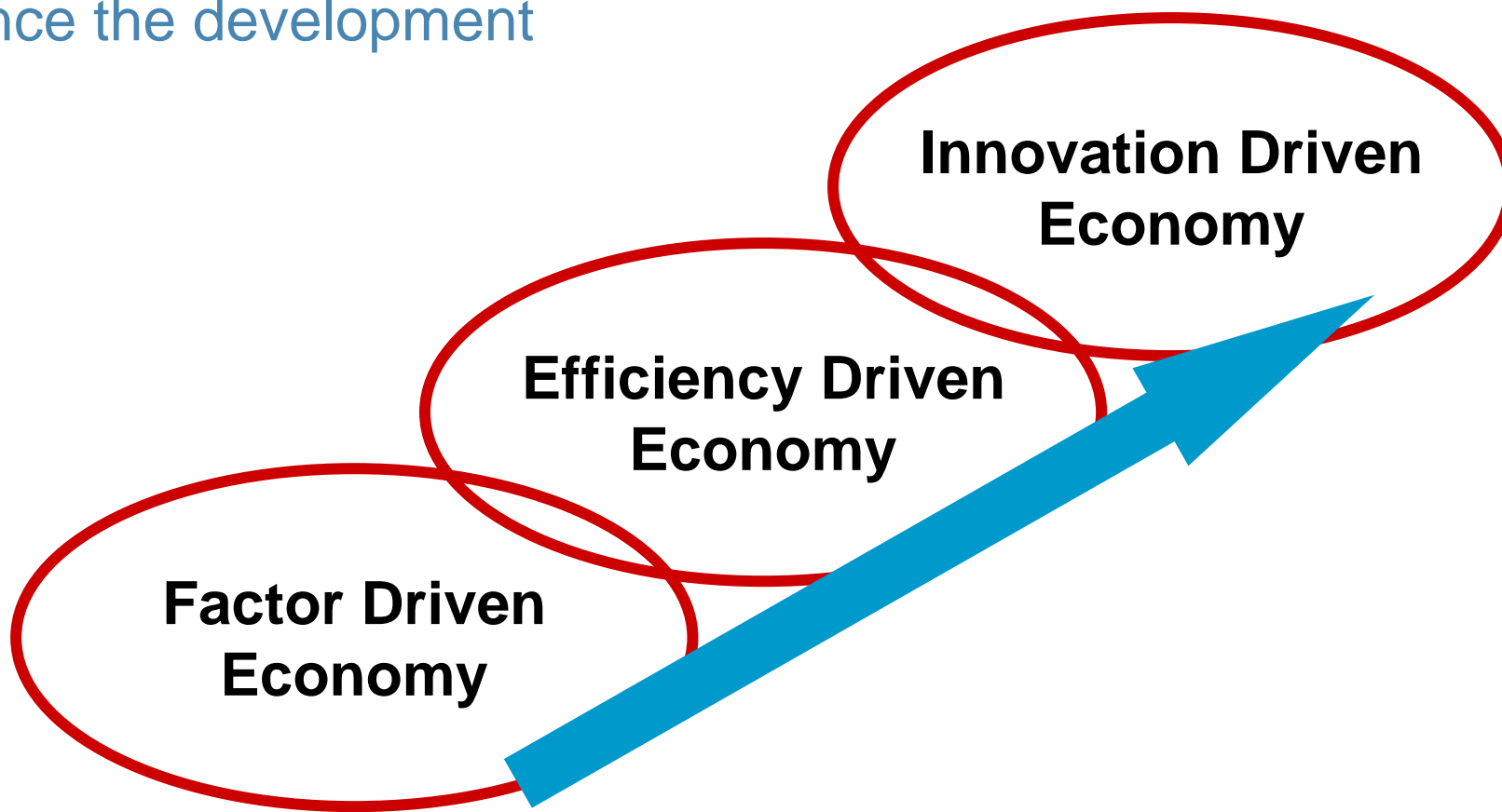
Director European Human Capital Project, Lisbon Council

Brunstad, June 20th 2007

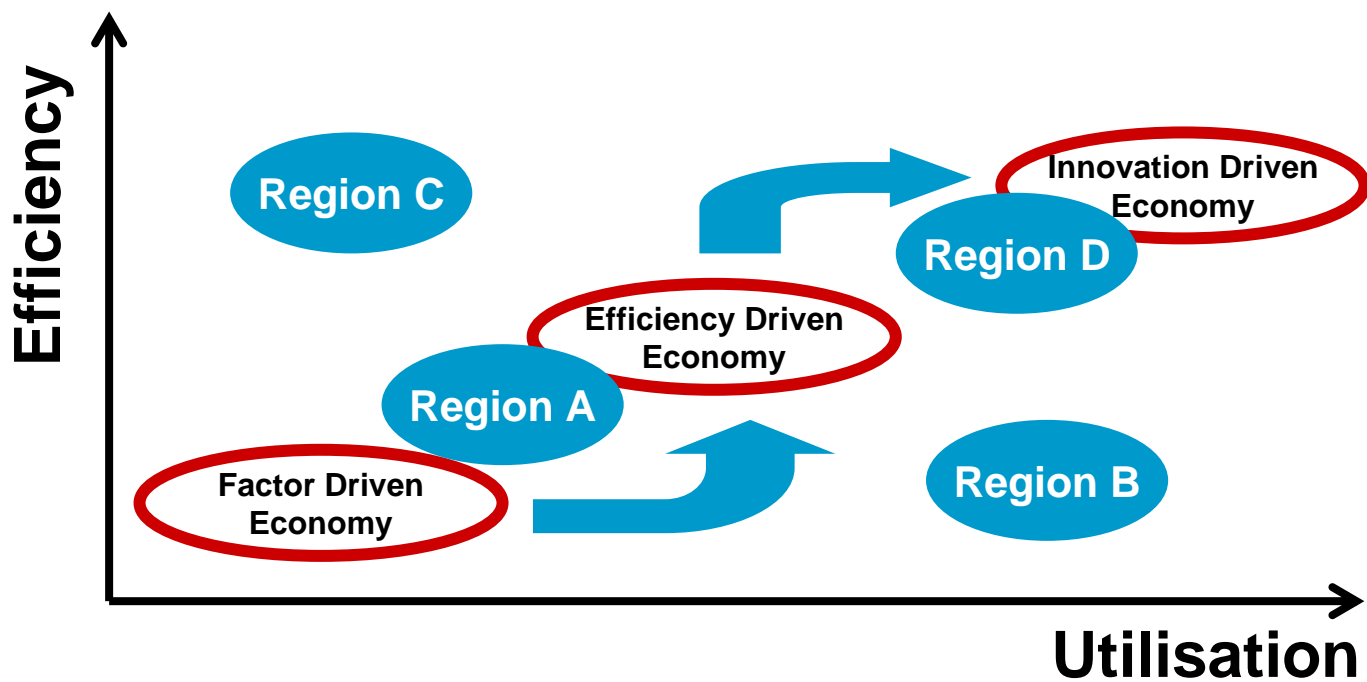
Human Capital makes all the difference

| | Russia | Nigeria |
|------------------------|--|--|
| GDP 1990 | 90 b\$ | 28 b\$ |
| GDP 2004 | 764 b\$ | 99 b\$ |
| Population 2004 (1990) | 144 m (148) | 137 m (93) |
| Exports | 60% oil+minerals=160 b\$ | 95% oil+minerals=50 b\$ |
| Politics | nominal democracy | nominal democracy |
| Business Climate | entrenched corruption open market economy | entrenched corruption open market economy |
| Economic Freedom Index | 120 | 131 |
| Literacy 2003 (1990) | 99% (99) | 68% (48) |
| Tertiary Edu Enrolment | 53% | 3% |

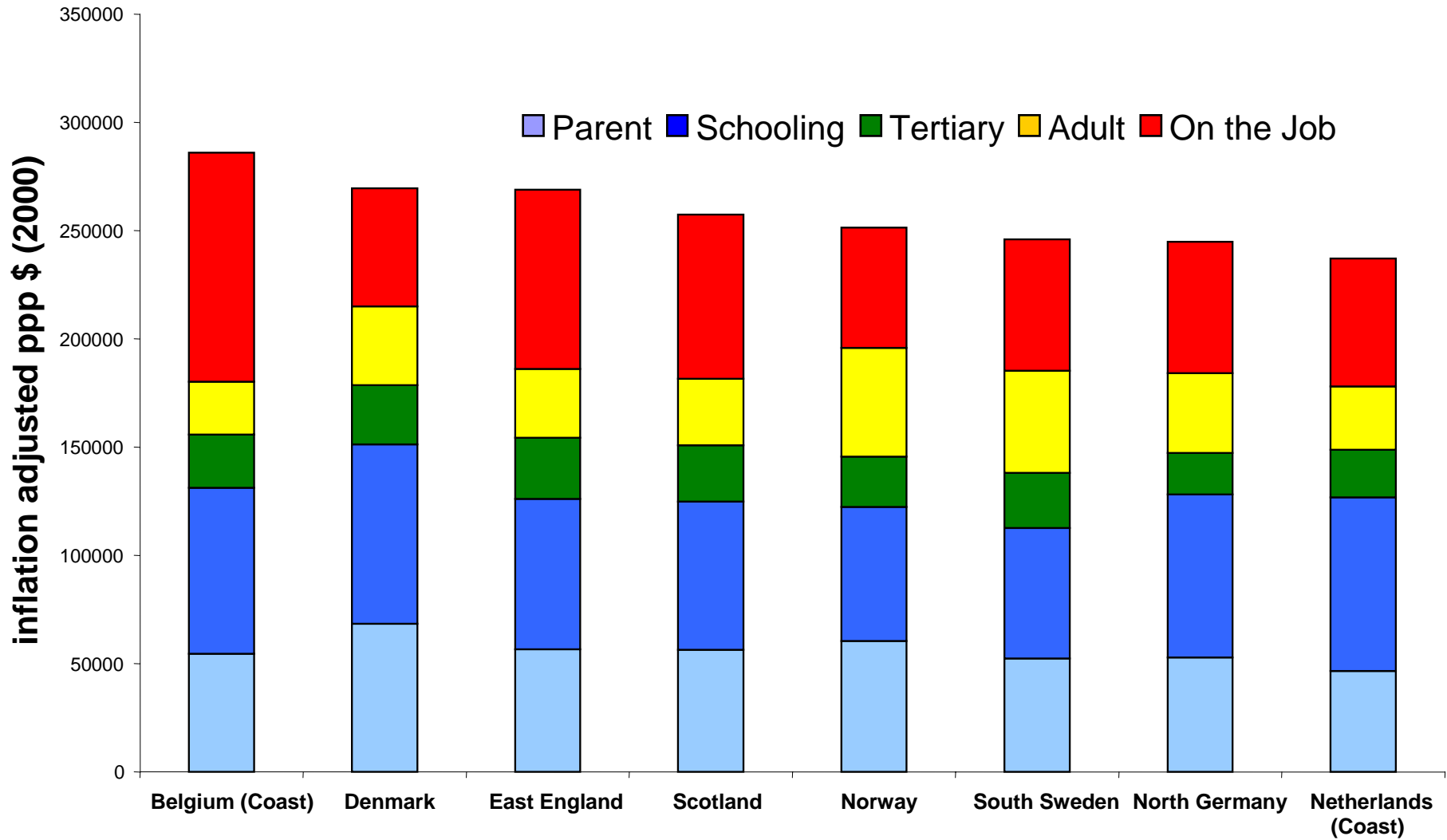
The Human Capital Index provides an indication of how far a region has moved towards the innovation driven economy – and show which leverage points exist to advance the development



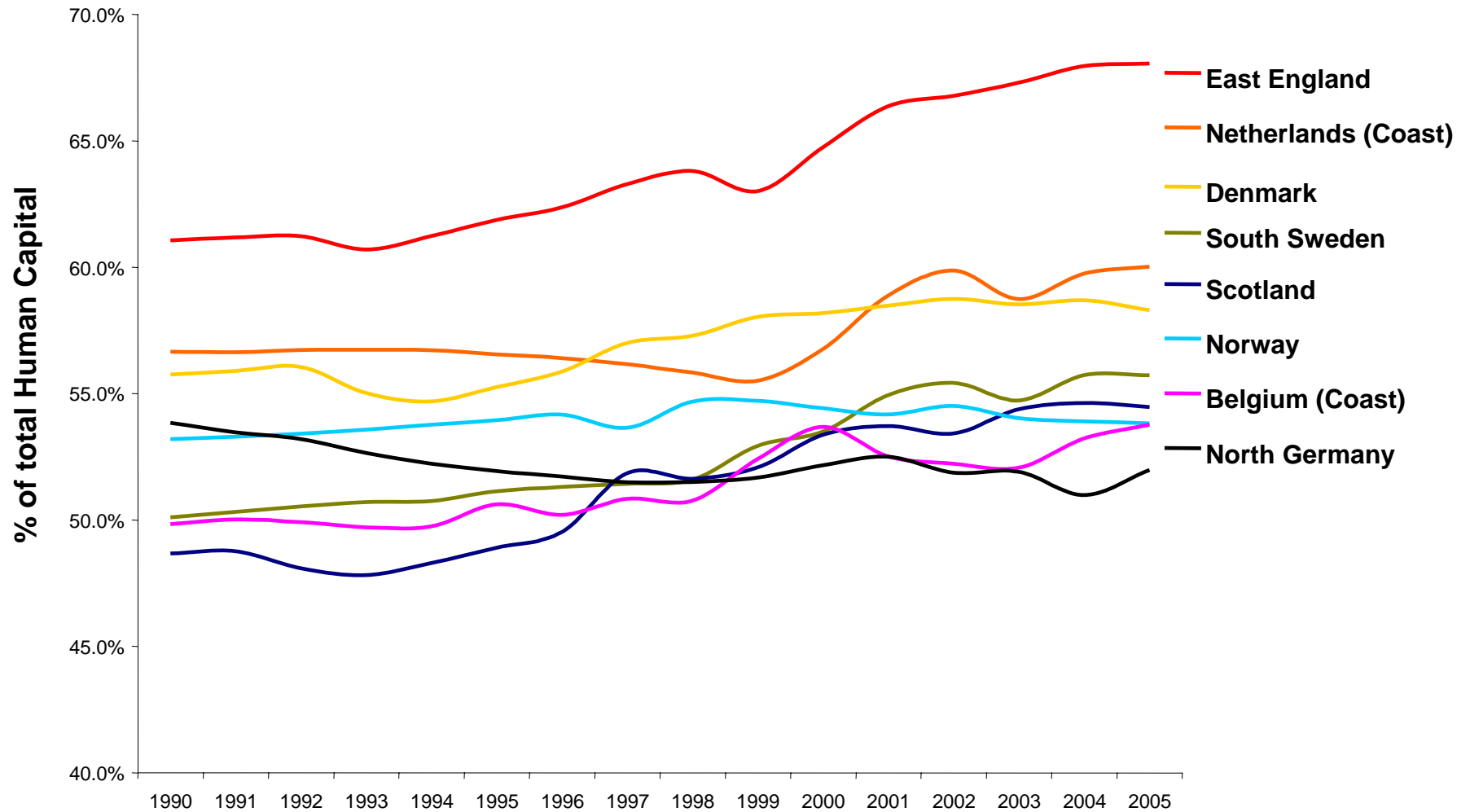
Innovation-driven economies enable the synthesis of efficiency and utilisation of human capital resources



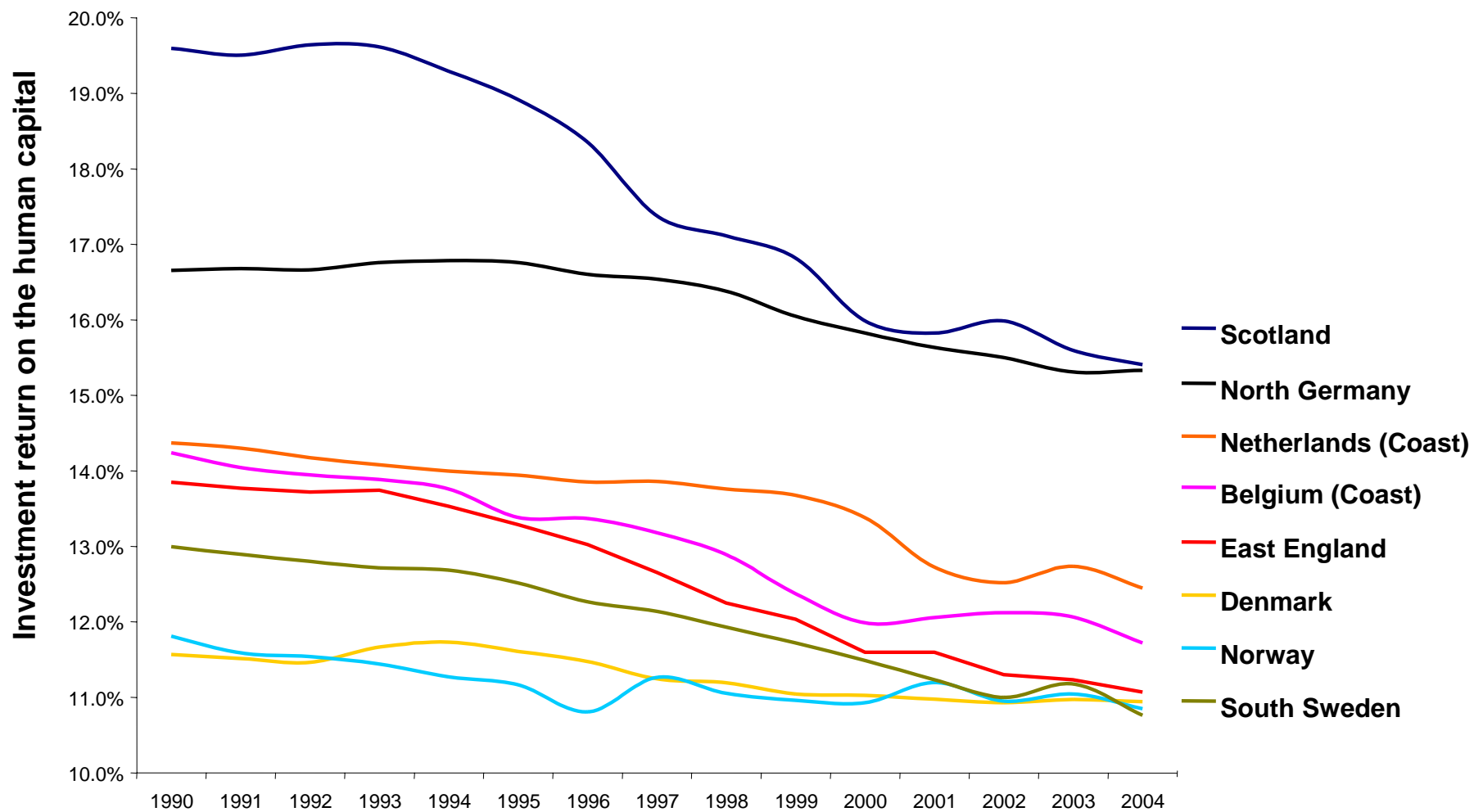
Human Capital Endowment per Employed Person (2004)



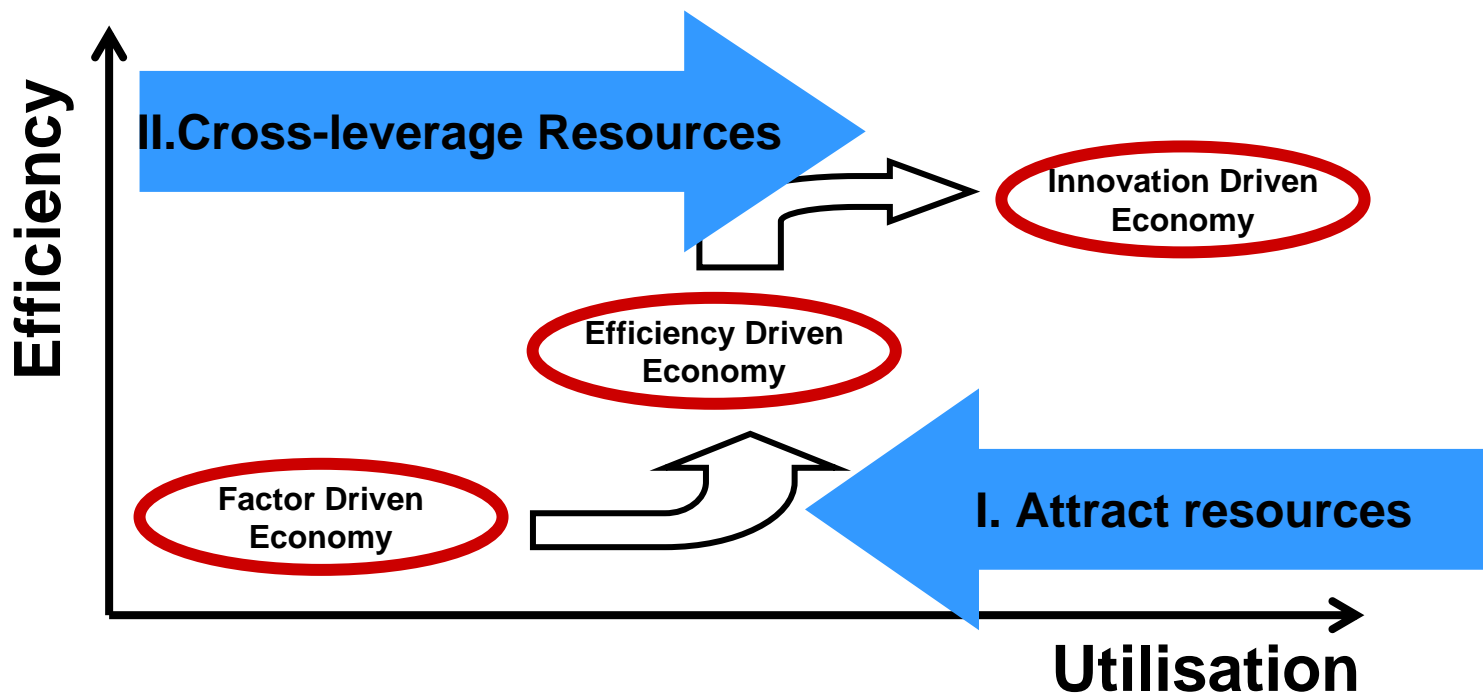
Utilizing the human capital you have



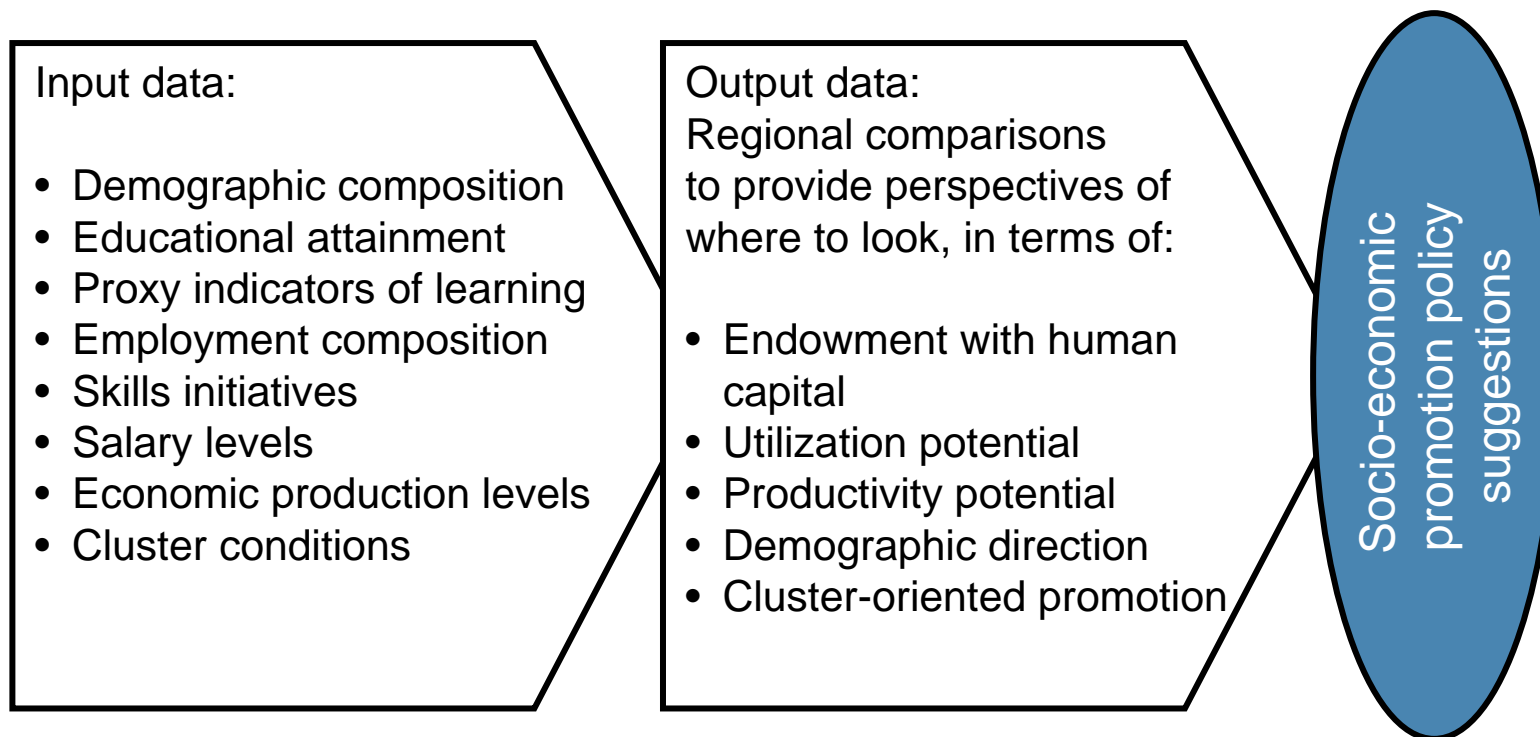
Using your human capital efficiently



The key to an innovation-driven economy is to reinforce and cross-leverage locally available cluster resources towards competitive advantage



Creating a Human Capital Compass for regional development



Audiences

'No one has worked out the impact of knowledge like this before.'
The Economist, October 2006

OECD Education Department and their INES B expert network from 28 countries

US State Department, Intelligence and Research Bureau

Federal Government of Canada, Policy Research Initiative

Federal Ministry of Education and Research, Germany

Centre d'Analyse Strategique of the French Prime Minister's Office

Korea Research Institute for Vocational Education and Training

Thank you !

Peer Ederer, Phd

Director European Human Capital Project, Lisbon Council
+49 171 55 164 99
www.lisboncouncil.net