

Water and Climate Change Adaptation in Dordrecht

Ellen Kelder
25-02-2015

The Interreg IVB
North Sea Region
Programme



Climate Adaptation Mainstreaming through Innovation

DORDRECHT



Presentatie

1. Intro Dordrecht
2. Projects since 2005
3. Task Delta Decissions for Dordrecht
4. Activities to reach the goal
5. Coherence between the activities
6. New Interreg proposals
7. Participation in Networks (e.g. city-2-city learning)

1. Intro Dordrecht

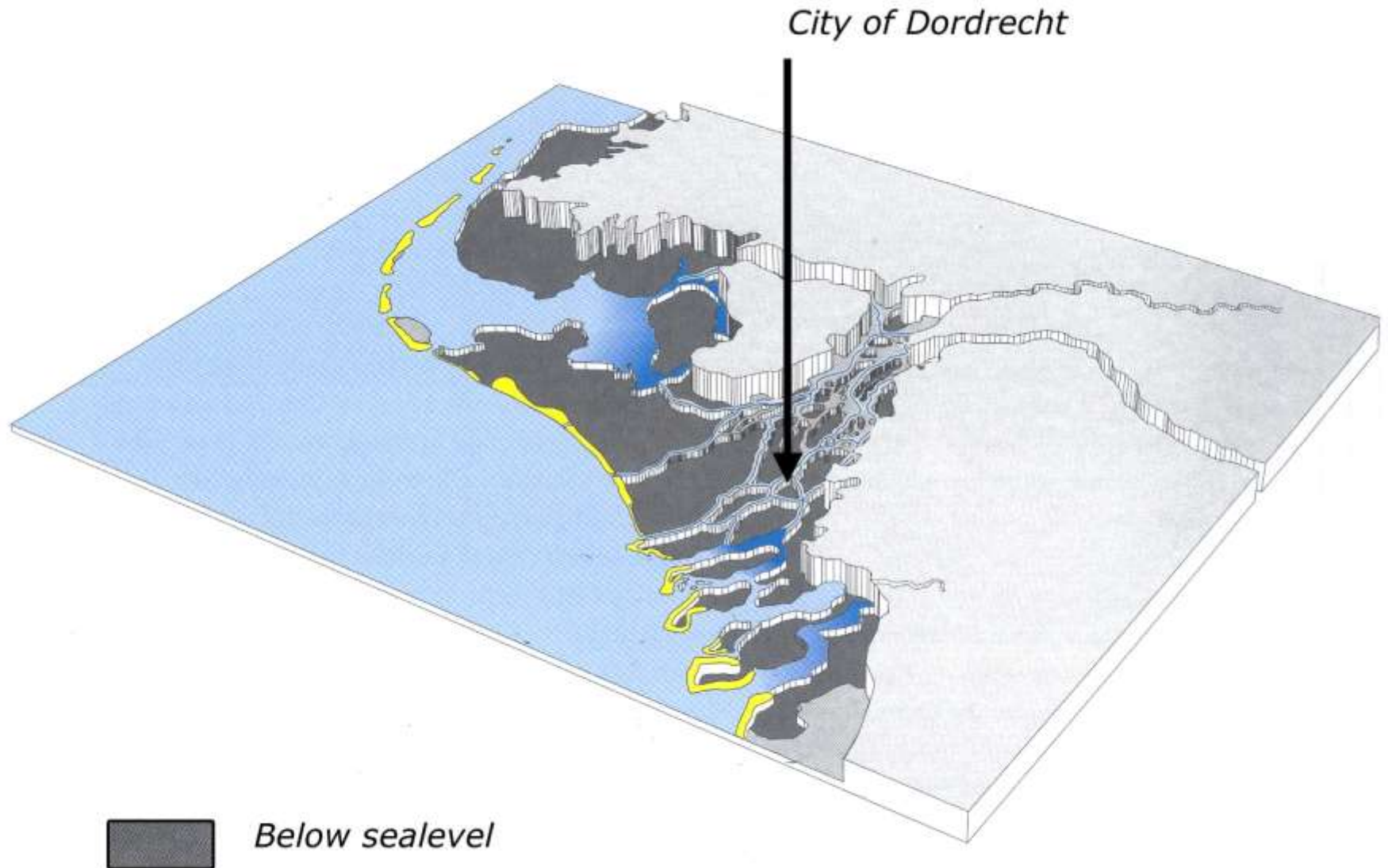
Dordrecht: City in a Delta



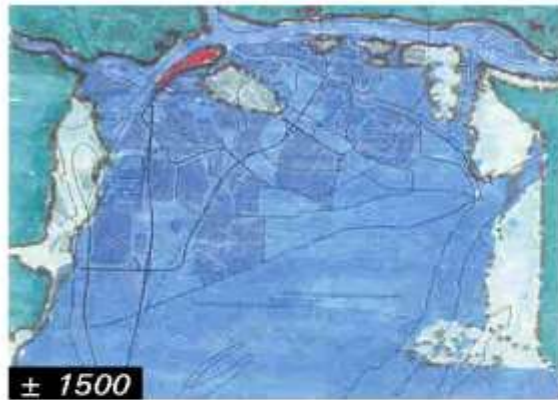
Introduction to Dordrecht



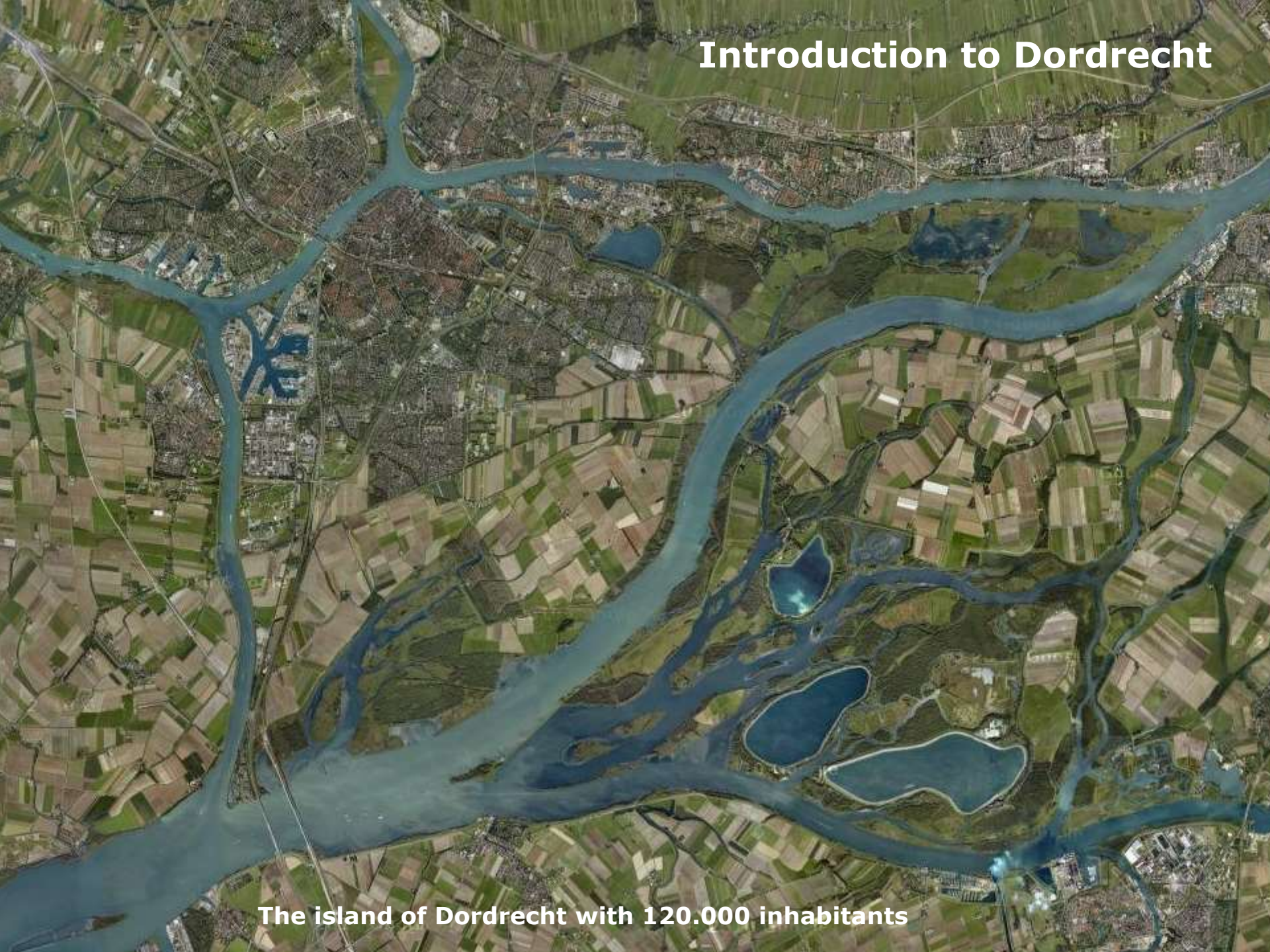
Position in lowlands of the Netherlands



Historic development after St. Elisabeth flood (1421)

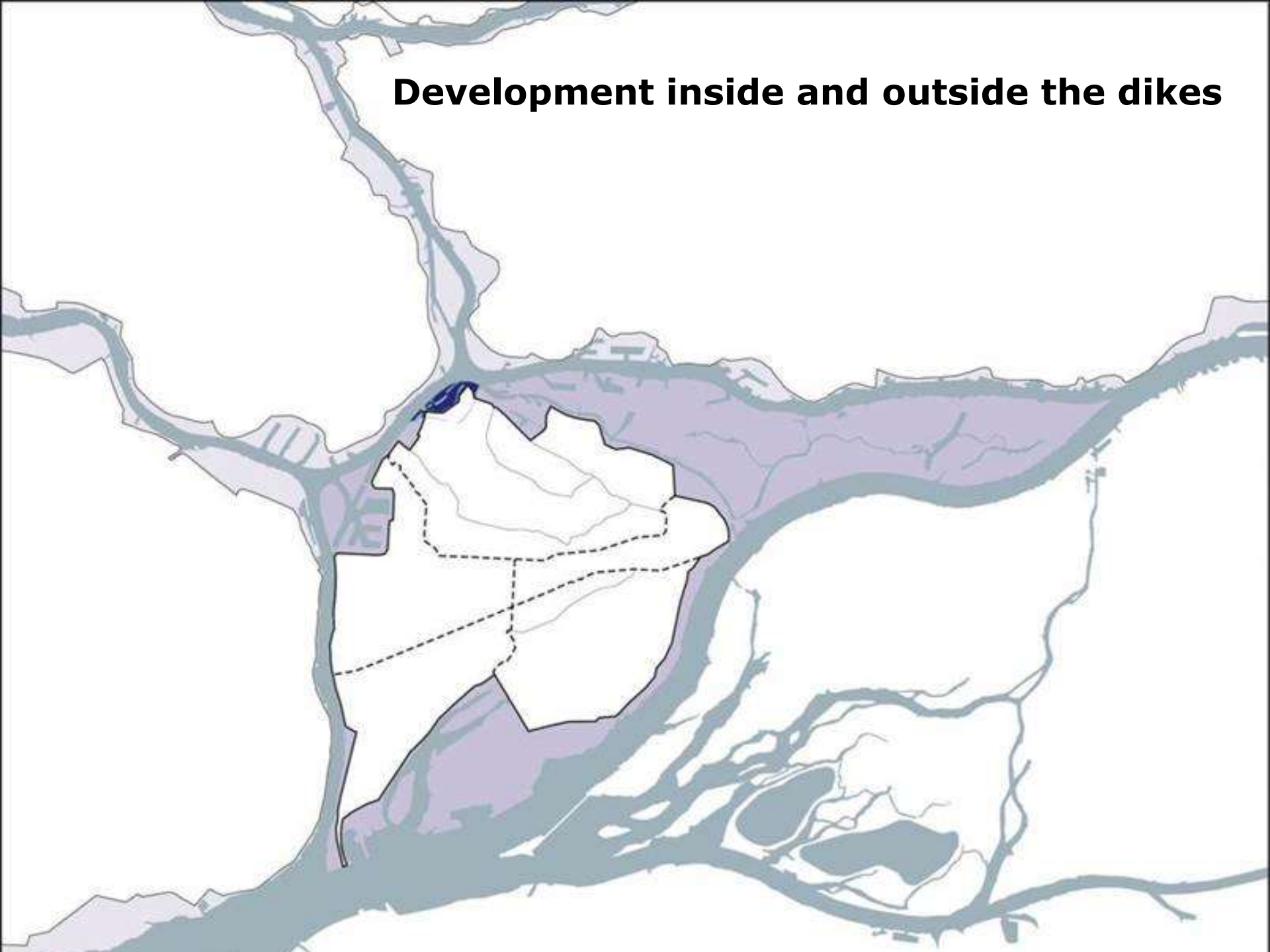


Introduction to Dordrecht



The island of Dordrecht with 120.000 inhabitants

Development inside and outside the dikes



2. Projects since 2005



- UFM: Urban Flood Management (2005 – 2008)



- MARE: Managing Adaptive Responses to changing Flood Risks (2009 – 2012)



- CAMINO: Climate Adaptation Mainstreaming through INnOvation (2013 – 2015)



Climate Adaptation Mainstreaming through Innovation

(financial instruments: ❖ **Presentated by Jeroen Rijke**)



- National Delta Programme: 2010 - 2014

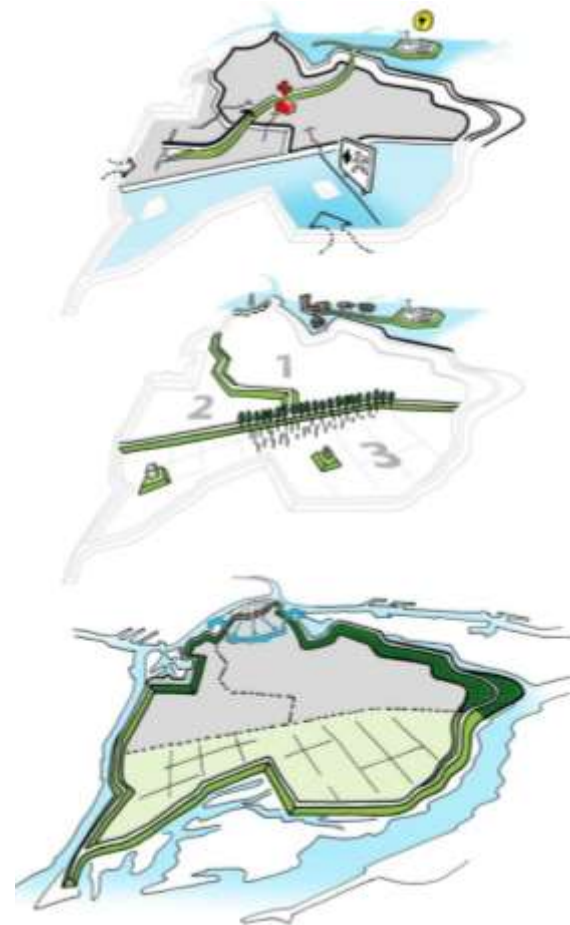
3. (1) Task Delta Decission *Spatial Adaptation*

- Realise the strategy to act water robust and climate proof in 2020 so Dordrecht will be water robust and climate proof in 2050
- Making a local assessment for climate resilient and water robust designs together with the Water Board by flolowing through the next steps:
 - analysis
 - ambition
 - implementation



3. (2) Task Delta Decision Water Safety (Flood Risk)

- The execution of the preferred floodrisk management strategy for the region Rotterdam Drechtsteden (Dordrecht)
- Explore the possibilities of a Multy Layer Safety approach of the floodrisk management strategy for the Island of Dordrecht



3. (3) Implementing DD: Mainstreaming

- Fully exploit the added value of water to realise the ambitions of related policy areas.
- Internal cooperation (between sectors in the administration) and external cooperation (between city partners) to develop a shared vision and strategy that helps to realise mainstream opportunities and spatial and social development opportunities

❖ **Presentated by Edwin van Son**



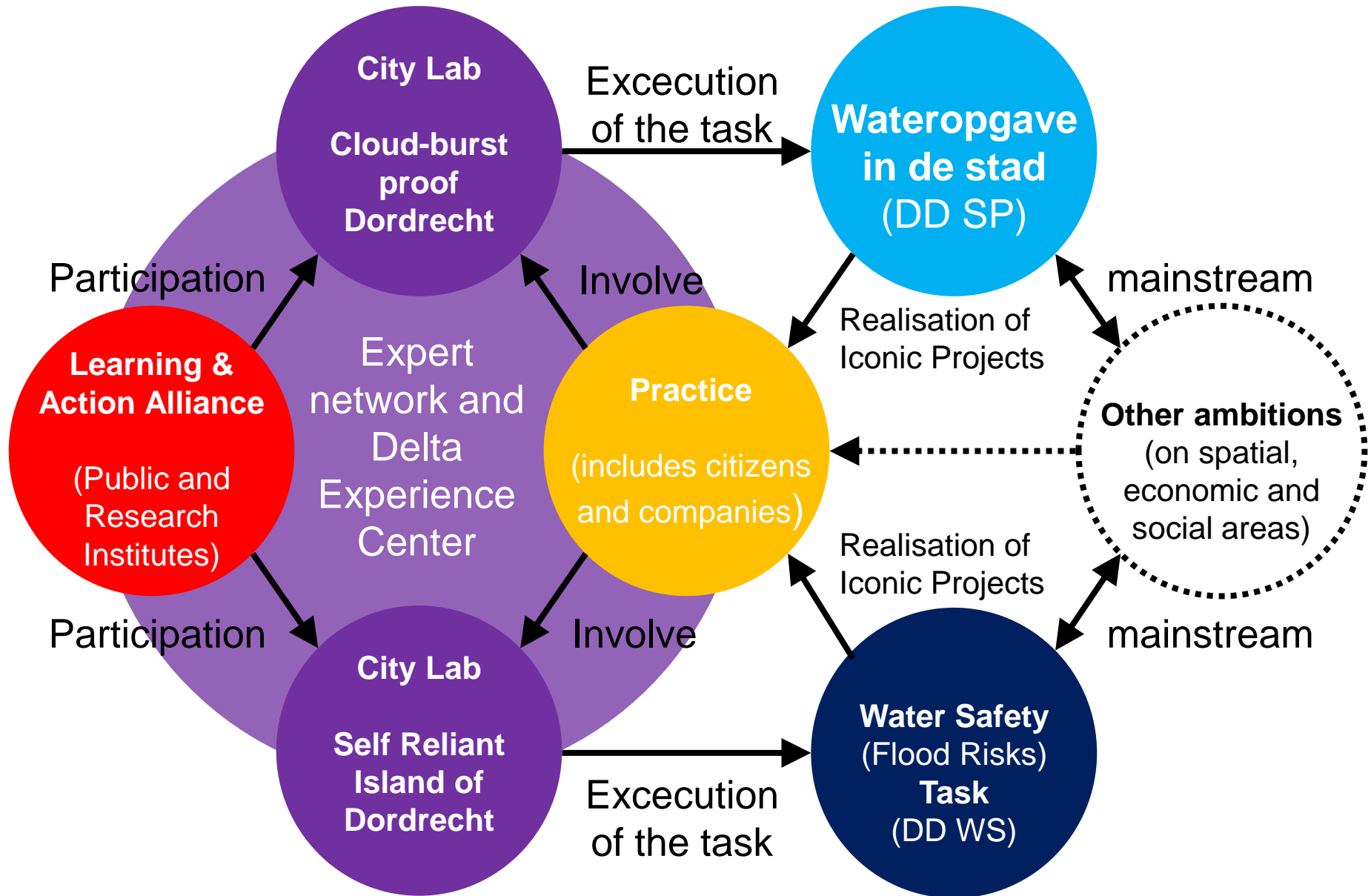
4. Activities to realise the tasks 2020 => 2050

1. Implementation of the Task of the DD Spatial Adaptation
2. Implementation of the Task of the DD water Safety (flood Risk)

Driven from other ambitions:

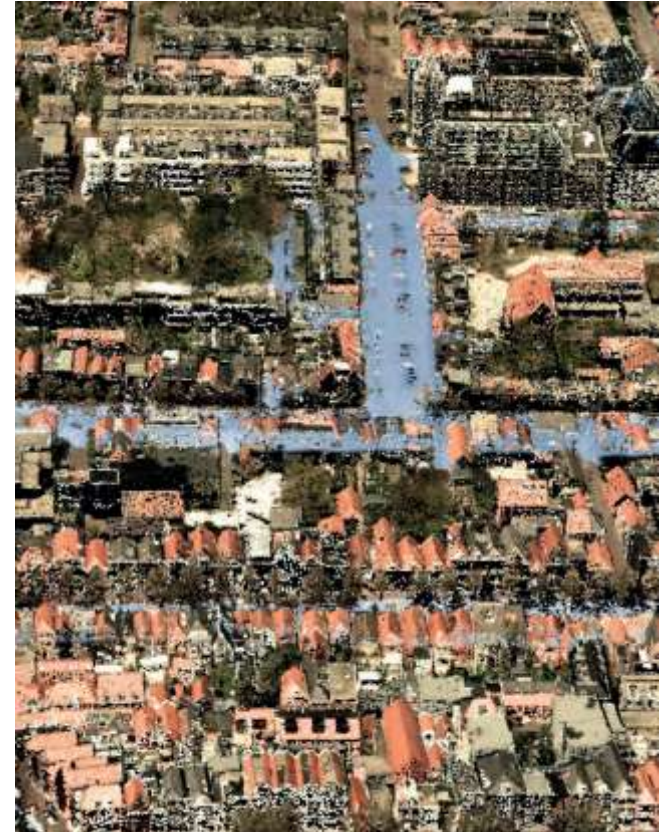
3. Foundation of the Expert Network and Delta Experience Center
4. Execution of the Interreg projects
5. Coordination of networks (e.g. making cities resilient campaign / city-2-city learning)

5. Coherence between the activities



Climate (Spatial) Adaptation strategy Dordrecht

- City of Dordrecht & Waterboard
- Steps
 - ✓ analysis
 - ✓ ambition
 - ✓ implementation



Flood Risk management strategy for the Island of Dordrecht

- MIRT research Multi Layer Safety Island of Dordrecht
 - ❖ Presented by Edwin van Son
- Adaptation strategy Historical Harbour Area
 - ❖ Presented by Paul Bezemer

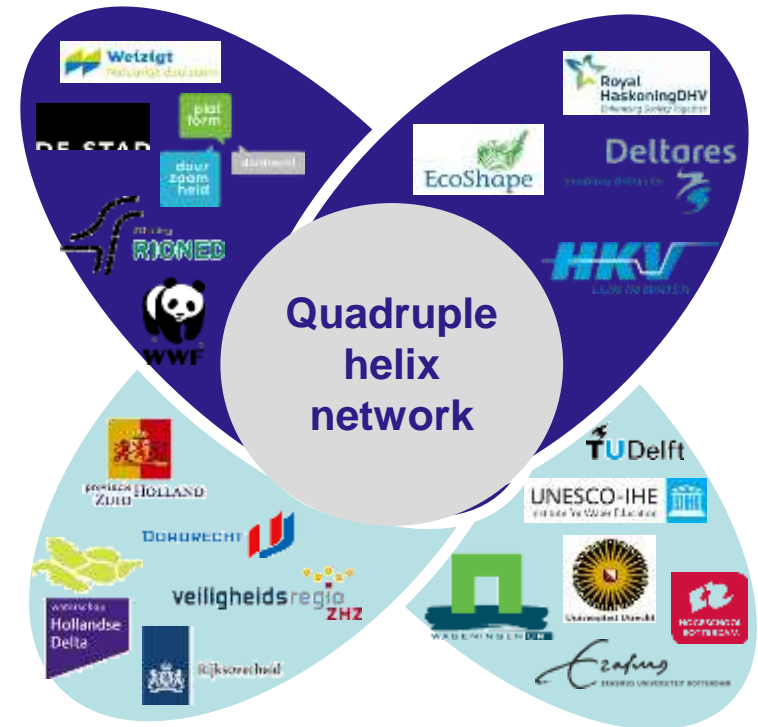


Expert network and Delta Experience Center

- **Expert network (MERWE):**
- **City Lab Cloud-burst Proof Dordrecht**
- **City Lab Self Reliant Island of Dordrecht**
- **Innovationprogramme**
- **Delta Experience Centrum (DEC):**

NGO's/citizens

Companies



Public organisations

Research Institutes

❖ **Presentated by Liesbeth Schipper**

6. New Interreg proposals

Follow-up of CAMINO



- Initiator of 1 proposal:
 - (i) Blue/green infrastructure,
 - (ii) Sociale innovation
 - (iii) Governance en Financincing
- Participate in 3 proposals:
 - (1) Resilient Communitcies (Initiator VRZHZ),
 - (2) Building with Nature (Initiator RWS ZHZ),
 - (3) Adaptation and e en Mitigation in urban areas (Initiator City of Nijmegen)

7. Coördination

Participation in Networks:

- UNISDR campaign: Making Cities Resilient

❖ **Presentated by Berry Gersonius
and Ellen Kelder**

