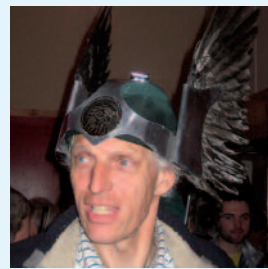


"Dear reader,

In spite of the Icelandic Eyjafjallajökli volcano eruption all partners managed to meet at the end of April on the Shetland Islands for the third partner meeting. In addition to the official meeting, we were welcomed by the remaining Vikings of the Shetlands. This warm welcome was mostly appreciated as compensation for the cold, windy and rainy weather. We were very happy to see that the project is running well and partners are helping each other on numerous areas. The knowledge institutes started all kinds of tests on the different islands and EPEA has been advising the institutes on how best to add the Cradle to Cradle® method to these tests. Furthermore we are proud to mention that our project extension has been approved. More details about the extension are to follow in this newsletter.

On behalf of the Cradle to Cradle Islands project team we wish you a nice summer."

*Anne de Vries, project manager
Hans van Meerendonk, project coordinator*



The Cradle to Cradle Islands project works towards a clean and healthy future for the islands in the North Sea region through the implementation of innovations based on the Cradle to Cradle® concept.

Cooperation

During the Shetland meeting it became very clear that the project partners are helping each other in numerous areas. A few examples of these cooperations:

- Aalborg University developed an 'Interactive SWOT energy tool' for the islands Spiekeroog, Samsø and Runde. The islands Tjörn, Anholt and Ameland are also interested. The energy tool shows to what extent islands are self sufficient with energy and helps islands to facilitate energy planning.
- Lund University conducted a study of the Samsø energy concept called 'Spinning it Samsø style' as part of their MSc programme on Distributed Economies: students prepare a field study on the islands Tjörn and Spiekeroog. During this field study the students will be introduced to the Cradle to Cradle® concept.
- For the project Eternal Holiday House on Ameland the partners of Wetsus, Vitens, Wetterskip Fryslân, EPEA, Delft University of Technology and the municipality of Ameland have combined their strengths to adjust the existing holiday house 'Bambi' into a payable, modern and self supporting holiday house ready for the next decades to come. Furthermore, the house

teaches tourists how to look at water, energy and materials in a different way.

- OOWV met with experts on the island Spiekeroog to discuss plans to renew the sewage system on the island, involving the Cradle to Cradle® concept.
- The universities of Delft, Aalborg and Lund have been working together to make the Spa/swimmingpool of Spiekeroog energy efficient.



WATER



ENERGY



MATERIALS



- Delft University introduced new sub projects on a few islands: On Ameland the cargo bike system 'vrachtfiets' was successfully introduced in a holiday park. This bike can easily replace a car on the island. On Texel they introduced an energy efficient new outdoor lighting system. A nice bonus for the sponsor is that the led lights will also beam free advertising on the street.
- EPEA is coordinating efforts to translate the Cradle to Cradle Island brochure into the partners' national languages, so the project can be communicated more easily to local stakeholders. German and Norwegian translations are already available. Danish, Dutch and Swedish translations will follow.



Project extension

We are proud to mention that the extension of the Cradle to Cradle project was approved in the beginning of June by the North Sea secretariat in Viborg. The extension has 4 components and two new partners outside the North Sea Programme eligible area. The budget for the project has now increased by € 500.000,-, so the total project budget is € 4 million.



The extension components

1. Development of a secondary network of interested parties world wide - Cradle to Cradle Islands Knowledge Exchange Network (KEN) - for spreading the philosophy and results of Cradle to Cradle Islands. Various communication tools will be used for this purpose. For example a virtual Eternal Holiday House will demonstrate innovations on water, energy and materials.
2. Municipality of Tjörn (Sweden) will develop new activities on Tjörn Island with the higher budget. The following projects are envisaged:
 - a climate and energy plan for the municipality to be a tool for continuous development in the energy field.
 - future design of the ferry route between the main land and the smaller islands.
 - analyse overall infrastructure on the islands Åstol, Dyrön and Tjörnekalv.
 - a study to increase self-sufficiency in drinking water and then the actual implementation.
 - increase biogas production.

3. Organisation of a broader final project conference with an exhibition.
4. Two partners outside the eligible area could join the project: Urban Answers - a sustainability city planning company from New York (USA) and the University of Oulu (Finland). The province of Fryslân is responsible for the execution of the activities of both partners.

Urban Answers: will execute a citywide Cradle to Cradle Islands feasibility study in New York. This study will canvass the existing sustainable innovation activities taking place in New York City to determine potential partners, identify achievable projects and envision innovative solutions on Roosevelt Island, Governors Island and Jamaica Bay. Other islands are also under consideration. The New York team includes the Columbia and the Fordham Universities and the Roosevelt Island Operating Corporation (RIOC), which organisation 'see the C2CI project as an excellent way to organize their sustainability agenda and simultaneously leverage like minded resources and knowledge beyond their borders'.

Main points of interest for RIOC are:

- possible projects in the field of water, energy/mobility and materials.

- raise awareness about and profile Roosevelt Island as a sustainable island.
- target international and local funding possibilities for sustainable island projects.

University of Oulu: will cooperate with two municipalities - Hailuoto and Oullunsalo - to develop Varjakka Islands (Oullunsalo) as a sustainable tourism centre and learning environment. They construct historical, natural and seaside attractions, for which they use renewable energy from wood pellets and green energy from wind-mill parks in the region. Possible technology to be studied and executed in the development clusters:

- Energy/Mobility: geothermal energy from sea sediments.
- Water/Energy: sustainable handling of liquids and dry/compost toilets.
- Materials/Energy: use of innovative, defined materials and wood in buildings and sustainable procurement.
- Overall: creating sustainable and user-oriented environment with participatory and open innovation methods by using Cradle to Cradle Islands knowledge and experience.





You can use Cradle to Cradle® in every day products

The project also promotes the Cradle to Cradle® concept by showcasing products which have been developed according to the concept. Numerous products are already available and for everybody to use. So far the lead beneficiary tried to introduce some of those useable products to others:

- At the start meeting in Leeuwarden all partners received a book: *Cradle to Cradle: Remaking the way we make things* by William McDonough and Michael Braungart. The book is a prototype of a 'technical nutrient'. It is printed and bound on 'synthetic' paper made of plastic resins and inorganic fillers designed to be broken down and circulated infinitely in 'technical cycles' – to be re-made into 'paper' or other products.
- The project pen is not Cradle to Cradle®, but the plastic 'case' is made of corn and therefore biodegradable.
- At the second meeting all partners received a compostable T-shirt of Trigema made of 100% bio cotton. We tell our partners that if they don't like the T-shirt anymore, they can just dig it into their garden. The T-shirt will be decomposed in about 3 months.

- During the last meeting the speakers received a bag with some Method products, like bathroom flushable, glass cleaner spray, shower spray, hand soap and wood microfiber cloth. Just ordinary things for every day use.
- And maybe for the next meeting we will buy some Cradle to Cradle® toilet paper. Why not?

A few websites for product inspiration-

www.epea.com (language: German and English. Search for clientlist)

- www.c2cportal.net (language English. Search for products)
- www.methodproducts.co.uk (language English)
- www.biggreensmile.com (language English. Search for the brand 'Method')
- www.trigema.de (language: German. Search for Cradle to Cradle T-shirts)
- www.cradletocradle.nl (language: Dutch. Search for producten/productengids)
- www.wiegototweg.nl (language: Dutch)

News in brief

- At the Annual conference in Stavanger Norway on the 16th and 17th June on behalf of the Province of Fryslân, Simon Tijmsa presented decentralised solutions in a new media tool as a contribution for the new programme period of Interreg.
- The province of Limburg has started a Cradle to Cradle Network project in the Interreg IVC programme. The project was launched on Thursday, 8 July 2010 in Maastricht (The Netherlands) and the website (www.c2cn.eu) will be ready in August 2010.
- The next partner meeting will be held on 5 and 6 October on the Danish island of Samsø. The Samsø

- Energy Academy and Aalborg University are in the process of preparation. Topics of this meeting are communication and the real story of Samsø.
- Due to the difficult current economic situation the Nutec fair in Frankfurt has been rescheduled to 2011. Companies who were unable to participate can still get involved.
- Søren Hermansen of the Samsø Energy Academy has won the Göteborg Award for his work in making Samsø the Danish Renewable Energy Island. Al Gore and Margot Walström are among former winners of the prize.

THE C2C ISLANDS NEWSLETTER IS CIRCULATED BY E-MAIL AS MUCH AS POSSIBLE. A LIMITED CIRCULATION IS PRINTED ON ENVIRONMENT-FRIENDLY PAPER.

The Cradle to Cradle Islands project: a partnership of 12 islands and 12 other organisations (government bodies, educational, environmental and water organisations) cooperating for a healthy and clean future for islands in the North Sea Region.

The partnership: (NL) Provincie Fryslân (Lead Partner), Delft University of Technology, Wetsus, Vitens, Ameland, Texel, Wetterskip Fryslân, HZ University of Applied Sciences; (UK) PURE Energy Centre, Shetland Islands Council, IRR; (G) Spiekeroog, Insel- und Halligkonferenz, OOWV; (DK) Aalborg University, Samsø Energiakademi, Norddjurs; (SE) Lund University/Ven en Tjörn; (N) Runde Environmental Centre and Storbågan Environmental Centre.

Would you like to know more or want to contribute to the project? Visit our website or contact us.

Website:
www.c2cislands.org
Contact:
info@c2cislands.org

European Union



The European Regional Development Fund



EPEA

The Interreg IVB
North Sea Region
Programme



provinsje fryslân
provincie fryslân



Investing in the future by working together for a sustainable and competitive region