



April 2013 – September 2013

SEEDS

NEWSLETTER VOLUME 2

SEEDS stands for **Stimulating Enterprising Environments for Development and Sustainability**. It is funded by the ERDF Interreg IVB North Sea Region programme.

Welcome to our second newsletter. Our partners have been very busy over the past six months: our **pilot sites** are progressing well with some of them already completed; our online **forum** is beginning to offer some interesting discussions, the **pinboard** now has some intriguing images to share, and the **blog** plays devil's advocate; our **Flickr** site sports a variety of image collections; and our **YouTube** channel continues to expand. We are continuing to research what works and what doesn't when trying to set up and run a re-use project and we have met some interesting partners for SEEDS along the way.

**Did we grab your interest yet?
Good. Then read on...**



EVENTS AND ACTIVITIES

Park(ing) Day, Smedestræde DK

In addition to several events held in Smedestræde, the local community took part in the increasingly popular Park(ing) Day. Launched in 2005 by the American urban architecture company Rebar, the idea is to take a parking space and turn it into a greenspace for a day – it's like renting city real estate, but at the cost of parking charges only. That's pretty cheap. There have been some really wacky ideas over the years, but the community here chose to turn two parking spaces close to the pilot site into a small garden for two hours. It must have been pretty impressive; John Bela, the founder of Rebar, came to visit.



Cultural Warehouse, Hamburg DE, Opens to the Public

The Cultural Warehouse in Bernhard Nocht Quarter has opened its doors to the public. It commemorated completion of the building work with a topping out ceremony attended by the Hamburg Minister for Culture, and held a launch party to celebrate full completion of the building and the opening of its doors to the local community.



VISIT US ON FLICKR

View our gallery on Flickr and see what we've been taking part in.

Interested in joining in? Get in touch!

PROJECT GALLERY

St Kjeld's Quarter DK Gets Some Super New Furniture

An innovative teaching and building workshop, 'Each One Teach One', took place in St Kjeld's Quarter. Students from UoC and other learning centres designed and built moveable street furniture as part of the transformation process for a local square.



Creative Ideas Workshop, Gamlestaden SE

Gamlestaden held a Creative Ideas workshop around Bunkaberget (a large hill in the town centre), inviting the local community. It was held on-site and was designed around the themes of life and light, movement and space, and identity. The ideas that came from the event will help inform a design proposal for the area.

Noorderzon, Noorderlicht and De Flexibele Stad at the Sugar Factory, Groningen NL

Noordezon is a performing arts festival in Groningen which has been running for 20 years. This year it held some of its events at the Sugar Factory, one of which was the building of a ready-made internal housing unit that can be transported easily from one abandoned building to another for use as temporary housing.

An international photography festival, Noorderlicht, is held alternately in Groningen and Friesland. This year it was the turn of Groningen – and the Sugar Factory. The exhibition received 10,000 visitors in six weeks.

'De Flexibele Stad' is the title of a book on temporary use projects in The Netherlands. You can read more about it in the **Partners and Collaborators** section. The authors held a big book launch in the Sugar Factory, with national papers taking an interest.



PILOT PROJECTS

SEEDS has 20 pilot projects across the North Sea Region.

These are the pilots that have made recent progress.
You can find out about all 20 of our pilots on our [website](#).

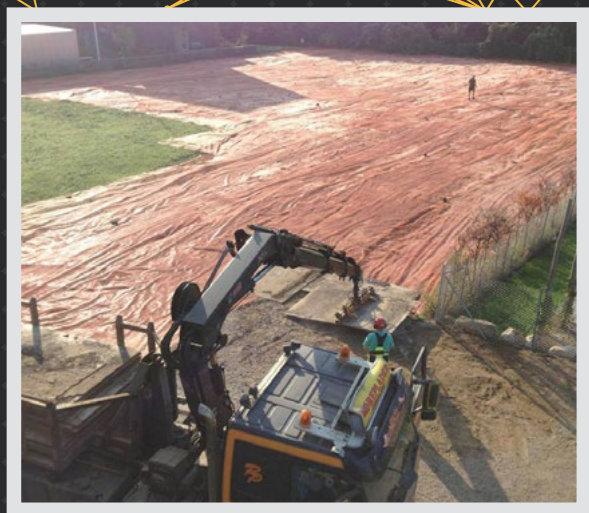
Empty Shops, Hamburg DE

Lawaetz Foundation has been working very closely with housing company SAGA-GWG and the local district administration on a housing estate in the Schnelsen Süd area of Hamburg. Over recent years the estate's shop has had several tenants who have come and gone, finally leaving the shop empty and shuttered. Through consultation with local residents, a sports association has agreed to run a club on the shop premises. Liaison with local groups and individuals is expected to continue.



WANT TO FIND OUT MORE?

Visit our YouTube Channel and catch up with some of our pilots.



Boiler Building, Vanløse DK

Local people wanted the land to be transformed into green space, but the contamination from its previous industrial use seemed at first to be an unsurmountable problem.

The community and the municipality investigated the possibility of capping the site and covering it with less soil than originally planned. Once it was agreed that this was safe and viable the work went ahead and the area was seeded with a grass and wildflower mix – a great start for 2014.



Smedestræde, Valby DK

A temporary open pavilion is now on site, designed and put together by University of Copenhagen staff. It will be used as a stage, a deck, a house, a library and a meeting room. So far Valby municipality has hosted culture days, an art debate and a dream wall here. Book swap boxes and vegetable beds are planned for 2014, so look out for updates in SEEDS' next newsletter.

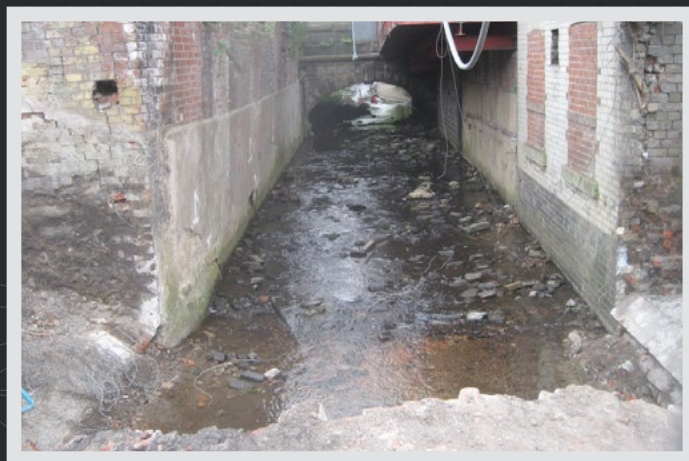
Sheffield Showcase, Sheffield UK

This pilot is about to begin a feasibility study on a Social Landlord project. The project, if it goes ahead, will be based on engaging an organisation

to act as a social landlord that will actively encourage temporary use in and around the current market buildings earmarked for redevelopment. A condition survey is also about to begin which will identify old, recently unoccupied buildings that can host small enterprises, artists and cultural activities.

Porter Brook, Sheffield UK

A tendering process to identify a consultant to carry out a flood study has just begun. More visibly, the long-term plan to uncover the Porter Brook has started with a small section of the tunnel roof removed in co-operation with the new University Technical College. As you can see in the image here, there is still a lot of work to do to improve the river and the surrounding habitat. There is also a small, informal Friends of Porter Brook group now, which hopes to bring the long neglected Brook back to life.





Living with Nature, Sheffield UK

Of its eight sites, two are now complete – Tannery Park and Dyke Vale Road. The designs were agreed in consultation with local communities. Sheffield Wildlife Trust has also hosted a raft of public events, the most inventive of which was 'Crumble Fest'. With support from local business, residents in the area harvested wild apples and blackberries from the site and learnt to make crumble pies. With a liberal helping of custard this went down well, very well indeed!

Dudzeelse Polder, Zeebrugge BE

VLM recently hosted two guided walks on the site as part of an open day held by the harbour authorities that own the land. The walks helped to raise locals' awareness of nature as a temporary use and what it can achieve – particularly important as the site is not public.

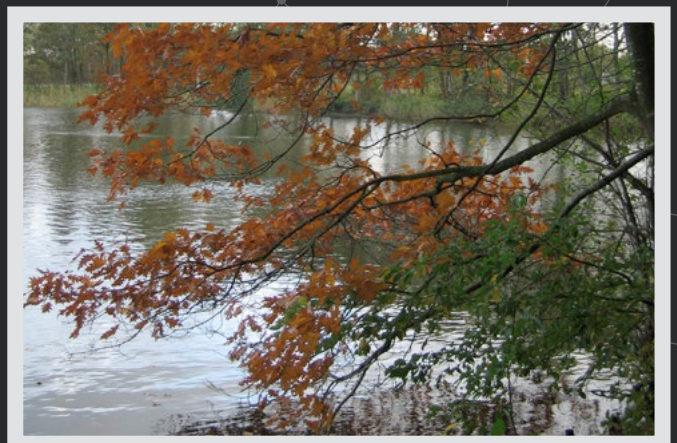
A11, Zeebrugge BE

The road contractor building this new road needs more land than was originally thought, and more temporary space is needed for the farmers as a result. VLM is now working closely with the contractor and the farmers towards a mutually beneficial solution, with a public enquiry to be held very soon. The project will provide VLM with the perfect opportunity to trial new legislation on land banking and land use exchange.



Haarveld Business Park, Noordenveld NL

Noordenveld is a large open space that is part business park, part natural area, which the municipality wants to merge. It plans to create a buzzing melting pot of creative business co-operation and collaboration within the high-tech industry; a visionary aspiration. The first step of building temporary facilities on the site was inspired by a recent visit of SEEDS partners to Het Gasfornhuis in Groningen. Het Gasfornhuis is a local restaurant and meeting space made from shipping containers. You can read about it on our **Re-use Projects** page.



Groningen Sugar Factory, Groningen NL

The Sugar Factory is a beautiful building set within 133ha of open land. Both building and land need to attract more users and business. Recently, it hosted the launch event for the book 'The Flexible City', written by Maarten van Tuijl and Tom Bergevoet. You can read

more about the book on the **Collaborators page** of the newsletter. As a direct result of discussion with other SEEDS partners across the EU, the municipality is now looking at the possibility of increasing public accessibility to the site.



River City Playground, Göteborg SE

After much deliberation, a site has finally been found for the adventure playground. With the help of the local administration, Göteborg Stad will be liaising closely with local young people through a raft of

consultations to build partnerships and plan strategies. Actual construction won't begin for another two years, but the preliminary planning work about to begin will be an exciting start.

RE-USE PROJECTS

We feel it is hugely important to share experience and knowledge. You can read about successfully completed re-use projects on our website.

[PROJECT GALLERY](#)

PROMOTE YOUR PROJECT

Do you have a project you're undertaking?
Would you like to share your experience?

[SUBMIT YOUR PROJECT](#)

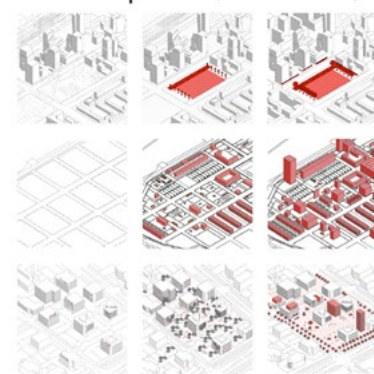
OUR PARTNERS IN CRIME AND OTHER FRIENDLY COLLABORATORS

Temp Architecture, NL

We are very happy to welcome a new collaborator to the SEEDS project: Tom Bergevoet and Maarten van Tuijl, and their organisation **Temp Architecture**. Tom and Maarten published 'The Flexible City', which shows step by step how the challenges of temporary use can be overcome using a range of instruments. They would like to expand their ideas for their new English edition, 'Sustainable Solutions for Flexible City Development', by including projects outside The Netherlands. They are looking for temporary use/re-use projects across the EU that would like to be included as a case study, so if you are a temporary use/re-use project, or you know of one that you think ought to be included, you can contact Maarten directly: info@temparchitecture.com

De flexibele stad Oplossingen voor leegstand en krimp

Tom Bergevoet & Maarten van Tuijl



temp.architectureurbanism

www.temparchitecture.nl

LOD67, DK

LOD67 is a former warehouse and office site owned by the developer Skanska. During the summer of 2013, 35 landscape architecture students spent three months on site exploring how temporary installations can support the transformation from industry to cultural uses and small scale creative startups. They got to know the challenges of working with a network of municipal regulations, private developers and a neighbourhood in flux. The project succeeded in offering an attractive, accessible, human-scale outdoor installation providing play and relaxation activities which will help inspire LOD67 during the development of the site.



Meanwhile Space and Unlimited Meanwhile, UK

Meanwhile Space is a Community Interest Company that works with landlords, landowners, developers, local authorities and communities to advise and deliver projects that relieve them temporarily of liabilities associated with holding redundant shops, offices and cleared land whilst an appropriate commercial solution is being sought. To learn more, visit their **website**.

Unlimited Meanwhile is a sister organisation that works outside London and the UK, spreading the Meanwhile ethos through bespoke consultancy and workshops that better enable stakeholders to deliver temporary use/re-use projects. To learn more, visit their **website**.

www.meanwhilespace.com

www.unlimitedmeanwhile.com



GET IN TOUCH



Our Partners

Lead partner: South Yorkshire Forest Partnership UK

Sheffield City Council

E: team@syforest.co.uk

T: +44 (0)114 257 1199

Project Manager: Sara Parratt-Halbert

South Yorkshire Forest Partnership UK

E: sara.parratt-halbert@syforest.co.uk

T: +44 (0)114 257 1199

Gerda Roeleveld

Deltares NL

E: Gerda.Roeleveld@Deltares.nl

T: +31 (0)61 246 9376

Hero Havenga de Poel

Regio Groningen Assen NL

E: havenga@regiogroningenassen.nl

T: +31 (0)50 316 4289

Emma Johansson

Goeteborg Stad SE

E: emma.johansson@ponf.goteborg.se

T: +46 (0)31 365 58 22

Ulrich Schenck

Lawaetz Foundation DE

E: schenck@lawaetz.de

T: +49 (0)40 3999 360

Bettina Lamm

University of Copenhagen DK

E: bela@life.ku.dk

T: +45 (0)3533 1796

John Henneberry

University of Sheffield UK

E: j.henneberry@sheffield.ac.uk

T: +44 (0)114 222 6911

Sabine Gheysen

VLM BE

E: sabine.gheysen@vlm.be

T: +32 (0)50 45 81 27

Our Sub-Partners

Sheffield Wildlife Trust UK

Rotherham Metropolitan Borough Council UK

Bispebjerg Lokaludvalg DK

Vanløse Lokaludvalg DK

Områdefornyelsen i St Kjelds Kvarter DK

Miljøpunkt Valby DK

Gemeente Leek NL

Gemeente Noordenveld NL

Gemeente Assen NL

Gemeente Groningen NL

Fastighetsagare i Gamlestaden SE

HafenCity University DE

Our Collaborators

Furnace Park UK

D.efac.to NL

Unlimited Meanwhile UK

Meanwhile Space UK

Temp Architecture NL

Funders



Lead Partners



Partners

