



Hamburg Partner Meeting June 2013

Pilot Reporting



Simon Ogden
Head of City Regeneration

Pilot: Sheffield Porter Brook Strategy



Sheffield Waterways Strategy



- People
- Economy
- Climate
- Promotion
- Heritage
- Access
- Stewardship
- Natural Environment

City Centre Master Plan

CITY CENTRE BREATHING SPACES Interim Planning Guidance (IPG)

- 1 Devonshire Quarter Green Spaces (completed)
- 2 Edward Street Park
- 3 Sheaf Valley Park Phase 1 (completed)
- 4 Wicker Riverside Park
- 5 C.I.Q. 'Hubs Square'
- 6 Castle Ruins Park
- 7 Exchange Place/Victoria Square
- 8 Porter Brook Improvements
- 9 Steel Route Moorfoot - Castlegate
- 10 West Bar/Crown Court Square
- 11 Paradise Square Cathedral Quarter
- 12 Kelham Goyt/Upper Don Walk
- 13 St Vincents Park
- 14 Montgomery Fountain/Setts Car Park
- 15 Fitzalan Square
- 16 Hartshead Square
- 17 Sheaf Valley Park Phase 2

1-4 - Current/Recently Completed Schemes

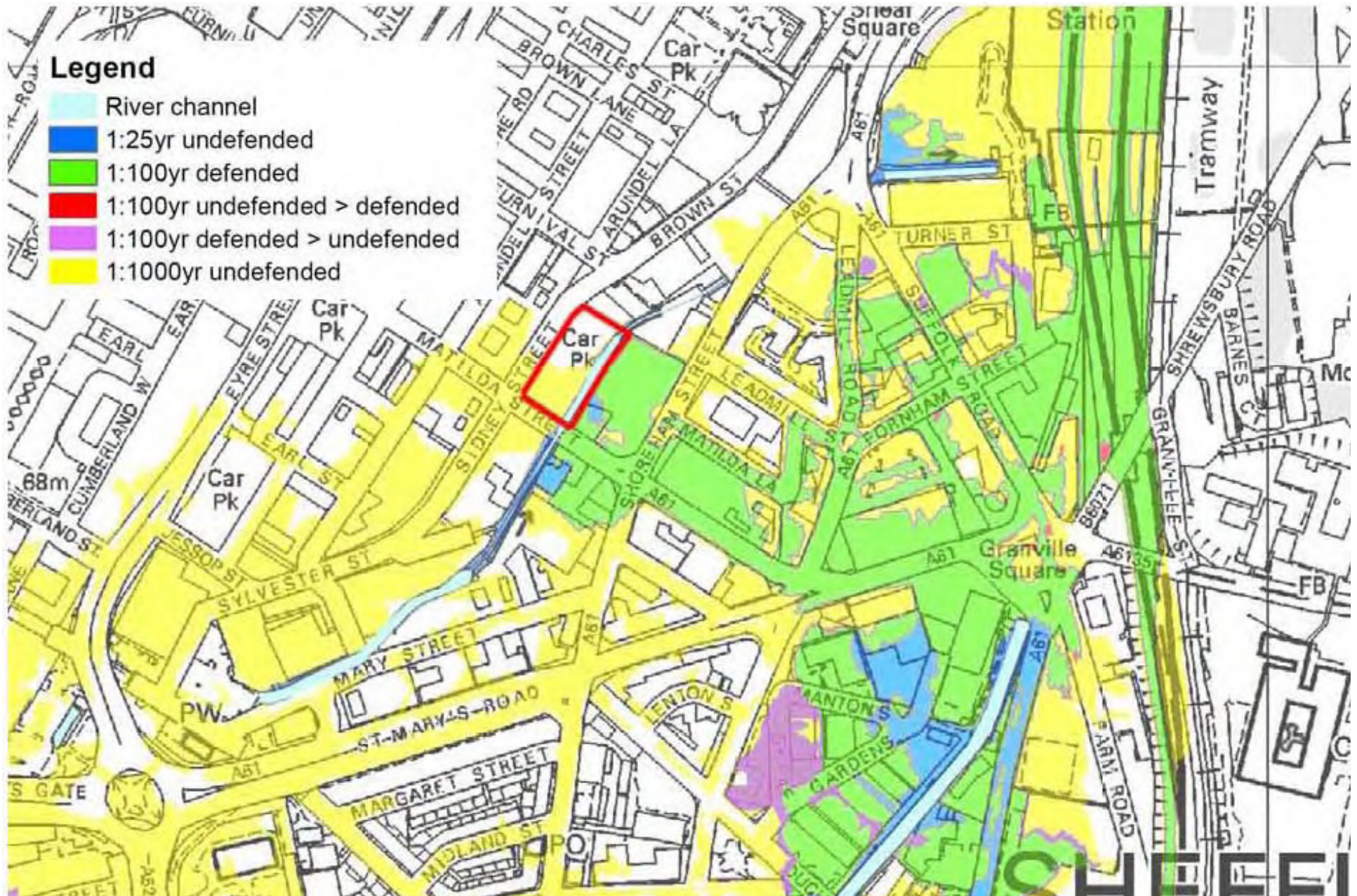
5-17 - Possible Future Projects

-  New/Improved City Parks & Green Spaces
-  Proposed New/Improved Hard Open Space
-  Existing New/Improved Hard Open Space
-  Pedestrian Links between City Parks

APPENDIX C
Draft August 2011



Flood Risk



Floods 2007





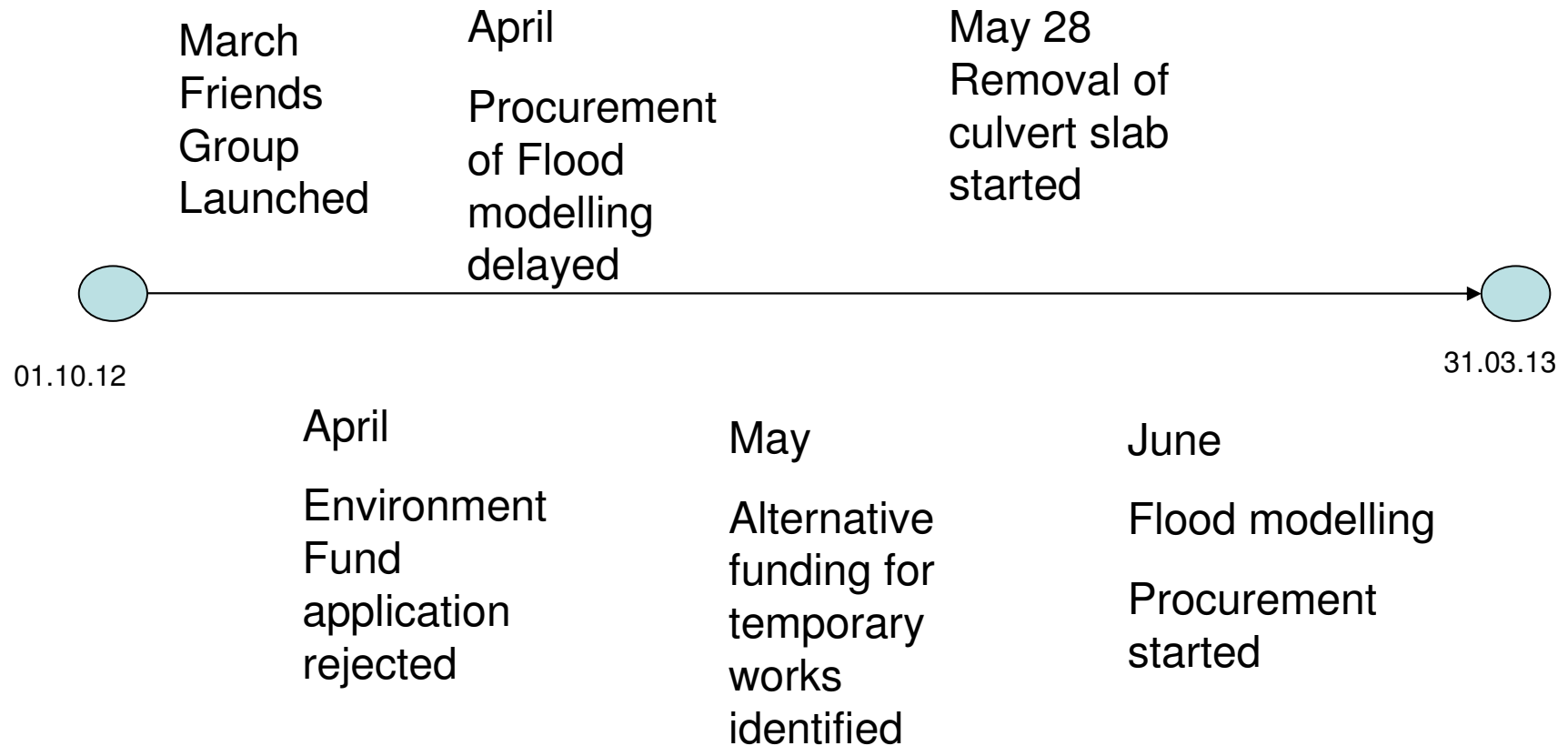
Culvert



Project Site

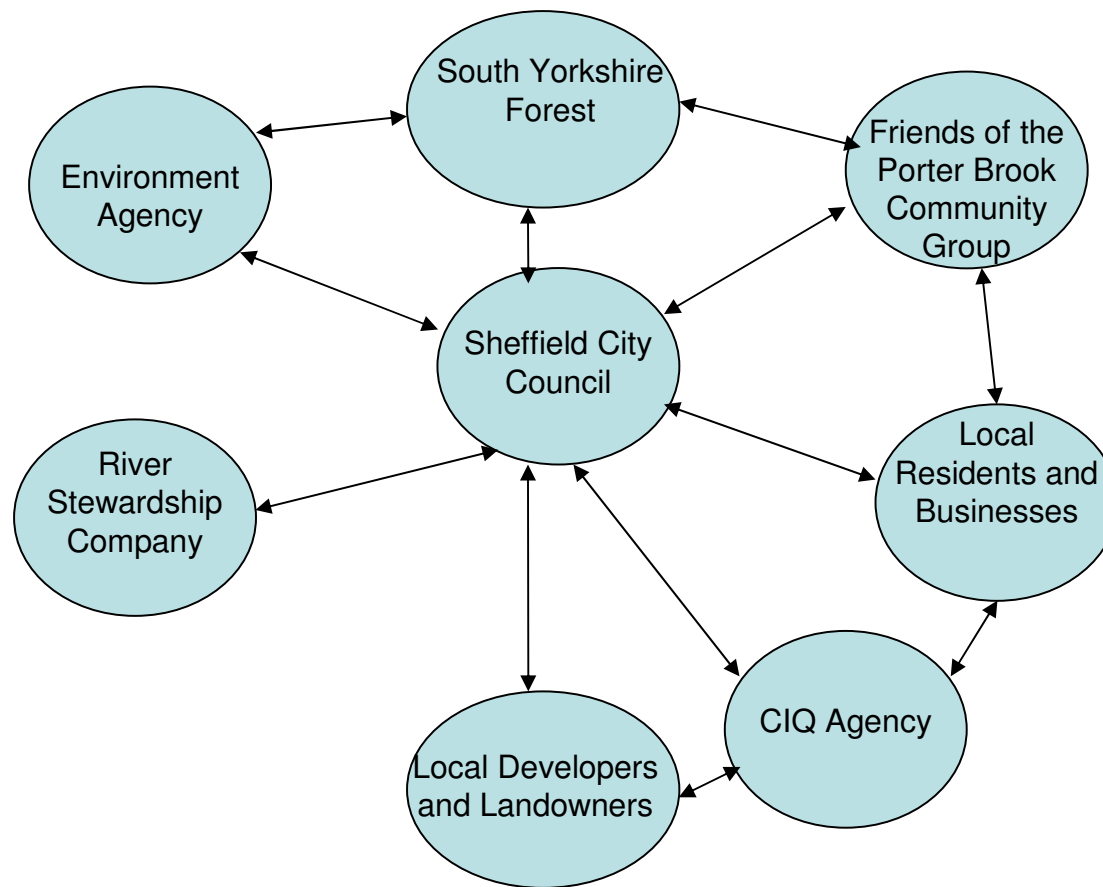


Timeline



People and Partnerships

Stakeholder Network



Engagement:

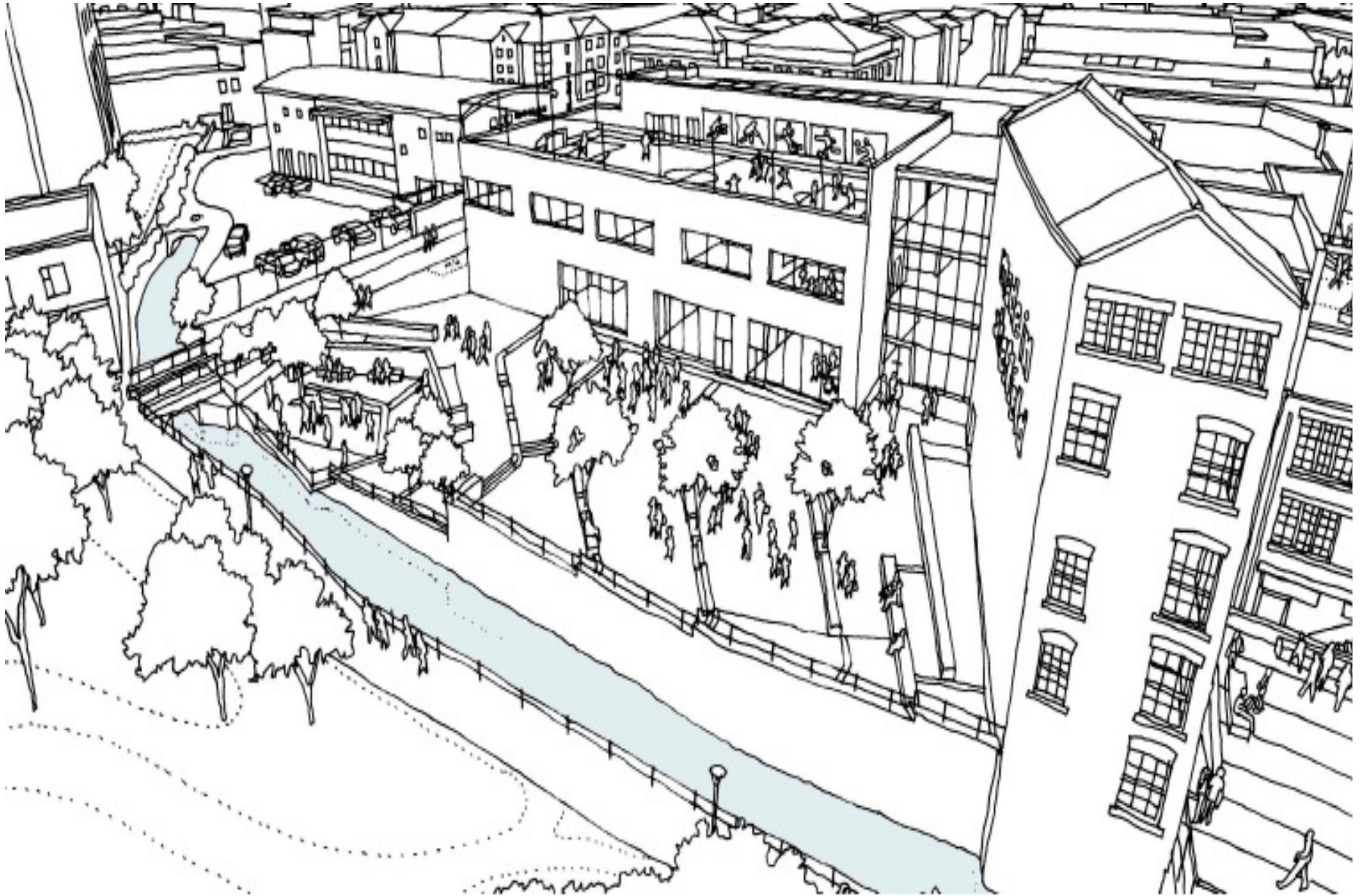
- Building Friends Group – walks, website, temporary park designs, historical research, seeking new members
- Working with landowners and developers to improve riverside elements of their schemes
- Consultation on City Centre Master Plan

Policy:

It was planned to use the Environment Agency's (EA) procurement process. However, the EA is currently in the process of changing its local frameworks, so in a state of change. Now procuring through Yorkshire Local Authority Framework.

Finding correct procurement route has been very difficult and slow.
Too many conflicting regulations – EU, EA, Council

New Technical College



Practice

On-site progress:

- Culvert to be removed

Pilot development:

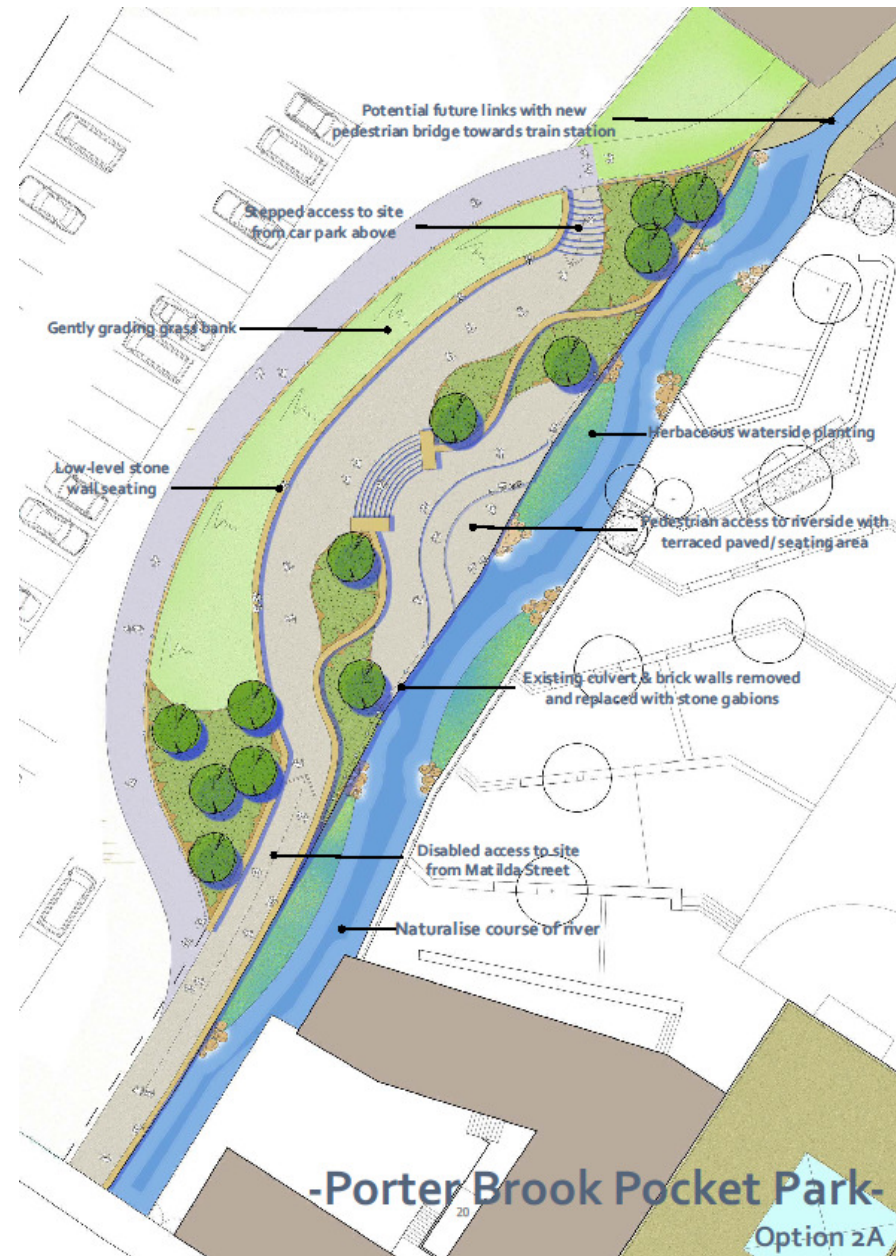
- Outline design and costings completed





Temporary Park

- Demonstration
- Public access
- Naturalised
- Managed



Nursery St Park



Finance

- £50k Flood Model EA
- £15k Initial design EA
- £200k Construction
- £50k Intereg
- £200k College



**How have you involved
your SEEDS partners?**

**Information-sharing
through normal reporting
procedures.**

**What support, help or
information do you need
from your SEEDS
partners? **Inspiration!****



Station Section Development Sketch



Lessons Learnt:

Funding Strategy must be flexible

Evaluation:

No evaluation has taken place as the project is in its pre-brief stage.



Communications

- Press articles
- Radio interview
- Walks
- Formal Launch of Friends
- Film showing
- Stewardship activities





What Happens Next:

1. Procurement of the Flooding Study and appointment of a Hydrological Consultant.
2. Finalisation of temporary park design
3. Secure new funding package







