



# Hamburg Partner Meeting June 2013

Dudzeelse Polder –  
Port of Zeebrugge  
(Flanders – Belgium)  
February 2013 –  
June 2013





Spontaneous development of European protected habitats  
and populations of protected birds (birds and habitats directive)

In an area with a legal destination for harbour development



Implementation of article 6 of habitats directive – compensation programme





Temporary nature



Permanent use for harbour activities, from 2030 on?



# Process





## Aim:

The monitoring of the management of the habitat development and implementation of suitable management measures, as part of the compensatory measures for the economic development of other parts of the harbour of Zeebrugge



## Goals:

***Temporary activities = temporary nature***

***Long term activities = harbour activities***



# People and Partnerships



# Stakeholder Network: placekeeping phase

Technical Committee: (installed january 2011)

-Flemish Port Administration (aMT): president

-VLM: secretary

-Members:

- Flemish administration for nature (ANB),
- Nature organisation ngo (Natuurpunt)
- Port authorities (MBZ)
- Board water management (Oostkustpolder)

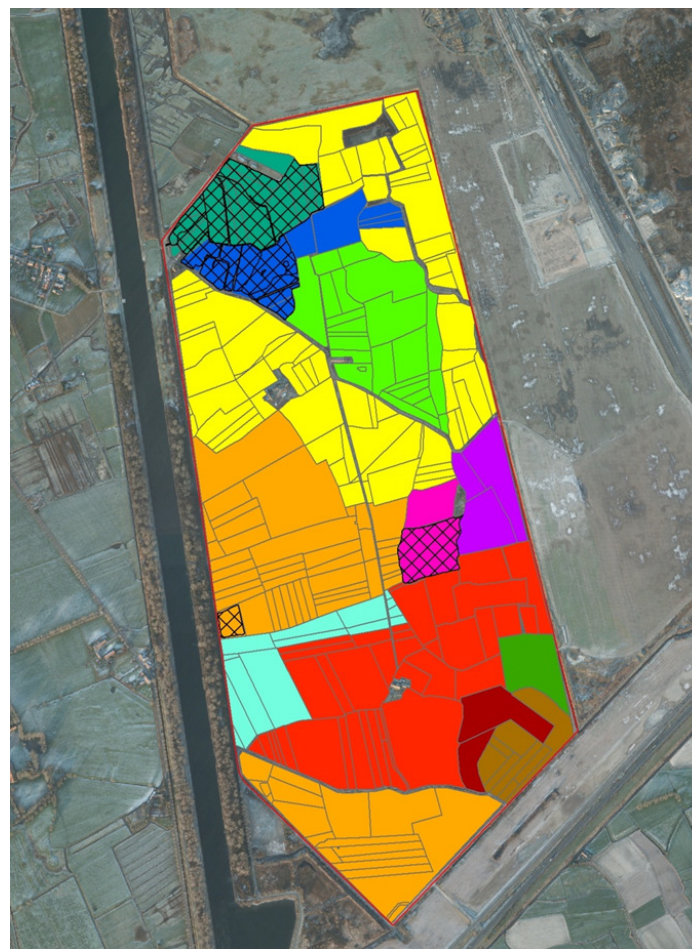
Engagement:

Farmers, who are doing the place keeping, have a contract with the harbour authorities



## Engagement:

- The committee meets at least twice a year to evaluate and discuss the management
- Co-operation with the farmers on a personal basis







# Paradigms and Policy



## Policy:

- No legislative barriers or challenges:

The project got initiated by the implementation of an agreement (2005) between:

Flemish Government,  
port authorities (MBZ)  
Flemish Land Agency (VLM).

effectuation of the habitat development on site in the period 2010 – 2011. The management committee is installed since January 2011.





# Finance



## Finance:

Initial funding stated in the agreement with Flemish government: habitat development

No additional funding for management:

further investments needed: management committee

**We do still need to find a partner for the investments on site. (management is going fine so no need for immediate investments? No use for additional investments at this moment)**





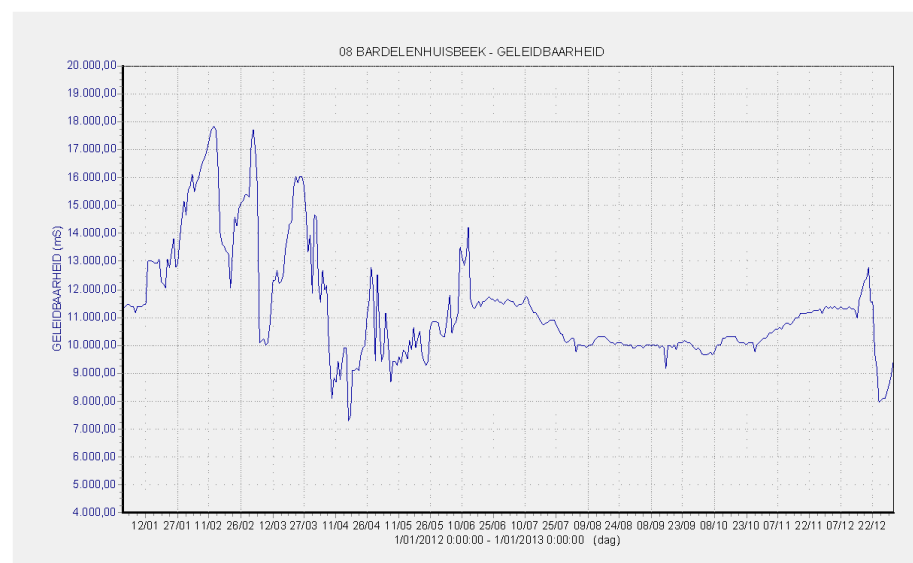
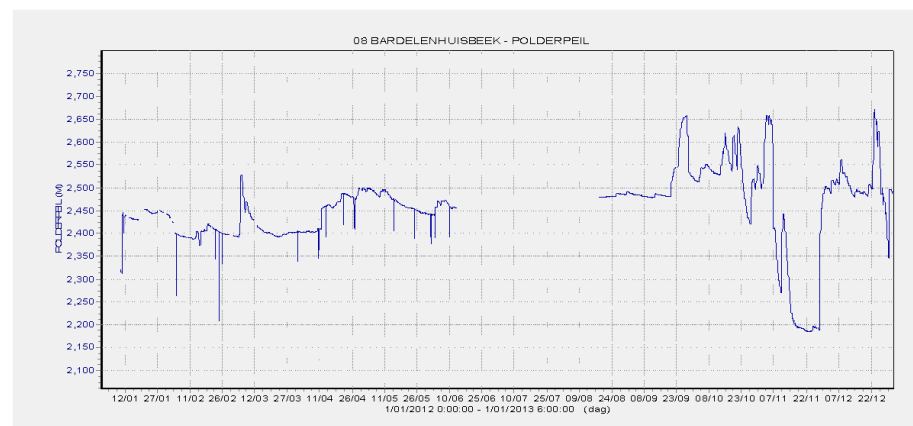
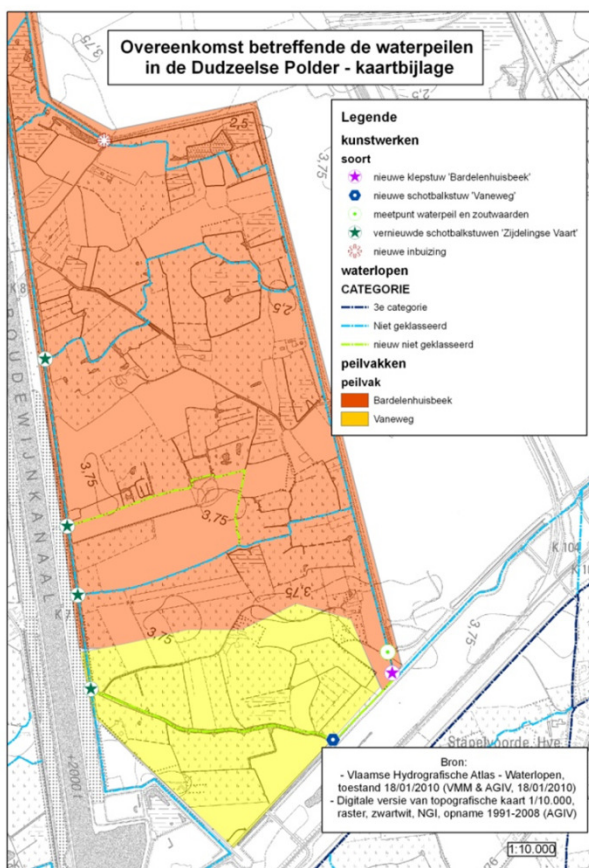
**European Union**  
European Regional Development Fund

**The Interreg IVB  
North Sea Region  
Programme**

*Investing in the future by working together  
for a sustainable and competitive region*



# Practice





# Practice:

## On-the-ground progress:

- place keeping – monitoring of the site

- .

## Pilot development:

- 12 farmers using the land with restrictions

- Water levels are monitored during winter period

## Future plans:

- Until the harbour authorities claim this land, the management committee gathers twice a year to evaluate, discuss and if necessary to alter the place keeping





How was this situation prevented from happening?



## Practice:

## Lessons:

In November 2012, immediate action was needed because the premises of the farmers were threatened due to flooding. A plan of action was easily agreed upon. This was an example for a successful implementation of the water management protocol.

Good communication and cooperation between partners makes taking action easier!



# Communication



## **What steps have you taken to publicise your pilot?**

No actions so far.

## **Has your project encouraged a general discussion among colleagues, or the public?**

The discussions have taken place in the place making phase of the project, that's before the SEEDS project started. Now we are in the place keeping phase, we haven't encountered discussions yet and we don't expect them so much as well.



**How have you involved your SEEDS partners?** no

**What support, help or information do you need from your SEEDS partners?**

Our challenge in this pilot is to deal with **conflicting interests** between management **of the area as part of natura 2000 and future use for harbour purposes.**

The management in order to attain favourable state of conservation conflicts with the following: the less (more) favourable state of conservation, the less (more) the compensatory load in the future.

.





## Lessons Learnt:

The evaluation of the thistle problem in 2012 resulted in an action plan for 2013



## Evaluation:

The evaluation of the management takes place in the management committee (min twice a year)

.



# The Next Claim



## What Happens Next:

1. Implementing the management action plan, agreed upon in the management committee March 2013.
2. Keep the farmers motivated in executing the management of the area.