



# HyTrEc

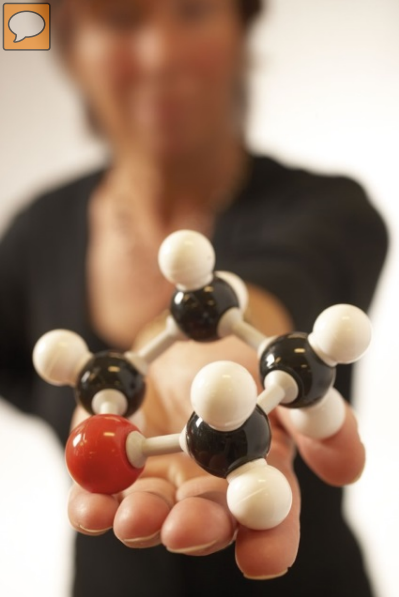
Hydrogen Transport Economy  
for the North Sea Region

# HYDROGEN EDUCATION – PRODUCTION LEVEL 1

2015

The Interreg IVB  
North Sea Region  
Programme

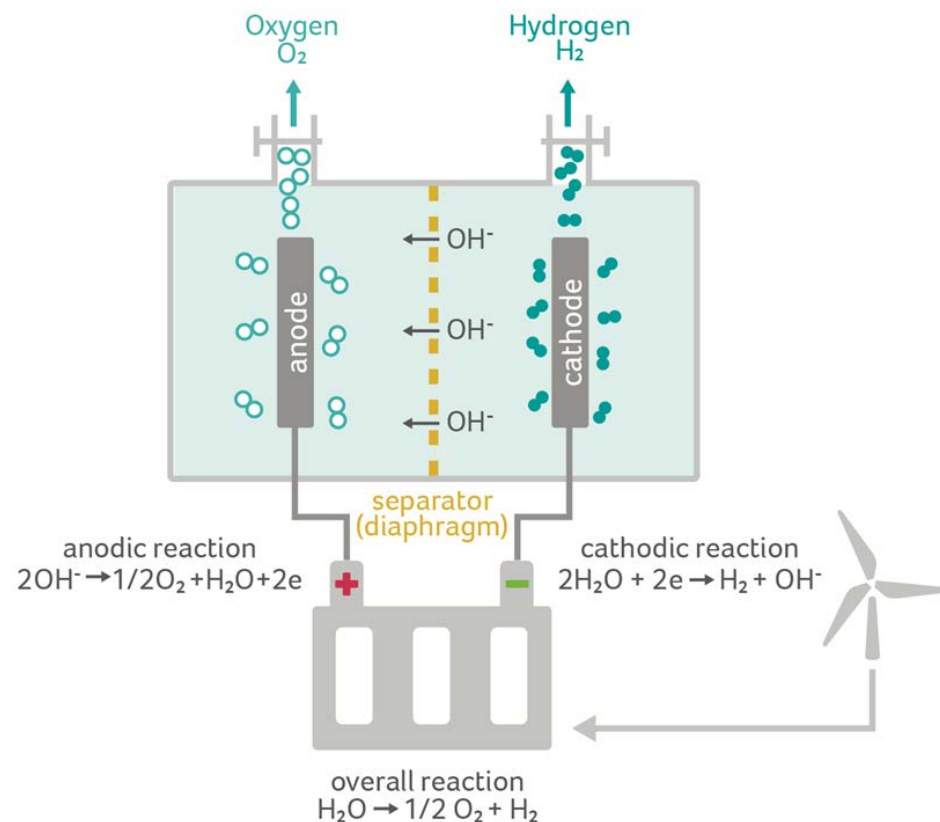




## COMMON PRODUCTION

- Steam reforming of natural gas
- Electrolysis of water

# RENEWABLE HYDROGEN - ELECTROLYSIS





# RENEWABLE HYDROGEN - REFORMED BIOGAS

# HyTrEc

Hydrogen Transport Economy  
for the North Sea Region



The Interreg IVB  
North Sea Region  
Programme



working to the future by working together  
for a sustainable and competitive region



EUROPEAN REGIONAL  
DEVELOPMENT FUND



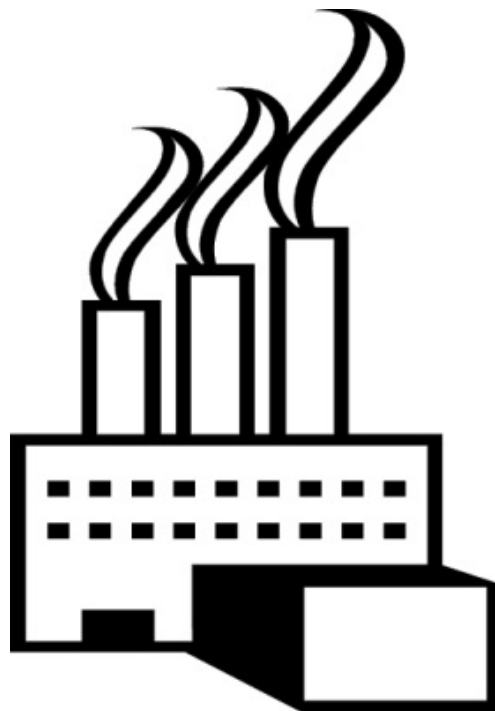
ABERDEEN  
CITY COUNCIL



# RENEWABLE HYDROGEN - LEFT-OVER HYDROGEN\*

# HyTrEc

Hydrogen Transport Economy  
for the North Sea Region



The Interreg IVB  
North Sea Region  
Programme



Investing in the future by working together  
for a sustainable and competitive region



EUROPEAN REGIONAL  
DEVELOPMENT FUND



ABERDEEN  
CITY COUNCIL



# CARBON CAPTURE STORAGE (CCS) ...A FUTURE POSSIBILITY?

**HyTrEc**

Hydrogen Transport Economy  
for the North Sea Region

- Reformed natural gas + CCS = CO<sub>2</sub>-neutral system
- Reformed biogas + CCS = CO<sub>2</sub>-reducing system



The Interreg IVB  
North Sea Region  
Programme





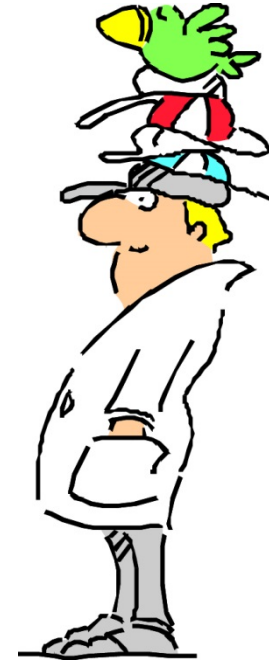


# PRODUCTION OF HYDROGEN – SEVERAL DIFFERENT POSSIBILITIES

**HyTrEc**

Hydrogen Transport Economy  
for the North Sea Region

- Thermolysis from water
- Photocatalytic water splitting
- Photobiological water splitting
- Biohydrogen production from water
- Other production from fossil fuels gasification





# GAS PURITY AND QUALITY

# HyTrEc

Hydrogen Transport Economy  
for the North Sea Region



The Interreg IVB  
North Sea Region  
Programme



Investing in the future by working together  
for a sustainable and competitive region



EUROPEAN REGIONAL  
DEVELOPMENT FUND



**ABERDEEN**  
CITY COUNCIL



## PRICE

1€/10 km

# HyTrEc

Hydrogen Transport Economy  
for the North Sea Region



The Interreg IVB  
North Sea Region  
Programme

