

The GSA Final Seminar – an uplifting event

www.greenairports.eu

In the idyllic setting of Zeegse in Drenthe (NL), the GSA partnership presented the project's final results during the last transnational seminar on 13th November. The set up of the day's programme, combined with the professional, humorous style of our chairman Harm Edens, resulted in an informal atmosphere which allowed for intensive audience participation and open discussions on all topics passing the revue.

Following an 'energizing' opening the participants – a wide range of experts from the aviation sector – listened to enlightening presentations. Léa Bodossian, Secretary General of Airport Regions Conference (ARC) had a double bill. Firstly she presented the role of ARC in European aviation and later she shared the goals and achievements of D-Air, an Interreg IVC project dealing with the improvement of surface accessibility to airports and the CO₂ neutrality of airport operator activities. The project pays special attention to the optimal involvement of business R&D communities in creating well connected green airports.

GSA partners and associates then presented their results and findings on sustainable runway development, LED lighting on runways and taxiways, and noise reduction in the vicinity of airports. Robbert Naus of Dura Vermeer BV shared the latest innovations in runways while Hans van der Kuil, TKH Group, shed his light on the latest technology for runway LED using induction. All speakers underwent the unabated curiosity of the Chairman.

During the afternoon session, which opened with an audience-engaging 'Spot the odd one out' quiz, representatives from

all regional airports participating in the GSA project shared their knowledge and experiences in an open panel discussion on Sustainable Airport Solutions (Cooling and heating of aircraft, Willow Energy, CO₂ reduction strategy, CO₂ management toolkit and Environmental friendly de-icing). The final topic on the programme took place in the form of a public interview with those partners dealing with Sustainable Accessibility Concepts (Public transport strategies and business cases, Integrated ticketing and Real Time Information Systems).

In conclusion it can be said that a great deal has been achieved during the course of the Green Sustainable Airports project – and there is an eagerness to prolong the GSA network in the future. Transnational cooperation has many benefits; it's hard work but working together on sustainable airport solutions has also been 'uplifting'!

Deirdre Buist, Provincie Drenthe
d.buist@drenthe.nl



Green building solutions for Kortrijk-Wevelgem Airport

On the 6th of January 2014 the Board of Directors of Kortrijk-Wevelgem International Airport were officially handed over the 144-page study 'Sustainable Building and Renovation of Small and Mid-size Regional Airports'. The study was carried out by Enviro Plus, a company with as motto 'ambitious to meet your expectations'.

In July 2013, the Flemish government approved an investment programme, together with the Province of Western Flanders. This is linked to a new organizational structure dominated by the Province of Western Flanders and with the Flemish government as a new shareholder.

The investments will be used mainly to replace the actual taxiways and apron and to build new headquarters for the 16 staff members and vehicles of the airport fire brigade and inspection team. There is also an option to construct a new tower on top of this new building.

The specifications for the Infrastructure Renovation Programme is still under construction, with increasingly more detail since 2008. Thanks to the scientifically documented results and recommendations of the Enviro Plus

study the specifications document is now being transformed into a greener version using a sustainable approach.

Of course we must respect the budget, but the study (dedicated to the spirit of the project) has already taken this into account by providing smart and simple, feasible solutions for 'big' problems and challenges.

We hope to welcome our GSA partners – and many others – to a new, green, sustainable, energy-saving and environment-friendly business airport in 2016-2018. Meanwhile we hope that the partners can learn from our results and we would be very pleased to hear if the study has been of value to them!

Stefaan Van Eeckhoutte, Kortrijk-Wevelgem International Airport
airport.kortrijk.directeur@skynet.be

GSA mag. Making Airports Greener

To coincide with the Final Seminar a magazine has been produced to showcase and promote the achievements of the GSA partnership during the project period.



The GSA mag. is full of information about the context of GSA, the InterregIWB programme and the participating organizations in the North Sea Region. An accessible read, here you can find out more about the challenges, aims and goals involved in the search for sustainable airport solutions and sustainable public transport concepts in relation to airports. Informative articles can also be found on connecting with other international organizations in the aviation sector and the partners' presentation of policy recommendations to DG Move and EASA.

Moreover, the partners reveal how they found working together in this transnational cooperation. Pooling knowledge, sharing information and experiences and facing challenges together has also stimulated future endeavours – 'to boldly go where no man has gone before!' was a much recognized quote during the final seminar.

You can download the GSA mag. from the website or e-mail d.buist@drenthe.nl.





Big news for Billund

Read all about it! GSA's Danish partners, Billund Airport, have had some pretty exciting news recently.

The Danish Government, together with the Danish People's Party and the Alliance have recently agreed on a modernisation of the national railway and have just implemented the Train Foundation DK. This agreement sets aside 28.5 billion DKK (3.82 billion Euros) towards an historic boost of the Danish railway system.

The Parties have agreed to establish a rail link between Vejle and Billund, involving an allocated investment of 750 million DKK (100 million Euros) to the project. The railway will have stations at Billund Airport and near Legoland.

The Ministry of Transport will have further discussions with local partners in order to find alternative routes, including light rail. The paper is to be discussed by the involved parties in April 2014.

A new raillink to Billund Airport offers an enormous potential for the airport, contributing further to its environmental goals and the impact of the CO₂ in the area. Today only 3 or 4% of passengers arrive at the airport by public transport. The raillink will undoubtedly increase this amount – to the benefit of the environment.

Jette Gelsbjerg, Billund Airport
jgl@bll.dk





Green Light – it's all go at London Southend Airport

As the GSA project draws to a close Southend Airport is looking for opportunities to put into practice the learnings from the GSA partners over the last 3 years.

The use of LED lighting is spreading across the airport. As well as installing LED lighting on the taxiways, options are being considered for incorporating LED into the approach lighting system; the main benefit being less maintenance, especially as the lights in question are located off airfield. In the terminal extension LED lighting has also been introduced – this has resulted in a reduction not only of energy consumption but also of maintenance costs.

The terminal extension project is due to be completed in early 2014 and will benefit from LED lighting, solar panels and air source heat pumps. The new building has a requirement for 10% of the energy to be from renewable sources. We are exploring locations and options for installing an electric charging post to support and encourage customers with electric vehicles. The terminal extension also has many green features including rain water harvesting, use of grey water and solar shading on the external glazing.

Work continues to encourage staff to consider the way they get to work, promoting car sharing and other options available and adding car share bays in the staff car park. Work is also being done to encourage passengers to use public transport – especially the on-site railway station. We

are exploring the option of installing ticket machines in Baggage Reclaim.

Progress continues on the de-icing strategy, whilst the airport works with regulatory bodies to look at options, practices, knowledge and experiences shared by our GSA partner at Sandefjord, other partner airports and guest speakers at the various seminars. All information exchanged will be considered prior to a final solution being implemented.

London Southend Airport is still in an exciting phase of growth with a number of projects underway. In 2013, it was named best airport in Britain in the Which? airport passenger survey and enjoyed its busiest year ever with 970,167 passengers passing through – beating the previous record of 721,661 (set year to the end of February 2013). This sustained growth eclipses previous yearly averages of around 692,000 passengers back in the 1960's heyday of London Southend, when it was the third busiest airport in the UK (second only to Heathrow and Manchester). As the airport continues to grow the wealth of experience and knowledge gained as a partner in the Green Sustainable Airport project will be invaluable.

Sam Petrie, London Southend Airport
sam.petrie@southendairport.com



Kent's International Airport has new owners!

Lothian Shelf Ltd, wholly owned by Ann Gloag, co-founder of the Stagecoach group, completed the purchase of Manston Airport from New Zealand company Infratil in late November 2013.

Ms Gloag has appointed former London Southend Airport Managing Director Alastair Welch to lead on turning around the airport, working alongside the existing Chief Executive Charles Buchanan.

Kent County Council is delighted that the airport has ambitious new owners; and will help facilitate the new owners in creating new and exciting opportunities at the airport.

The GSA project has facilitated the completion of the business case for a new Thanet Parkway railway station that would serve the airport. The next phase of work involves developing a detailed design and planning application for the new station.

Manston Airport is currently served by a double daily KLM City Hopper service to Amsterdam Schiphol.

Joseph Ratcliffe, Kent County Council
j.ratcliffe@kent.gov.uk



Reports per theme now available

Cooperation in the GSA project has resulted in even more than we initially thought possible. The ambitions of participating airports and their regional organizations have been heightened. Detailed reports have now been published per theme and are available on request to d.buist@drenthe.nl or can be downloaded from the GSA website under the DOWNLOADS section on the homepage. Here you can also find a compact overview of activities per partner in the GSA Catalogue.

Whilst developing some of the tools we were supported by a number of important knowledge institutes in the UK, the Netherlands and Norway and an enthusiastic collection of specialist consultants from partner countries.



- GSA Catalogue

Sustainable Airport Solutions

- Continuous Descent Approach
- Noise Abatement – a GSA baseline study
- Noise Abatement Measures – an assessment study at GSA airports
- The Economic Impacts of Regional Airports – a GSA case study
- Winter Management Toolkit
- Aeronautical Ground Lighting – Evaluating the Business Case for LEDs

Sustainable Accessibility Concepts

- Public Transport Accessibility to Regional Airports – Executive summary
- Study on Innovative Bus Services to Regional Airports – Executive Summary
- Pre-investment Study on Rail Access to Airports – Thanet Parkway Business Case



'Lights, Camera and Action!'

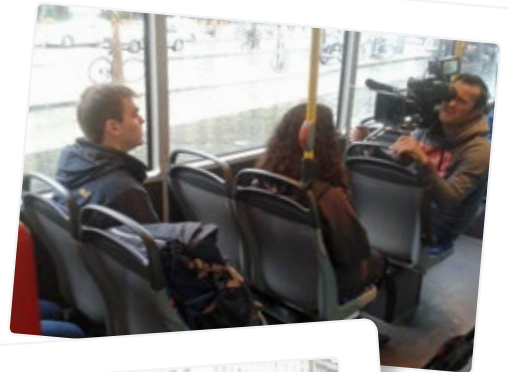
– The Making of the GSA Film in Bremen

Who would have thought that organising filming permits, writing scripts and learning lines is all in a day's work for a transportation planner? It is when one is a transportation planner participating in an Interreg project! In November 2013, representatives from the City of Bremen's Transportation Ministry, the Senator für Umwelt, Bau und Verkehr (SUBV), and the regional public transit organisation, the Zweckverband Verkehrsverbund Bremen/Niedersachsen (ZVBV) and the Verkehrsverbund Bremen/Niedersachsen (VBN), had the opportunity to work together with the film makers from Moomba!Media in order to highlight some of the activities in Bremen being carried out in the context of the Green Sustainable Airports Project.

The film shoot began at Bremen Airport, where introductions were made, details for the rest of the meticulously scheduled day were discussed and weather reports checked. We departed from the airport to the train station on a bus that had been provided by the local transit organisation, the Bremer Straßenbahn AG (BSAG), to film a few scenes at the largest local transit hub and the dynamic passenger information signs that are an integral part in routing and informing passengers in Bremen.

By noon, Bremen was beginning to show itself from its most authentic side – grey and rainy! And although the filming fellowship was in need of a lunch break, the rain was not. The afternoon's filming session was spent skirting around Bremen's inner city and notable sights, clutching expensive camera equipment under one's arms and shielding the rest with umbrellas. However, the damp weather didn't dampen the group's spirits and we arrived at the airport in need of towels and a change of clothes but in a jolly mood. The only bit left to film was the check-in and departure scene and the interview at the airport.

Aside from being able to present the project's achievements on film, the filming experience was incredibly rewarding because



Photos copyright
Verkehrsverbund
Bremen/Niedersachsen

it offered us a brief view into an entirely different profession, a behind the scenes look at the work that goes into making a 3-minute segment of film. This involved writing and fine-tuning scripts, planning schedules and timing routes, the acquisition of filming permits (airport, tram and airlines) and memorising lines, not to mention lugging 13+ kg of camera equipment about all day and the cutting and editing work the camera crew did afterwards!

Making the GSA film was a great deal of fun and we look forward to seeing the finished product featuring many of the other GSA partners at the GSA final partner meeting in February.

Rebecca Karbaumer, The Ministry of the Environment, Construction and Transportation, Bremen
Tim Semmelhaack, Zweckverband Verkehrsverbund Bremen/Niedersachsen

The Green Sustainable Airport project was initiated by Groningen Airport Eelde (the Netherlands). The Province of Drenthe is responsible for project management and is acting as Lead Partner in cooperation with Groningen Airport Eelde. There are 17 partners and sub-partners from 6 countries in the North Sea Region. Each partner airport acts as a platform in the region for developing, testing, producing, monitoring and displaying innovative solutions and quick wins. The airports have a role as spindle between regional authorities, knowledge institutes and the business sector.

Visualizing results – the GSA Film

Communication is an important facet in any project and as part of GSA's communication campaign a film was recently produced to inform a broader public about our aims and achievements.

Filming took place on location at Billund Airport, in Bremen City and at Groningen Airport Eelde as well as during the Final Seminar. This easy-to-watch visual record of how our international partnership has worked on establishing strategies and solutions for a more eco-efficient and green aviation sector at regional airports is not only informative but 'the-making-of' was also a great experience and fun for all involved. You can find the GSA project's film on Youtube.



Contact Ben van Os, Project Manager, Provincie Drenthe, b.os@drenthe.nl, +31 (0)592 365665 | Onno de Jong, Groningen Airport Eelde, o.dejong@gae.nl, +31 (0)50 3097006 | Deirdre Buist, Provincie Drenthe, d.buist@drenthe.nl, +31 (0)592 365435

www.greenairports.eu | gsa@drenthe.nl

Partners The Netherlands: Provincie Drenthe, Groningen Airport Eelde NV | Belgium: International Airport Kortrijk-Wellegem | Germany: ZweckverbandVerkehrsverbund Bremen/Niedersachsen, FlughafenBremen GmbH, Der Senatorfür Wirtschaft und Häfen, Der Senatorfür Umwelt, Bau, Verkehr und Europa, VerkehrsverbundBremen/Niedersachsen GmbH, BremerStraßenbahn AG | United Kingdom: London Southend Airport Co. Ltd., Kent County Council, Institute for Sustainability, NPL | Norway: Sandefjord Lufthavn AS, Vestfold County Council | Denmark: Billund Lufthavn A/S, Billund Municipality, Thomas Cook Airlines Scandinavia A/S, Billund Varmeværk Amba