

Dissemination

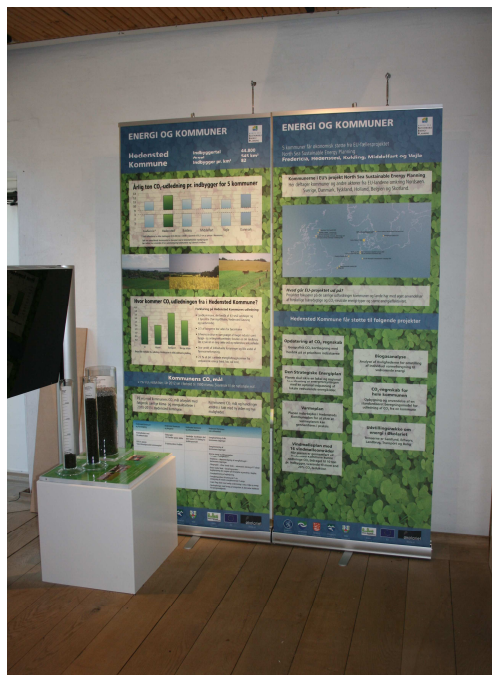
In co-operation with the 4 other municipalities in Denmark and Green Network we have participated on an exhibition in "Økolariet" in Vejle.

There is a permanent introduction to "old" and "new" energy, promoted as video/films, interactivity, graphics and text, and a presentation of the North Sea Sustainable Energy Planning Project.

There are also forthcoming exhibitions with different subjects. The first exhibition (October 1st – November 30th) is called "Energy & Society" and shows the CO₂-emissions and future goals for CO₂-emissions for each municipality. Furthermore the exhibition is showing which project the municipality is working on in the North Sea Sustainable Energy Planning Project. For the opening of the first exhibition each municipality has invited their local politicians.

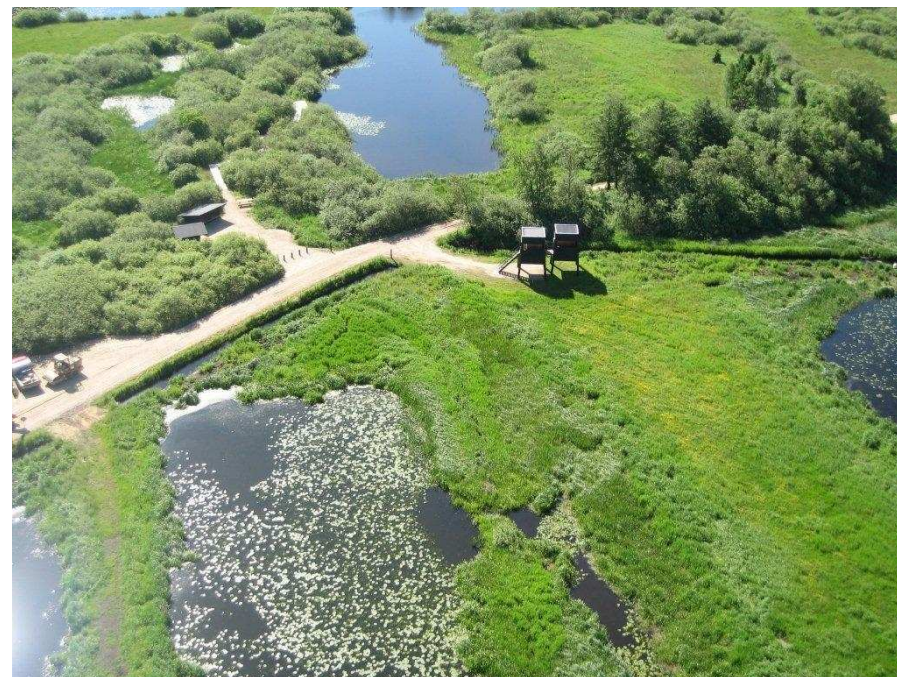
The other forthcoming exhibitions are:

- "Energy & Agriculture"
- "Energy & Industry"
- "Energy & Housing"
- "Energy & Transport"



This picture shows the presentation of Hedensted Municipality in "Økolariet" in Vejle.

Hedensted Municipality North Sea Sustainable Energy Planning



Hedensted Municipality - Denmark Participation in the North Sea Sustainable Energy Planning project

Facts

- 46.000 citizens
- Area: 546 km²

Hedensted Municipality is a rural district. We have a lot of small villages and only three minor cities. This gives us an extra challenge. Only few households are using collective heating supplies, while major parts are using individual heating supplies (oil, gas, wood and straw).



CO₂-baseline

Basis for our work is the CO₂-baseline assessment for the municipality. The CO₂-baseline assessment helps us define our future working tasks.

	CO ₂ -emissions - t/citizen
Electricity	3,3
Heating	2,2
Transport	3,9
Other sources*	2,9
Total	12,3

*Other sources are agriculture, waste and sewage.

To comparison the CO₂-emissions in Denmark is 12,0 t/citizen.

In Hedensted Municipality 22% of our energy is renewable, based on wind, biomass and sun energy.

Present and future task

- CO₂-baseline assessment update.
- Biogas analysis, showing the biogas potential and the biogas use.
- Analysis of collective heating supply.
- Analysis of individual heating supply.
- Strategic Energy Plan. The overall analysis provides the background for a Strategic Energy Plan. The plan will be a guideline how to increase the renewable energy and reduce the CO₂-emissions in Hedensted Municipality, with optimized use of local resources.

Right now we have started our analyses, and by the end of this year our CO₂-baseline assessment is updated, and we will soon be ready to set our future goals regarding optimized use of renewable energy and reduced CO₂-emissions.

We have already made a plan for wind turbines and have also made progress in energy renovating municipal buildings, which also will be implemented in the Strategic Energy Plan.

