



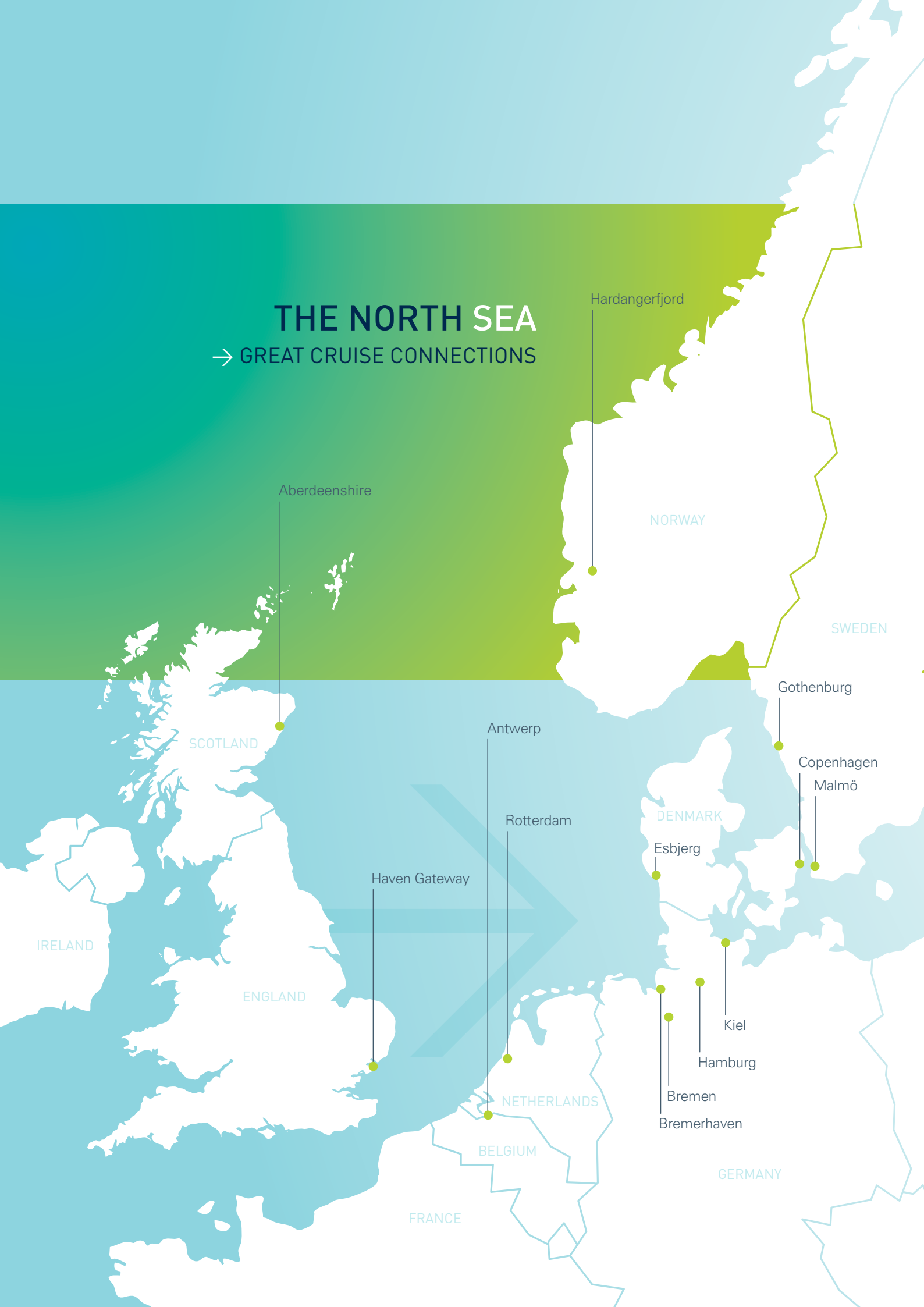
THE NORTH SEA

→ GREAT CRUISE CONNECTIONS



THE NORTH SEA

→ GREAT CRUISE CONNECTIONS



Aberdeenshire

Hardangerfjord

NORWAY

SWEDEN

Gothenburg

Copenhagen

Malmö

DENMARK

Esbjerg

Kiel

Hamburg

Bremen

Bremerhaven

GERMANY

BELGIUM

NETHERLANDS

Rotterdam

Antwerp

Haven Gateway

ENGLAND

IRELAND

SCOTLAND

FRANCE

Sparkling
...and sustainable



Peaceful villages
set in tranquil
countryside
...and cities
buzzing with life



Deep, dramatic
fjords...and
endless sandy
beaches

A dazzling variety of regional dishes
passed down over centuries...and
the best of today's cuisine from
across the globe



Ancient
history...and
21st century
dynamism

Historic castles
...and modern
architecture to
set your head
spinning



A proud
heritage...
and a warm
welcome



A burst
of activity...
or a moment
of calm



The North Sea Region – it's whatever you want it to be!
Environmentally conscious cruise destinations – with the focus
on protecting our heritage for future generations

The North Sea Region dares to be different. It offers an
unbeatable variety and mix of unique cultures, proud traditions and
distinct heritage, all born and nurtured in a region that has taken centre
stage in world history over centuries.

All too often, the North Sea is seen as a 'marginal sea' that connects to the Atlantic Ocean via the English Channel in the south or the Norwegian Sea in the north. It's often better known for its European shipping lanes, for its offshore oil and gas fields or as a 'barrier' between countries.

But we say: take a closer look at the map. The North Sea connects great cities, great nations, great cruise destinations. It offers shorter distances between cruise ports – less time at sea, less fuel consumed, reduced emissions, more time to explore.

The North Sea Region offers quiet and harmonious landscapes, remote beauty spots, cultural cities and towns, traditional buildings and historic sites. It also offers a unique focus on conserving these wonderful assets for future generations.

The major cruise terminals, together with visitor destinations, local councils, service companies and other stakeholders, work together to protect their remarkable locations from the damage that can be caused by too many visitors.

That includes developing 'green' cruise terminals, limiting numbers where appropriate, phasing traffic to avoid congestion, and encouraging 'low carbon' excursions and activities. And it includes working with cruise operators and shore excursion specialists to find the best way to protect our heritage.

Take a look at what's on offer. You'll see the difference!



FOCUS ON SUSTAINABILITY

- An upper limit of 4,000 cruise passengers per day ensures the protection of Hardangerfjord's sensitive environment.
- Cruise Norway's unique 'Cruise Calendar' makes it easy for cruise lines to find out which dates are booked or free.
- Focus on the great outdoors: biking, hiking, kayaking, rafting and more.
- Shore excursions to local fruit farms, supporting farmers in conserving farms and landscapes.

HARDANGERFJORD | Norway

TRANQUIL & RELAXING, BREATHTAKING NATURE

Hardangerfjord

NORWAY

Adventures and freedom amidst fjords, mountains, waterfalls and glaciers: Hardangerfjord is truly unique for its breathtaking scenery, unspoilt nature and the freshest of fresh air.

With five small and personal ports handling cruise calls in the fjord, traffic is spread out, thus avoiding congestion at visitor attractions and cultural heritage sites.

The slogan 'Fruitful Hardanger' tells two stories:

- This is the orchard of Norway, where 80% of the country's sweet cherries, plums, apples and pears are grown and spring blossom is unforgettable.
- Visits to the area are fruitful and valuable. Hardangerfjord has been described as harmonious, relaxed and one of the natural wonders of the world.

Visitors are drawn to its natural beauty – Hardangerfjord is Norway's second longest fjord and offers three national parks, two glaciers and numerous waterfalls.

TOP ATTRACTIONS:

- The Vøringfossen waterfall
- Hardangervidda Nature Centre
- Cultural heritage – traditional music, national costume
- The Hardanger Embroidery
- Outdoor excitement – waterfall jumping, climbing, rafting, glacier trips

JUST A LITTLE BIT DIFFERENT

Taste of Hardangerfjord: join a fjord cruise to Ulvik, visit Hardanger Juice & Cider Factory, watch a local chef demonstrate local dishes, enjoy a demonstration of juice, cider and brandy production, then sit down to a sumptuous meal – and drinks!

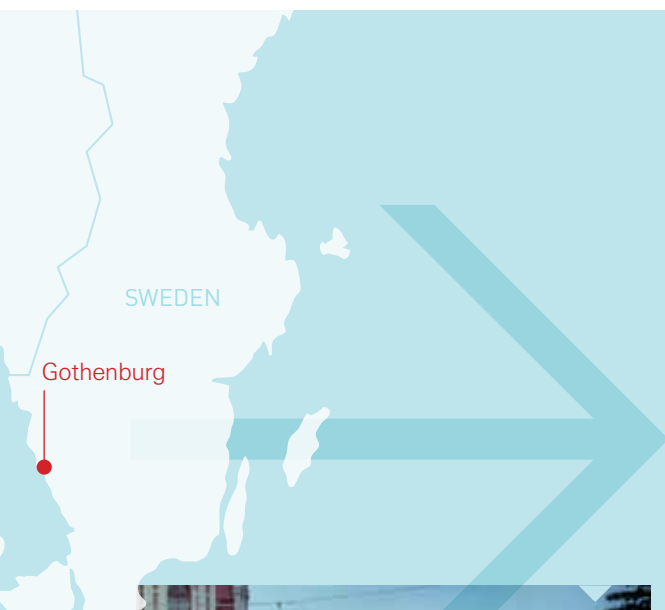
WWW.CRUISEHARDANGERFJORD.COM





FOCUS ON SUSTAINABILITY

- The Port of Gothenburg is recognised for its wide-ranging efforts to be 'green', including offering reduced tariffs for ships using low-sulphur fuel.
- Gothenburg was way ahead of the game when it first offered high-voltage shoreside power, enabling ships to turn off their engines while berthed.



GOTHENBURG | Sweden THE FRIENDLY CITY BY THE SEA

Charmingly different, Gothenburg offers a relaxed, welcoming atmosphere; it's easy to meet people and pretty much everyone speaks English. Parks, shopping, culture, art and more are all within walking distance of the port.

Everywhere in Gothenburg, the sea is in the air. Enjoy waterfront restaurants, watch the busy ferry Ävsnabben criss-crossing the lively harbour or take a boat trip to the beautiful Southern Archipelago. Try the fresh fish and seafood – Gothenburg was named Food Capital of Sweden 2012. Or head for historical sites such as the New Älvsborg Fortress, probably the best-preserved fortress in Sweden.



- Liesberg Amusement Park is not only the second largest amusement park in Europe, but also home to 20,000 square metres of flowers and gardens.
- Take a stroll around the picturesque Haga Quarters, the old town of Gothenburg with its well-preserved old houses, antiques, crafts and coffee shops.
- Find out more – at the Universeum Science Discovery Centre, seven floors of challenge, experiment and discovery for the whole family.
- Go on a behind-the-scenes tour of the Gothenburg Opera.

JUST A LITTLE BIT DIFFERENT

Gothenburg's Botanical Garden is the largest of its kind in Europe, with more than 20,000 species of plants and an award-winning rockery. Or try The Garden Society, one of Europe's best preserved 19th century parks – with 2,500 roses, as well as the magnificent Palm House modelled on London's Crystal Palace.

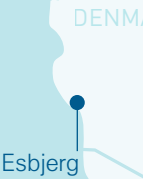


WWW.GOTEBORG.COM
WWW.PORTOFGOTHENBURG.COM/OUR-SERVICES/CRUISE/



FOCUS ON SUSTAINABILITY

- Esbjerg is at the centre of the renewable energy industry: boat trips take visitors to see the Horns Rev I and II offshore wind farms.
- The Wadden Sea and salt marsh are among the most valuable wetland areas in the world.



ESBJERG | Denmark VIKING HISTORY AND 'MAN MEETS THE SEA'

Svend Wiig Hansen's monumental sculpture 'Man meets the Sea' marks out Esbjerg as something different. The region's history is inextricably bound up with the sea, from its Viking ancestors to the Flood Column in the medieval city of Ribe which recalls terrible catastrophes over the centuries.

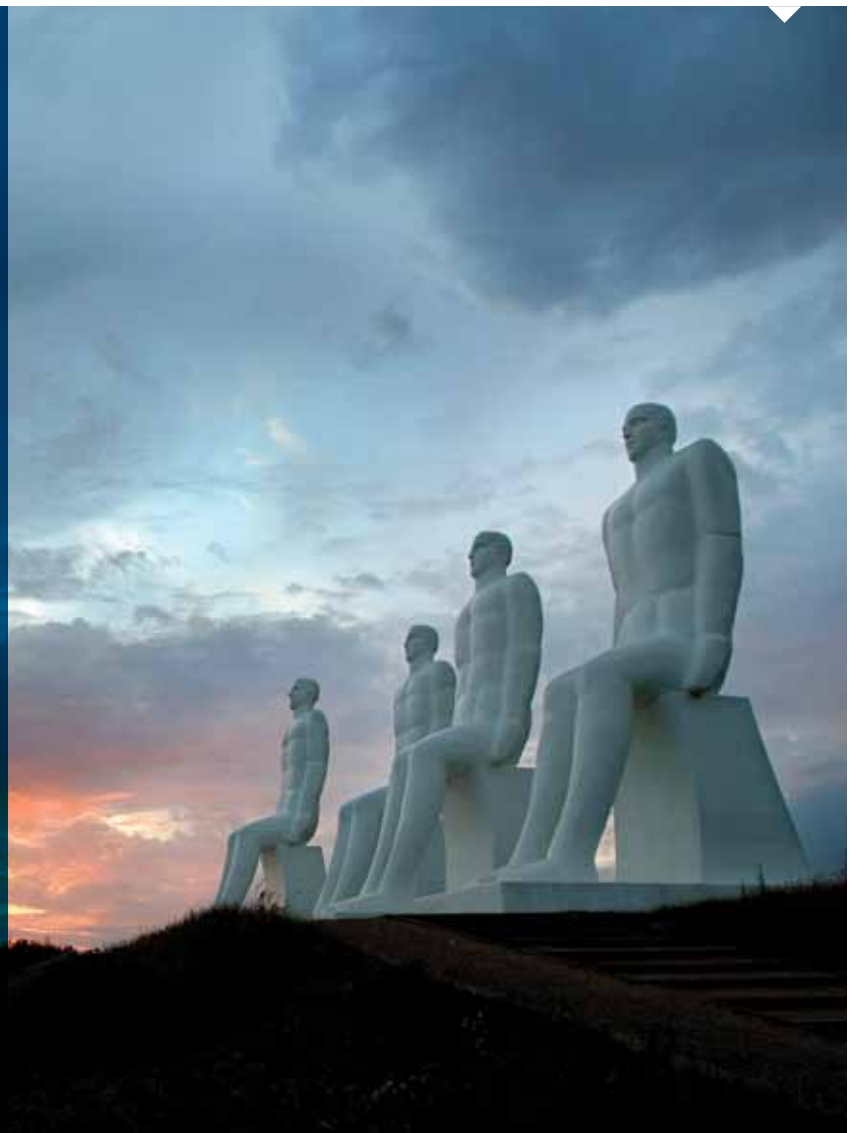
But far from being stuck in the past, Esbjerg has always shown a great willingness to change. Where trade and fishing once dominated the port, offshore drilling propelled Esbjerg into the limelight from the 1970s – and today it is also at the centre of the offshore wind energy sector.

- Esbjerg buzzes with energy and this is reflected in the cultural scene, with more than 500 events through the year, from art to gymnastics to music.
- Esbjerg's back garden is the Wadden Sea National Park, soon to be included on UNESCO's World Heritage List. Go on a seal safari, see the birds and fish, experience the powerful turn of the tides.
- The historic and charming island of Fanø can be reached by ferry in 12 minutes.

JUST A LITTLE BIT DIFFERENT

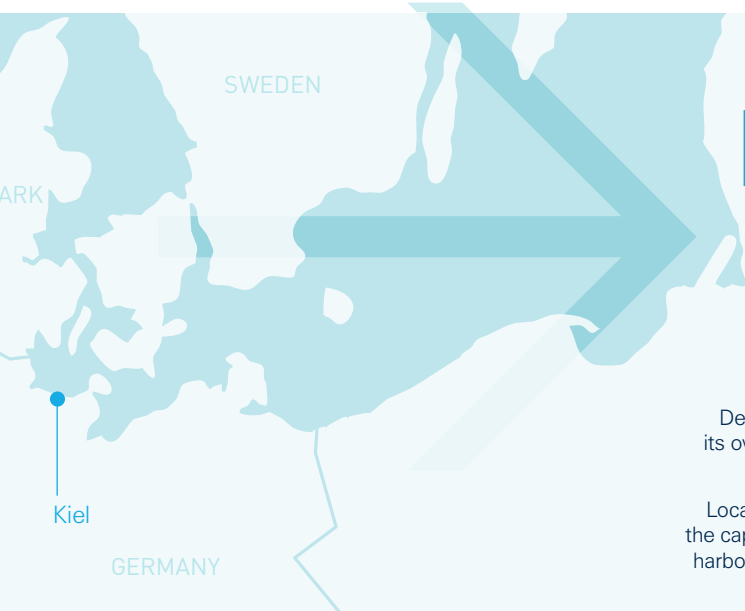
In half an hour, you can move from the dynamic city of Esbjerg to the charming winding streets and idyllic alleyways of Ribe, Denmark's loveliest medieval town. Or a 45 minute drive through the Danish countryside will take you to Legoland, where millions of Lego bricks have been used to build churches, castles, harbours, cities and sights, and more than 50 rides and attractions are on offer.

WWW.VISITESBJERG.DK



FOCUS ON SUSTAINABILITY

- 'Green' electricity is provided at all terminals – 100% waterpower.
- The Port of Kiel is in the city centre – close to the shops and main tourist attractions. No need for coaches or cars – shore excursions to the city can start right at the terminal.
- Enjoy a city free from traffic congestion and make the most of excellent rail connections direct to the port.



KIEL | Germany FRESH AIR AND THE MARITIME LIFESTYLE

Defined by water, wind and the seashore, Kiel has a maritime and urban charm all its own. In the heart of the city, enormous ferries and cruise ships, roofed shopping centres, Baltic Sea beaches and a vivid cultural scene merge together as one.

Located at the entrance to the world's busiest man-made waterway, the Kiel Canal, the capital of Schleswig-Holstein is inextricably linked to the water, with its expanding harbour, cruise ship terminals, world-renowned oceanographic research, world-class water sports and reputation as one of the world's top sailing destinations.



- Take time out on one of the numerous beaches at the Kiel Fjord or stroll along the seaside promenades.
- Explore boutiques, cosy cafes and a wide range of culture, including museums, music and botanical gardens.
- Discover the cultural diversity of the eight museums right on the edge of Kiel Fjord.
- Visit the art nouveau town hall, a Kiel landmark; the view from the 106 metre high tower is sensational.

The beautiful, hilly landscape and lakes of Holsteinische Schweiz (Holstein Switzerland) and small, pretty and historic villages near Kiel are well worth a visit.

JUST A LITTLE BIT DIFFERENT

At the Molfsee open air museum, visitors can marvel at more than 70 restored historical buildings, where craftsmen from bakers to blacksmiths go about their work in the traditional manner.

WWW.PORTOFKIEL.COM
WWW.KIEL-SAILING-CITY.DE



FOCUS ON SUSTAINABILITY

- Columbus Cruise Center runs a bus shuttle service to the main station.
- Bicycles can be rented directly at the terminal.
- Green issues play a central role for Bremenports port authority, where engineers and environmental planners have implemented many measures to protect nature and the countryside. The port authority works in partnership with the neighbouring National Park.



BREMERHAVEN & BREMEN | Germany HISTORICAL, INNOVATIVE, BUZZING & MARITIME

Bremerhaven welcomes visiting cruise ships at the Columbus Cruise Center, the very spot from which more than eight million emigrants left Europe for the New World, from the early 19th century onwards. Find out about their story at the German Emigration Center, or explore Bremen's wider seafaring tradition on the Maritime Mile, where Germany's first man-made harbour was built 400 years ago and the country's last fully rigged ship afloat is anchored.

The Hanseatic city of Bremen on the River Weser has been shaped by 1,200 years of history. Famous landmarks are the magnificent UNESCO World Heritage listed town hall and Gerhard Marcks' bronze statue of the Bremen Town Musicians from the Brothers Grimm fairytale.



- Visit St Peter's Cathedral, with its towers stretching 99 metres into the air. Then step back in time and visit pretty half-timbered houses dating back more than 500 years in the narrow lanes of the Schnoor Quarter – browse for handicrafts and hand-made goods, or call in at the House of History.
- Take a tour to the Klimahaus Bremerhaven 8° Ost (Climate House 8° East) for an unforgettable journey around the world – or learn about northern and marine animals at the Zoo at the Sea.
- Visit the beautiful Teufelsmoor region, where beautiful countryside has inspired generations of artists and poets.

JUST A LITTLE BIT DIFFERENT

Breathe in the fresh air and admire a remarkable landscape on a Wadden Sea wagon ride from Cuxhaven to Neuwerk. Or take a trip to the Ratskeller, Germany's oldest wine cellar; dating back to 1409, it holds 650 exquisite varieties.

WWW.CRUISEPORT.DE
WWW.BREMERHAVEN.DE
WWW.BREMEN-TOURISM.DE



FOCUS ON SUSTAINABILITY

- Energy-efficient forklift trucks are used to serve cruise ships, reducing fuel consumption and carbon dioxide emissions.
- Other 'green' features include an automatic light management system to save electricity, sound insulation of the mobile cranes and quayside power supply connections for refrigerated trucks.
- Onshore power for cruise ships is being installed for 2015.

HAMBURG | Germany OLD & NEW, A TOURIST METROPOLIS

Hamburg is a unique mix of old and new, side by side.

Large, historic churches include the city's most famous landmark, St Michael's Church (the 'Michel') with its 132 metre high tower. Visitors are also drawn to the magnificent City Hall and to houses with small timber-framed facades dating back to the 17th century.

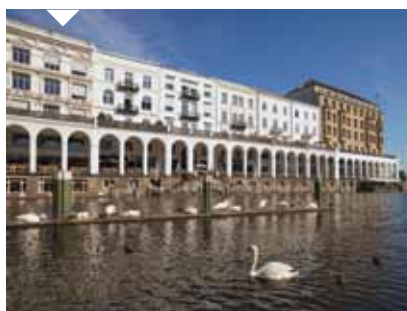
In total contrast, Hamburg's HafenCity offers the ultra-modern, including the new Elbe Philharmonic Hall now being built and easily spotted from visiting cruise ships.

- Try the shopping: Hamburg has been described as 'a shopping Eldorado'. At the heart of the city, you'll find a concentration of elegant shopping malls, arcades and streets full of sophisticated designer boutiques, haut couture, exquisite jewellery and top quality watches.
- Perfect choreography, passionate songs, first-class orchestras: Hamburg is Germany's musical capital and provides a stage for global entertainment stars, as well as a lively club scene.
- Visit the largest model railway in the world, Miniaturwunderland.
- Join a unique factory visit – see how original Hamburg beer is brewed, or watch tea-tasters at work.

JUST A LITTLE BIT DIFFERENT

Take a walk from the Central Rail Station to City Hall during the weeks before Christmas and you'll find five different Christmas Markets to enjoy within 1,000 metres. In no other city are they so close together, and it's a key reason why Hamburg's cruise season lasts 365 days a year.

WWW.HAFEN-HAMBURG.DE
WWW.HAMBURGCUISECENTER.DE





FOCUS ON SUSTAINABILITY

- Aberdeenshire is committed to the protection of its heritage for future generations – ensuring sustainability as well as accessibility.
- Scotland is a world leader in the certification of visitor attractions for Green Tourism and environmental sustainability.

ABERDEENSHIRE | Scotland DRAMATIC HISTORY & ROYAL CONNECTIONS

Scotland's turbulent and dramatic past has left a legacy of towering castles scattered across the stunning landscape – accompanied by a wealth of myths and legends. Top attractions in Aberdeenshire include the clifftop fortress of Dunnottar and the 16th century Crathes Castle.

Alongside that dramatic heritage, popular visitor destinations include the Royal residence of Balmoral, the highest 18-hole golf course in Britain, art galleries and museums, and some of Scotland's oldest distilleries.



- Visit Dunnottar Castle, which is leading the Visit Scotland tourist poll for nominating a Scottish 'Eighth Wonder of the World'.
- Stroll around Pitmedden Gardens, laid out in 1675 by Sir Alexander Seton. Recreated in the 1950s, the garden features more than five miles of box-hedging arranged in intricate patterns to form six parterres filled with colour in the summer months.
- Spend time at Aberdeen Maritime Museum, which incorporates Provost Ross's House, built in 1593. As well as a collection covering shipbuilding, fast sailing ships, fishing and port history, it has unique displays on the North Sea oil and gas industry.
- Take time out at Balmoral Castle and estate, described by Queen Victoria as 'my dear paradise in the Highlands'.
- Take a trip to Royal Lochnagar, Fettercairn or Glen Garioch distilleries, where age old traditions and craftsmanship produce one of Scotland's most exclusive whiskies.

JUST A LITTLE BIT DIFFERENT

At around 1,200 feet above sea level and in the heart of the Cairngorms National Park, Braemar is the highest 18-hole golf course in Britain.

WWW.ABERDEEN-GRAMPIAN.COM



HAVEN GATEWAY | England

HISTORY AND HERITAGE UNDER WIDE OPEN SKIES

Haven Gateway

Experience East Anglia, a region of beautiful coasts and countryside, wide open skies and historic attractions.

London and Cambridge are big draws for cruise passengers calling in at Harwich – but far closer at hand are the landscapes made famous by painter John Constable, the timbered buildings of Lavenham, and a massive choice of stately homes and famous gardens, not to mention the delights of local oysters, fish and chips, jam and beer.

FOCUS ON SUSTAINABILITY

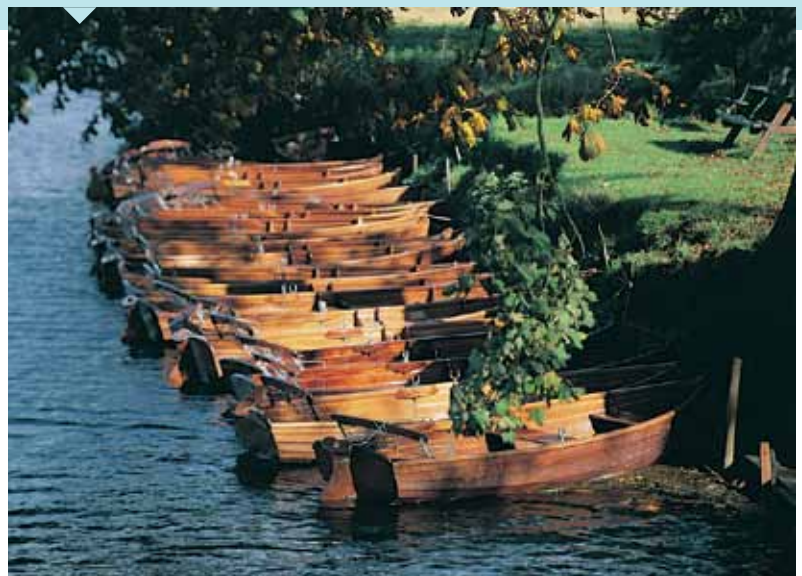
- Harwich International Port is served by its own railway station, with regular train services into the centre of London.
- Harwich is an important base for the offshore wind farm industry, providing support for the construction and operation of several major projects.

- Visit Colchester, Britain's oldest recorded town and once the capital of Roman Britain. Take a look round Colchester Castle, the largest Norman keep in Europe and now a museum full of hand-on displays and historical objects.
- Explore the awe-inspiring Anglo Saxon royal burial site at Sutton Hoo, one of Britain's most important and atmospheric archaeological sites.
- Follow Harwich's Maritime Heritage Trail: it takes in the house of Christopher Jones, master of the Mayflower, which sailed to America in 1620 with some of the very first 'adventurers and pilgrims', and the Redoubt, a circular Napoleonic Fort built in 1808.
- Take a look round the 12th century Framlingham Castle, and hear the tragic stories of Anne Boleyn and Catherine Howard, both married to and beheaded by Henry VIII.
- Enjoy the musical legacy of Britten at Aldeburgh and Snape Maltings.

JUST A LITTLE BIT DIFFERENT

Flatford Mill features in some of John Constable's most famous paintings. Find out more at the Bridge Cottage exhibition, then take time to admire the countryside that inspired the artist – now recognised as an Area of Outstanding Natural Beauty. Wander along the riverside or hire a boat and row along the River Stour.

WWW.HARWICH.CO.UK
WWW.VISITESSEX.COM



FOCUS ON SUSTAINABILITY

- Few ports offer a berth so close to the heart of the city. Enjoy the sights and sounds of the city from the moment you step ashore.
- Trains are an excellent option for many shore excursions.
- The Port of Antwerp won the 2012 Award for the Best Belgian Sustainability Report. As well as the construction of ecological infrastructure within the port, core nature areas are being established around the port area.



ANTWERP | Belgium FASCINATION, EVEN BEFORE YOU ARRIVE

With spectacular natural scenery, fascinating historical sights and breathtaking port infrastructure lining the route upriver, the Antwerp experience for cruise passengers begins well before berthing. And on arrival? Step off the ship and into the city's fairytale cobbled streets, complete with their enticing chocolatiers and boutique shopping.

In the 16th century, Antwerp was one of the most important cities in the world. That means a rich legacy of monuments, churches, museums and art collections.



- Discover the home and work of Baroque painter Peter Paul Rubens, renowned as the 'painter of princes and the prince of painters'.
- Gaze at the Cathedral of Our Lady, one of the finest Gothic buildings in Europe and a masterpiece of lacework in stone. The 123-metre spire reigns over the city; inside, visitors can see four Rubens triptychs, magnificent stained glass windows and an impressive art collection.
- Be dazzled by the 'world diamond headquarters'. Eighty-five per cent of the world's rough diamonds are traded in Antwerp – the quality label 'Cut in Antwerp' can be admired in elegant boutiques.

JUST A LITTLE BIT DIFFERENT

North of the historic city centre, you'll find the maritime district, 't Eilandje, or 'the Little Island', a unique neighbourhood with beautiful waterfront, grand park, cosy marinas, splendid warehouses and two new spectacular museums. If you prefer the Belle Époque grandeur or an appealing mix of eclectic art nouveau houses and neo-classic villas, then visit the South and Zurenborg district.

WWW.VISITANTWERPEN.BE • WWW.ANTWERPEN.BE



FOCUS ON SUSTAINABILITY

- The Port of Rotterdam has held the 'Green Award' for many years, and offers reduced port dues to environmentally friendly ships. It is seeking to become one of the safest and most sustainable ports in the world, with a big focus on clean manufacturing, reusing materials, eliminating hazardous emissions and encouraging bio-based, renewable and green chemistry.
- Rotterdam is home to Green Wheels, a system of sharing environmentally friendly cars.



ROTTERDAM | The Netherlands COSMOPOLITAN, TRENDY, ENERGETIC – A 'COMEBACK CITY'

Home to great architectural diversity, and with a busy timetable of festivals, carnivals, music and other events, Rotterdam is worth every visit. Lonely Planet has ranked it among the '10 greatest comeback cities' in the world.

New and old coexist in perfect harmony; visit a state-of-the-art shopping centre and you might find yourself standing in front of an ancient building or historic bridge. Visit the Oude Haven (Old Port) and the Witte Huis (White House – 1898), once the highest office building in Europe. Visit the Binnenrotte, home to the 15th century Laurens Church overlooking the longest open air market in Europe. Or take yourself up the 185 metre high Euromast observation tower, one of the highest buildings in the city today.

- Cruise ships approach the historic cruise terminal in the heart of the city via the picturesque Nieuwe Waterweg.
- A number of fascinating museums are within easy reach of the terminal – including the World Museum, Maritime Museum, Boymans Museum and Kunsthall.

JUST A LITTLE BIT DIFFERENT

In 2013, Holland America Line celebrates its 140th anniversary. The former HAL flagship, SS Rotterdam, is now a hotel, restaurant and events location, boasting one of the most beautiful terraces in the city.

EN.ROTTERDAM.INFO/VISITORS/EVENTS/FESTIVALS-EVENTS/
WWW.CITYGUIDEROTTERDAM.COM



FOCUS ON SUSTAINABILITY

- Copenhagen's new 1,100 metre long cruise quay has waste water reception facilities taking 300 cbm per hour per ship. Rainwater is collected and used to flush the pipes.
- Green roofs on the terminal buildings provide insulation from cold and heat. Solar energy panels, a sustainable indoor climate solution, translucent building elements of polycarbonate and roof windows all minimise electricity consumption.
- Electric pallet trucks handle luggage and provisions on quay and in terminals.



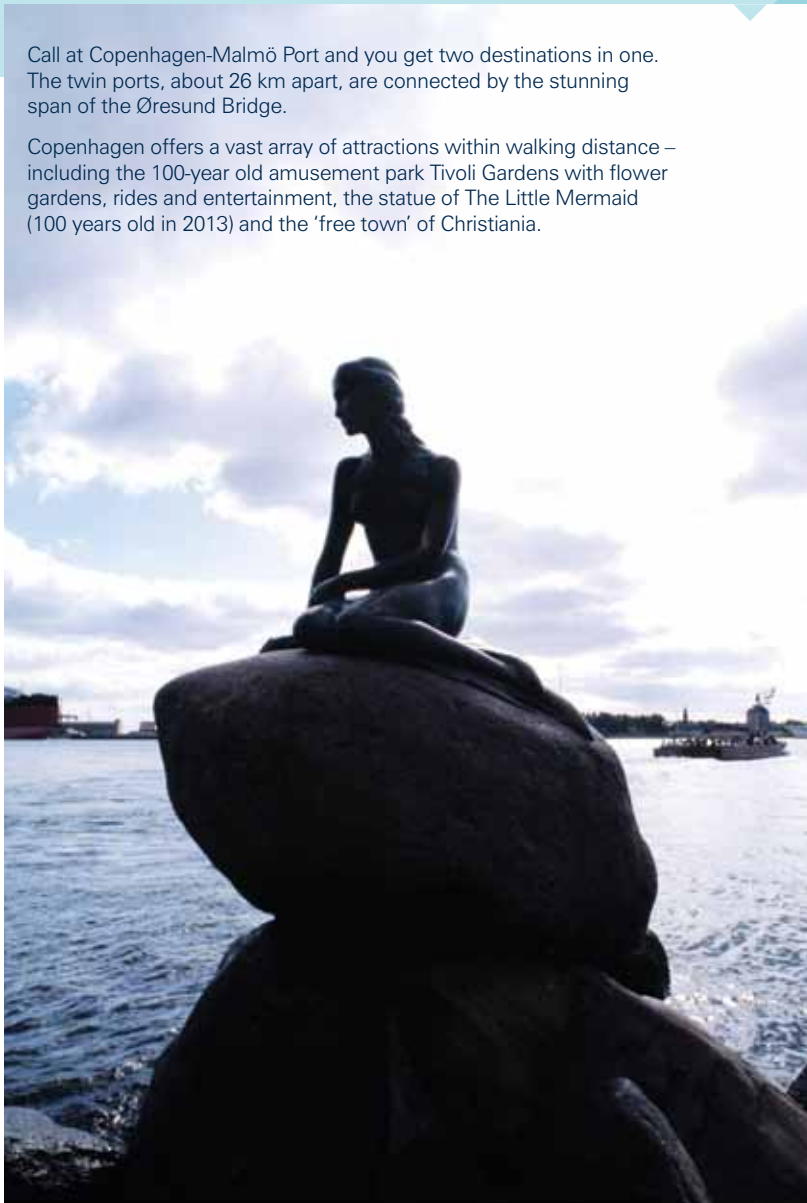
COPENHAGEN-MALMÖ | Denmark & Sweden

ONE PORT, TWO COUNTRIES, AN OCEAN OF OPPORTUNITIES



Call at Copenhagen-Malmö Port and you get two destinations in one. The twin ports, about 26 km apart, are connected by the stunning span of the Øresund Bridge.

Copenhagen offers a vast array of attractions within walking distance – including the 100-year old amusement park Tivoli Gardens with flower gardens, rides and entertainment, the statue of The Little Mermaid (100 years old in 2013) and the 'free town' of Christiania.



- Take a canal cruise, ride a bicycle or stop for a beer or Danish pastry and enjoy the atmosphere.
- Watch the changing of the guard at the home of the world's oldest monarchy.

Malmö offers a contrast to the big city buzz of Copenhagen – cosy and charming, it's known as the 'city of parks'.

- Visit Malmöhus Castle, home to several major museums.
- Marvel at the immense and beautiful St Peter's Church, the city's oldest building.

JUST A LITTLE BIT DIFFERENT

Rosenborg Castle in Copenhagen was built by Christian IV. In the basement you will find the Danish crown jewels and regalia. For more drama, head north to Kronborg Castle in Elsinore; built in 1574-1585, it's known worldwide from Shakespeare's Hamlet. Hamlet's spirit still roams the hallways, and in summer you can experience professional performances of Hamlet on an open air stage in the courtyard.

WWW.CMPORT.COM
WWW.CRUISECPHAGEN.COM/
WWW.MALMOTOWN.COM/EN/



HARDANGERFJORD ●

SUSTAINABILITY

→ A USP FOR NORTH SEA REGION CRUISING

What is sustainability? And is anyone willing to pay for it?... these were two key questions tackled within the Cruise Gateway North Sea project.

ABERDEENSHIRE ●

Cruise Gateway North Sea, a European Union Interreg IVB North Sea Region Programme project, carried out detailed and valuable analysis into sustainable cruise tourism, covering environmental, societal and economic elements.

This complements the wide range of environmental initiatives being pursued by the project's partners – minimising energy consumption and improving 'green' features in cruise terminals, providing onshore power for cruise ships to reduce noise and emissions, protecting sensitive landscapes and visitor attractions from damage, and encouraging the use of low-carbon transport options to and from the ship.

Cruise Gateway has delivered a 'Best Practice Guide for Sustainable Cruise Tourism in the North Sea Region' which gives clear recommendations on sustainability across four areas:

- Environmental: energy, atmosphere, water, biodiversity, resources and waste, land use and soils;
- Social: culture, collaboration, wellbeing, travel;
- Economic: financial impacts, employment, reputation;
- Technical: management, supply chain, quality.

Cruise Gateway also produced a major report that considers how sustainability can be incorporated into branding strategies, with a number of recommendations for cruise ports considering 'green' initiatives.

A Cruise Gateway survey asked passengers whether they would be willing to pay more for their cruise if they knew that the cruise line supported sustainability efforts. The results were remarkable: 35% said they would pay €50 more, 15% said they would pay €100 and 15% said they would pay more than €100.

This is a clear 'tick' in the box for Cruise Gateway North Sea, which set a target of establishing the North Sea Region as a 'beacon for sustainable cruise'.

HAVEN GATEWAY ●

ROTTERDAM ●

ANTWERP ●

● GOTHENBURG

● COPENHAGEN-MALMÖ

● ESBJERG

● KIEL

● BREMERHAVEN

● HAMBURG

● BREMEN

CONTACT DETAILS:

LEAD PARTNER:

PORT OF HAMBURG MARKETING

ADINA CAILLIAUX

T: +49 40 37709 172

E: cailliaux@hafen-hamburg.de

HAMBURG CRUISE CENTER

NADINE PALATZ

T: +49 40 30051393

E: palatz@hamburg-tourism.de

RICHARD MORTON

COMMUNICATIONS MANAGER

T: +44 7796 334960

E: richard@juraassociates.com

BUSINESS PARTNER:

UNICONSLT

HANS-ULRICH WOLFF

T: +49 40 74008 105

E: u.wolff@uniconsult-hamburg.de



www.cruisegateway.eu

European Union  The European Regional Development Fund

**The Interreg IVB
North Sea Region
Programme**

*Investing in the future by working together
for a sustainable and competitive region*

