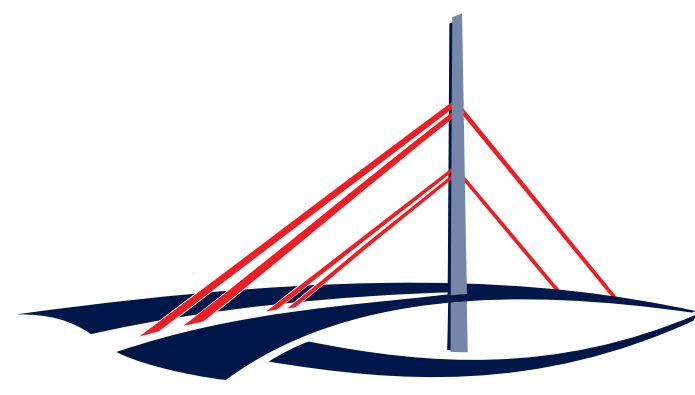




"3-Weier-Control"

Agency of Roads, Bridges and Waters (LSBG), Germany



Landesbetrieb
Straßen, Brücken
und Gewässer

Main Idea

Estimating the weir control capacity and developing a flood management practice for the river Ammersbek.

Approach

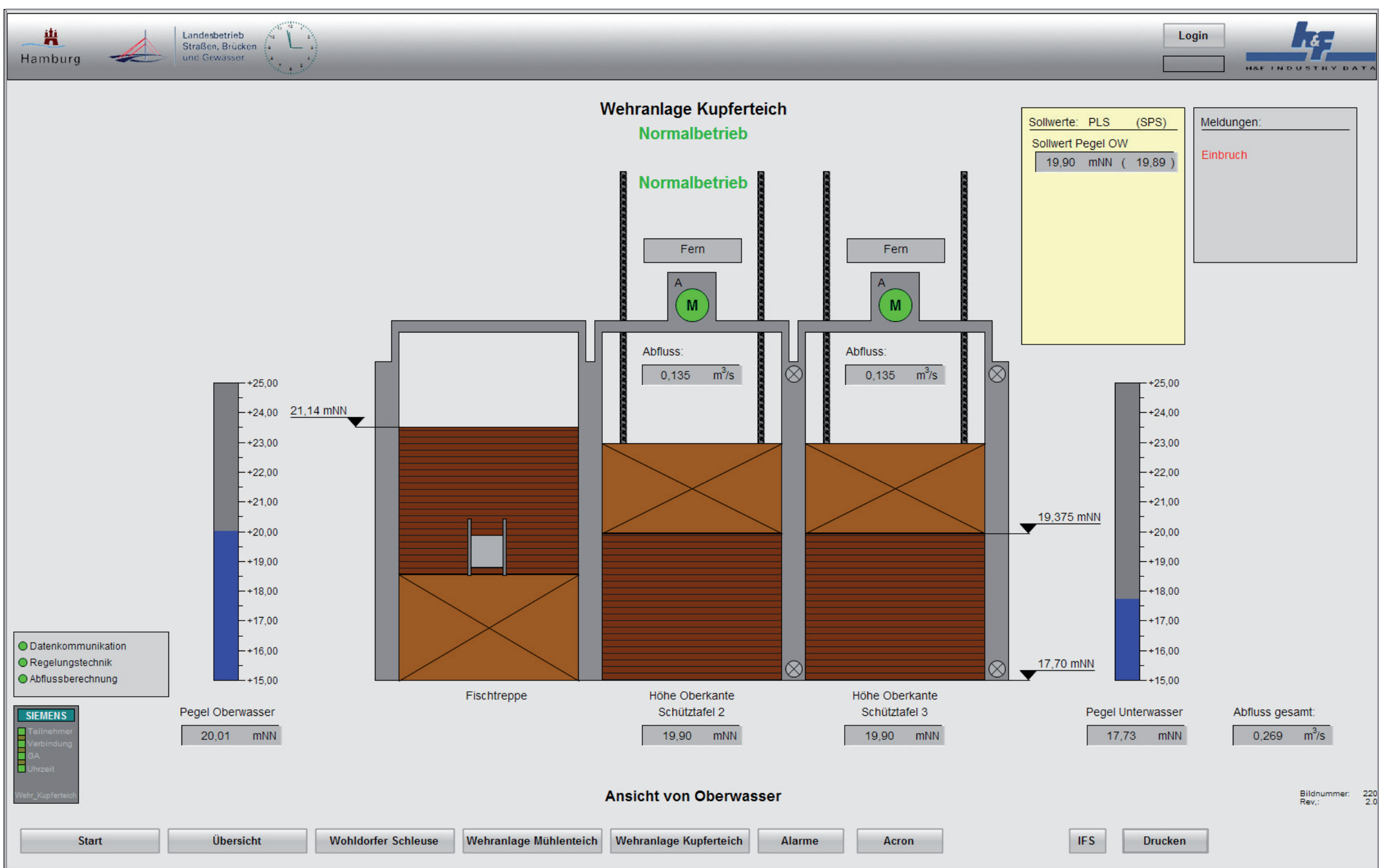
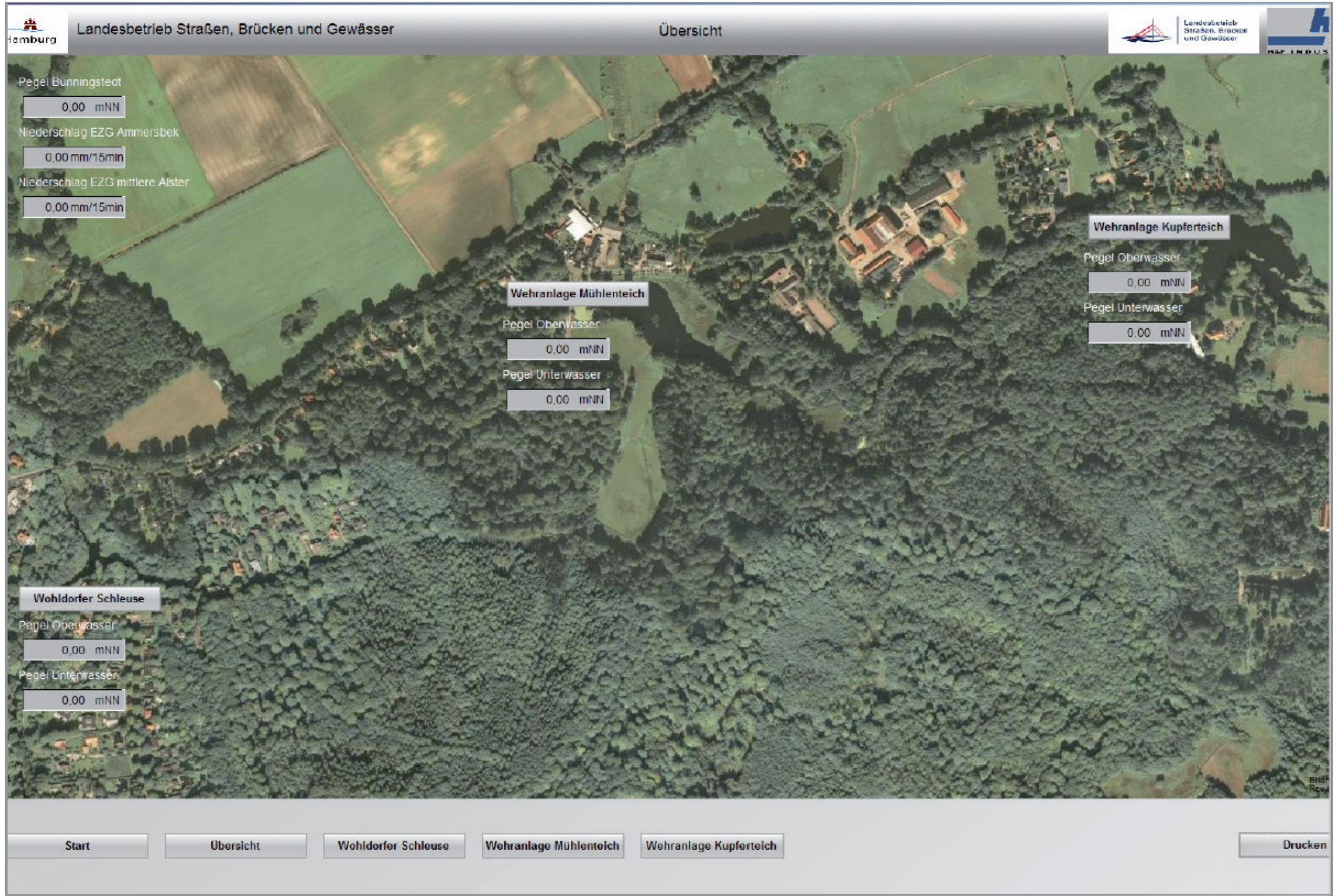
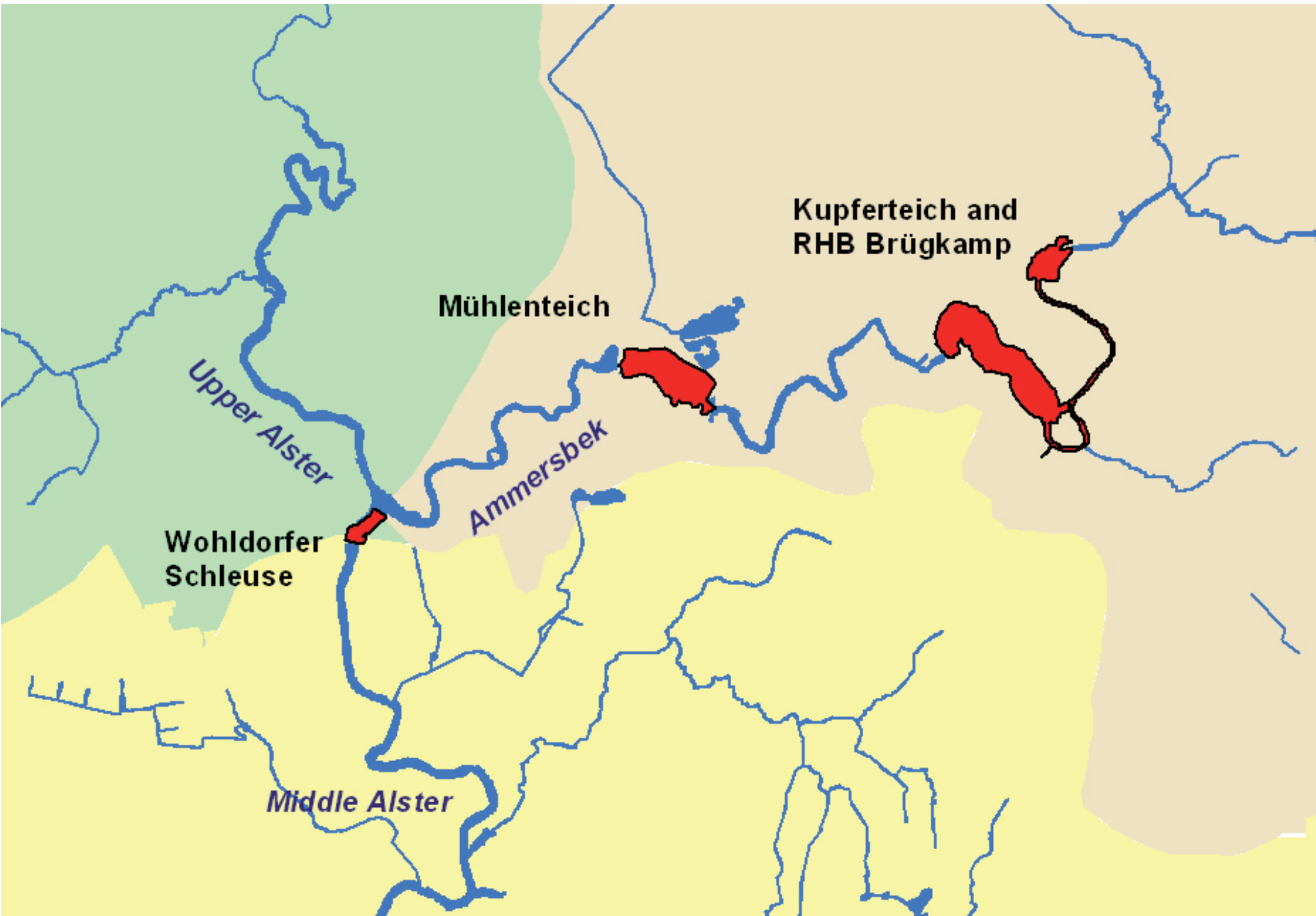
The system behaviour of the Alster catchment down to the sluice of Fuhlsbüttel (middle Alster) was studied by analysing several river gauging and precipitation data and setting up a rainfall runoff model. Based on the results a strategy was developed to control 3 consecutive weirs with their upstream ponds situated in the mouth of the river Ammersbek flowing into the middle Alster.

Results

Model outputs for different synthetic rainfall hydrographs show that the important floods in the middle Alster are mainly formed in the upper natural catchments. Therefore a weir control in the Ammersbek basin can be considered a reasonable action contributing to flood management in the middle Alster.

Contribution to SAWA

The "3-Weier-Control" contributes as a cased based reasoning system (technical) on how to integrate adaptive non-structural measures into catchment passed Flood Risk Management Planning.



Co-partner



EUROPEAN UNION
European Regional
Development Fund

Investing in the future by working together for a sustainable and competitive region

www.sawa-project.eu

