



Strategic Alliance for integrated Water management Actions

Final
Conference

Flood Risk Management Plan in Sweden

County Administrative Boards of Västra Götaland and Värmland

Main Idea

- » To develop a draft action plan for how to deal with flooding in the Municipality of Lidköping, Sweden.
- » To use the approach of a flood risk management plan (FRMP) according to the Flood Directive and demonstrate the importance of using a bottom-up perspective in developing the plan.

Approach

- » Lidköping is situated on the southern shore of Lake Vänern. It is low-lying and at great risk of being flooded by the lake especially even more so in the light of climate change.
- » The work started in Autumn 2010. A working group was created consisting of representatives from the two county administrative boards' SAWA-team and the municipality's different departments: Planning and Construction, Water and Sewage, Heat production, Environment and Health, provision of Electricity, provision of Broadband and Crisis Management.
- » The working group had four workshops, which resulted in a draft action program based on the vulnerability of each sector.
- » Based on the flood risk map produced earlier within the SAWA project, a thorough analysis was done of what happens when the water level of Lake Vänern rises centimeter by centimeter and a preliminary list of possible adaptive measures put together. Interesting was to notice the importance of the interdependence of the different sectors: if electricity goes no pump will work, if broadband connections are cut off crisis management will be seriously hampered etc.
- » During one of the workshops an invited specialist held a lecture on the concept of cost-benefit analysis.
- » Measures recommended ranged from improving current routines and basic data about the municipality to the more challenging tasks of protecting or displacing the main district heating and sewage treatment plants.

Results

- » The discussions in the working group were at times intense and interesting and demonstrated the benefit of people from the different departments sitting together at the same table. This resulted in an agreement on the most urgent measures to be carried out.
- » The Municipal Executive Board has now decided to have the three most important measures proposed in the draft action program investigated more in detail: how to secure the sewage treatment and central heating plants and how to displace a low-lying electrical substation.

Contribution to SAWA

- » One urban FRMP in progress
- » Good practice recommendation on how to deal with FRMPs for municipalities in Sweden and elsewhere in the EU.

Partners



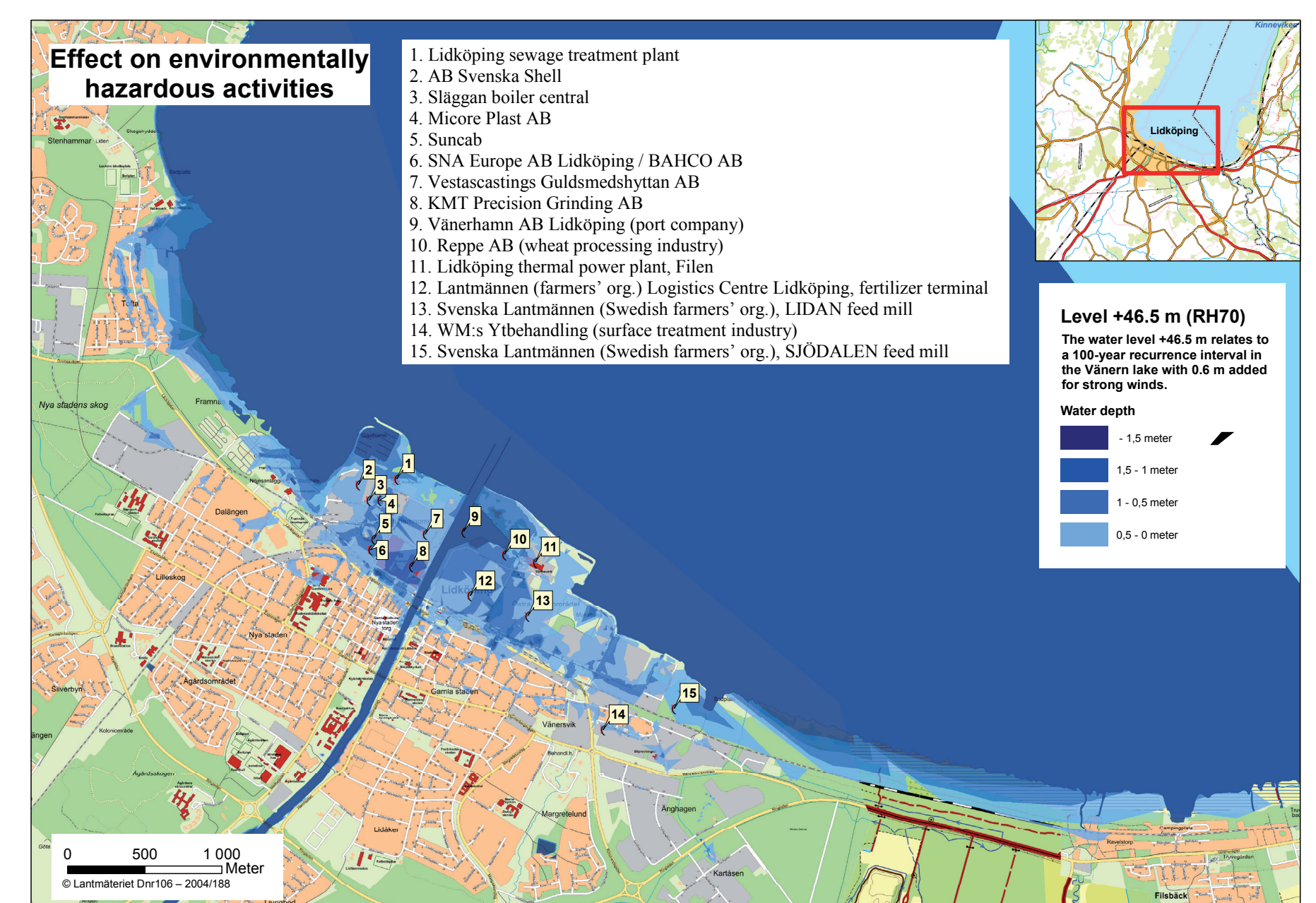
Länsstyrelsen
Värmland



LÄNSSTYRELSEN
VÄSTRA GÖTALANDS LÄN



Presentation for the Lidköping Municipality



SAWA Sweden co-workers:
Susanna Hogdin & Johan Mannheimer



EUROPEAN UNION
European Regional
Development Fund

Investing in the future by working together for a sustainable and competitive region

www.sawa-project.eu

The Interreg IVB
North Sea Region
Programme

