

The Governance of Dryport Integration

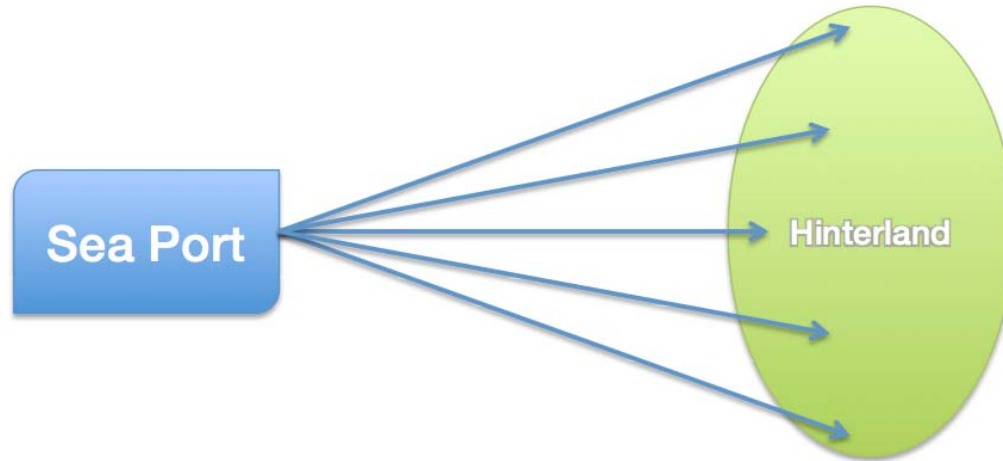
- Case Studies on the Implementation and
Operation of Dryports

Structure

- **Introduction: Why Dryports?**
- Overview Cases
- Conclusions: The Potential of Dryports
- Recommendations: Clearing Bureau or Expert Network?

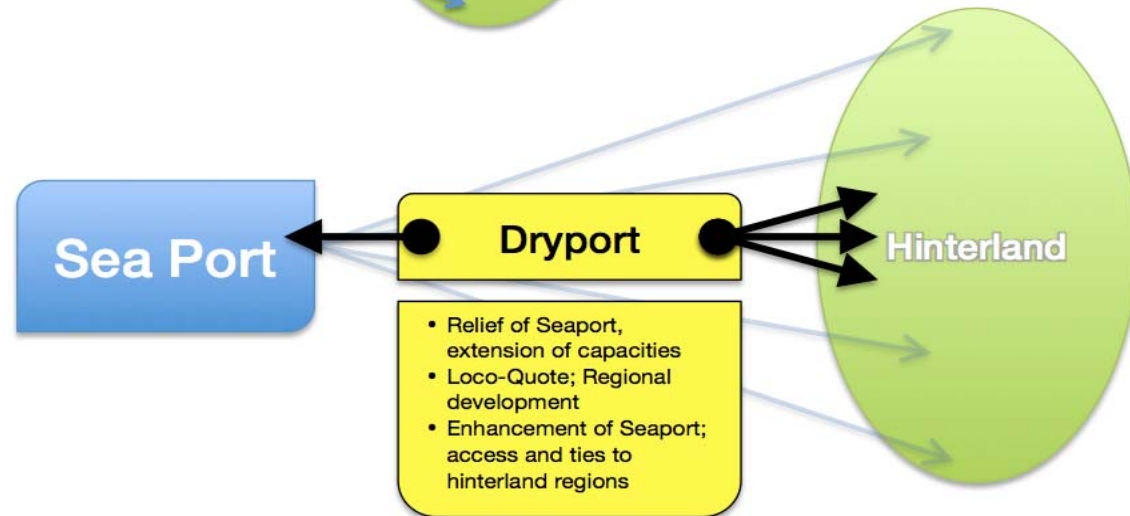


Sea Port – Hinterland Connections



Conventional
Hinterland
Connection

Hinterland
Connection via
Dryport

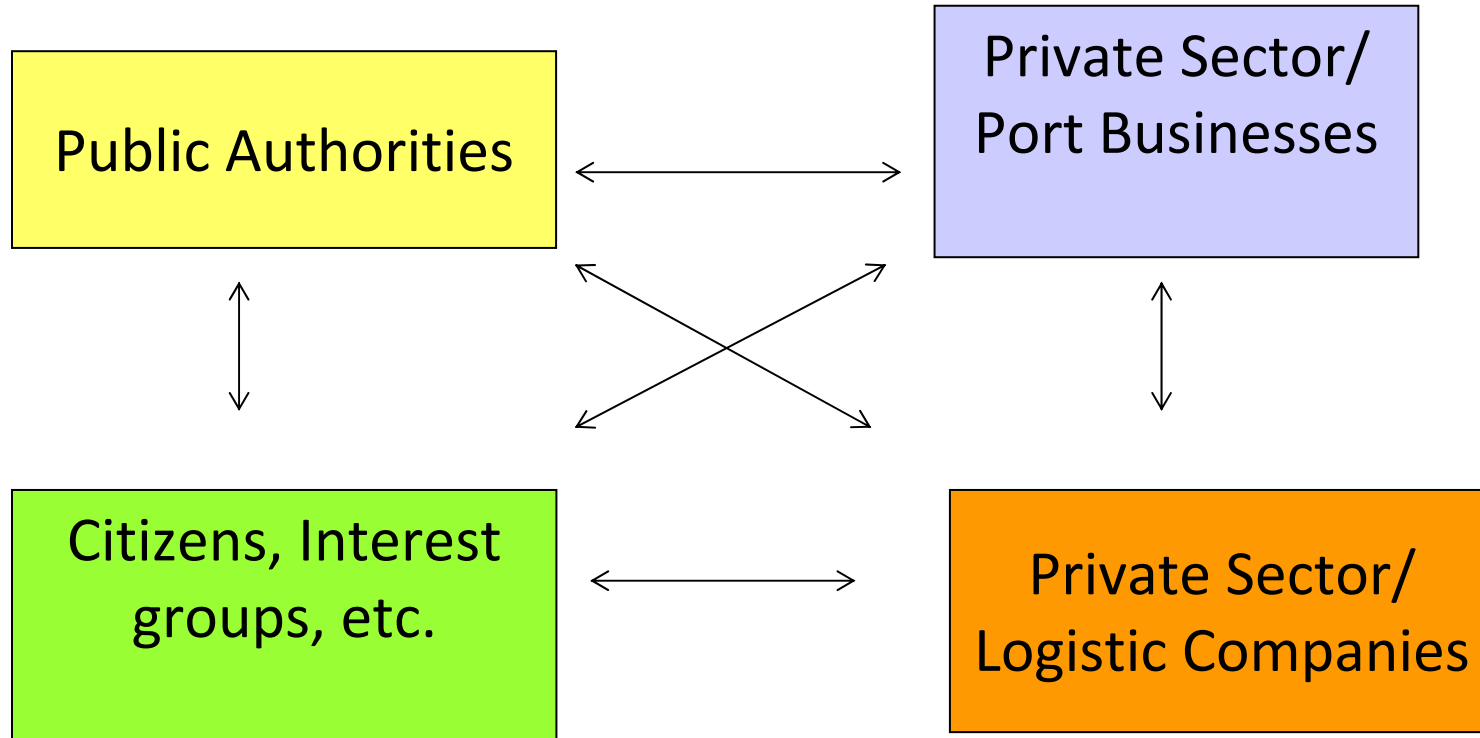


Guiding Questions

- Differences: What are the regional, economical, political etc. specifications of each case?
- Conditions: Which conditions lead to what kind of dryports?
- Benefits: Which benefit can a dryport provide for a sea port?
- Potentials: Suggestions for efficient integration of hinterland connections and dryports into logistic chains, regional structures and business strategies.



Stakeholders and Relations



Research Areas

Governance/Policy	<ul style="list-style-type: none">• Regulations (environment etc.)• Political differences• Ownership structures• Co-operations with institutions, associations etc.• Involvement of citizens and other actors• Conflicts of land use,• Cost-benefit relations
Business Models/ Economic Interests	<ul style="list-style-type: none">• Corporate strategies• Site-related factors• Co-operations (allocation of tasks)• Competition• Political connections (PPP-models)• Ownership-structures



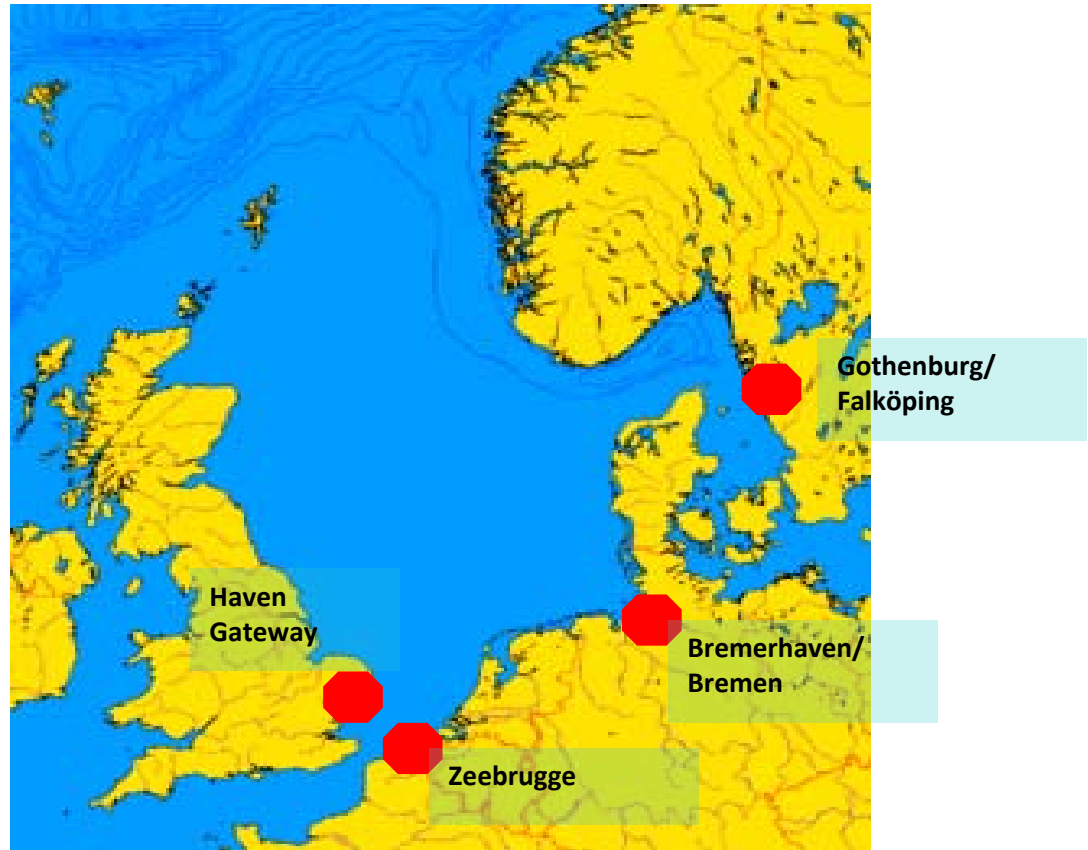
Structure

- Introduction: Why Dryports?
- **Overview Cases**
- Conclusions: The Potential of Dryports
- Recommendations: Clearing Bureau or Expert Network?



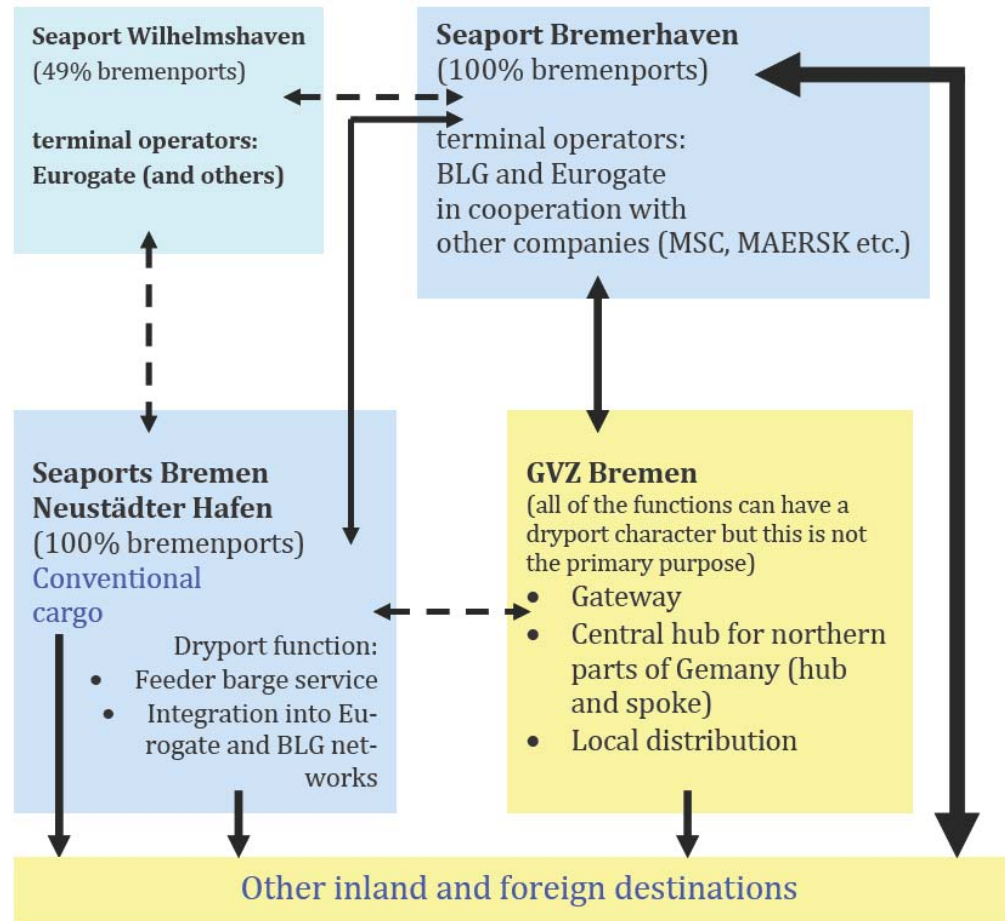
Four Cases in the North Sea Region

- Bremen/Bremerhaven
- Gothenburg/Falköping
- Haven Gateway
- Zeebrugge



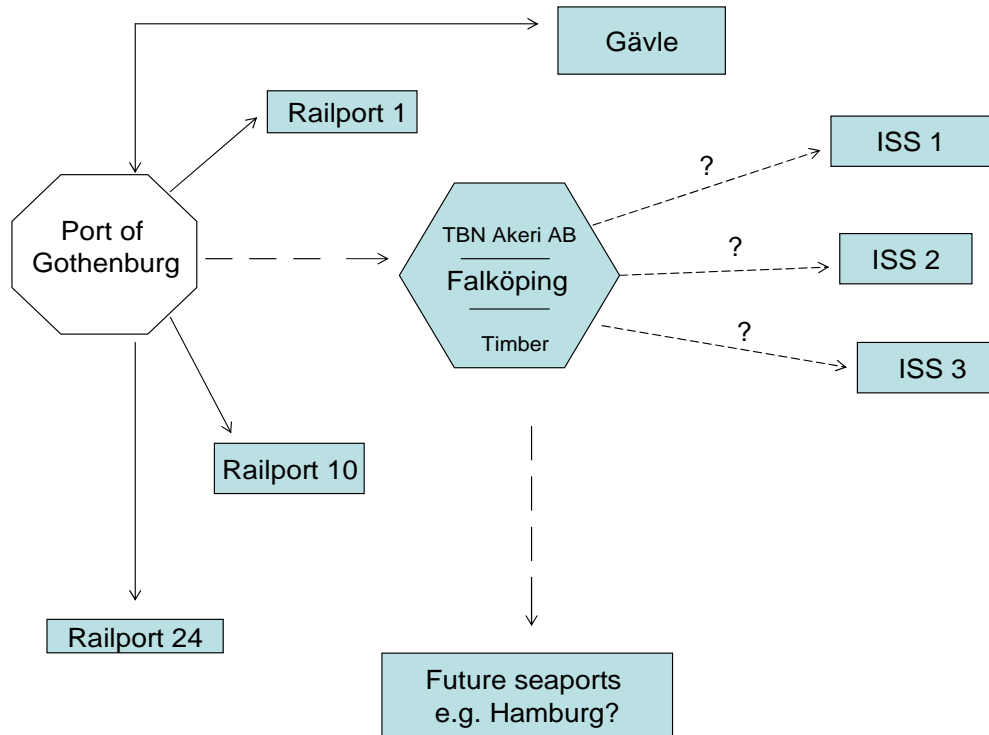


Bremen/ Bremerhaven



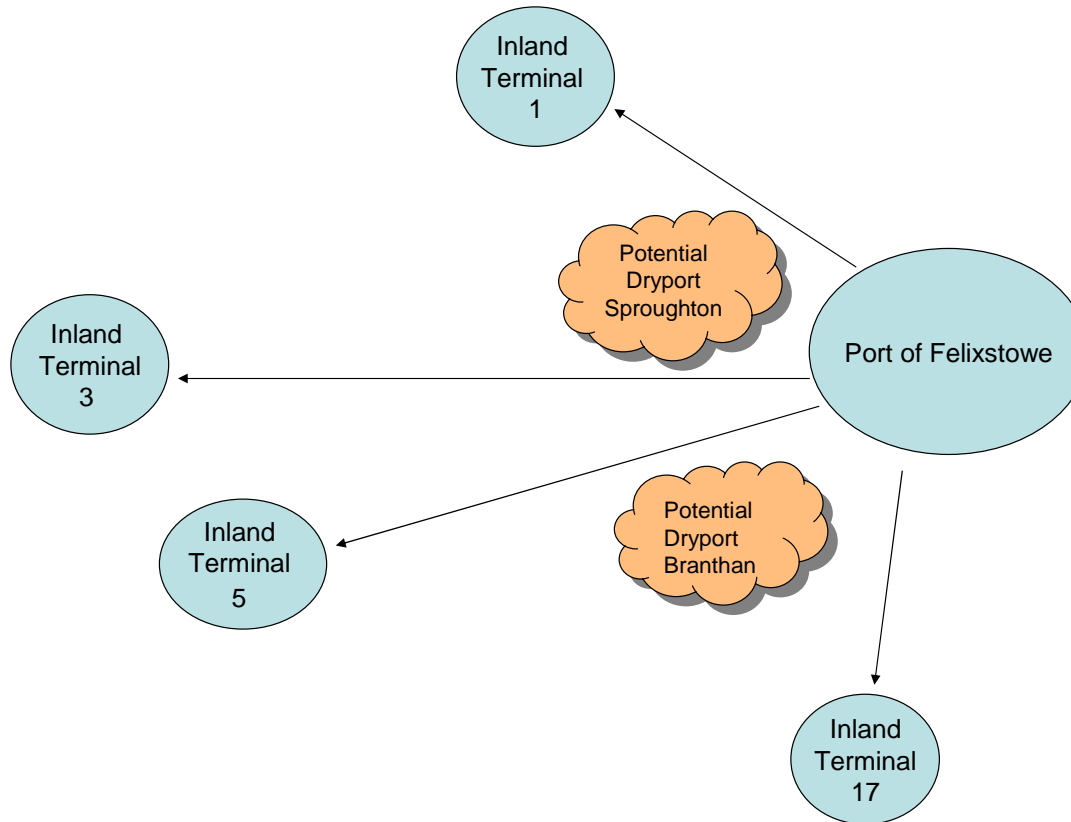


Gothenburg/Falköping



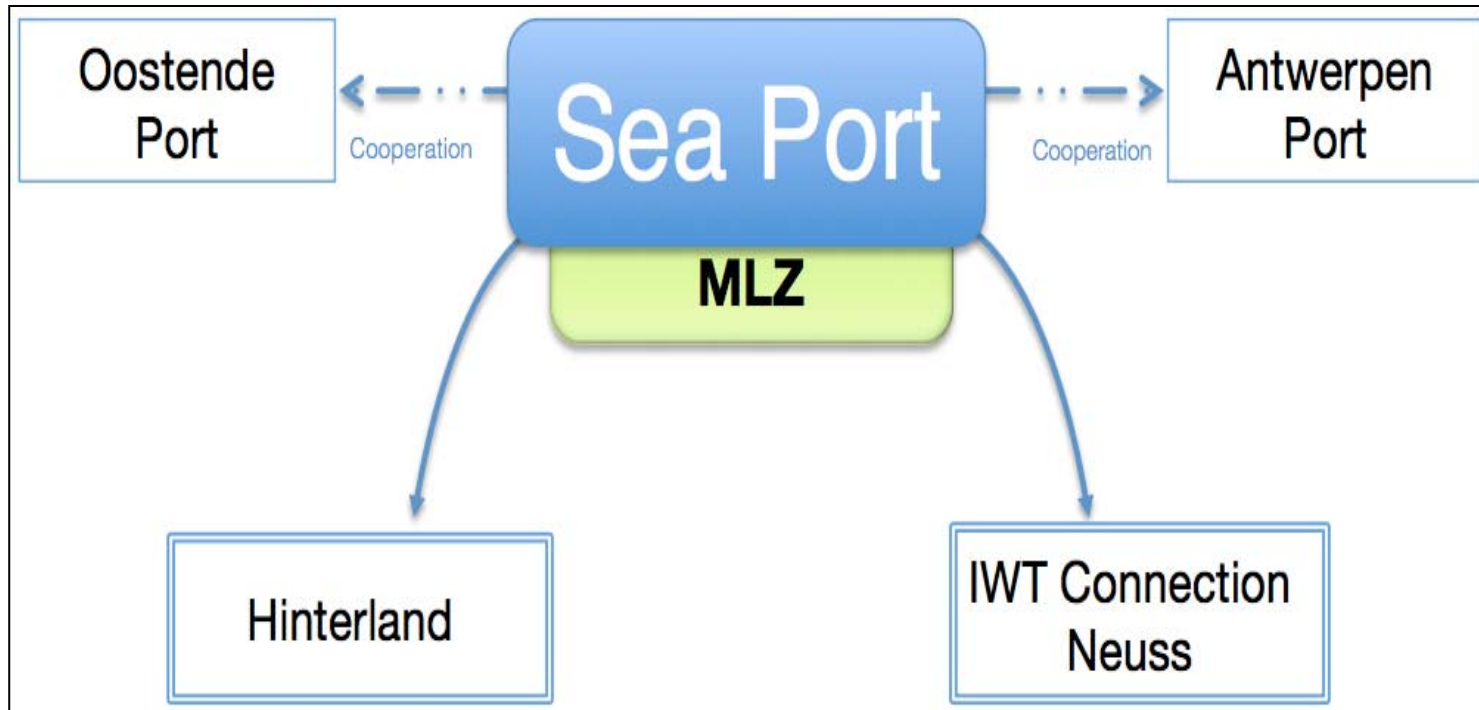


Haven Gateway



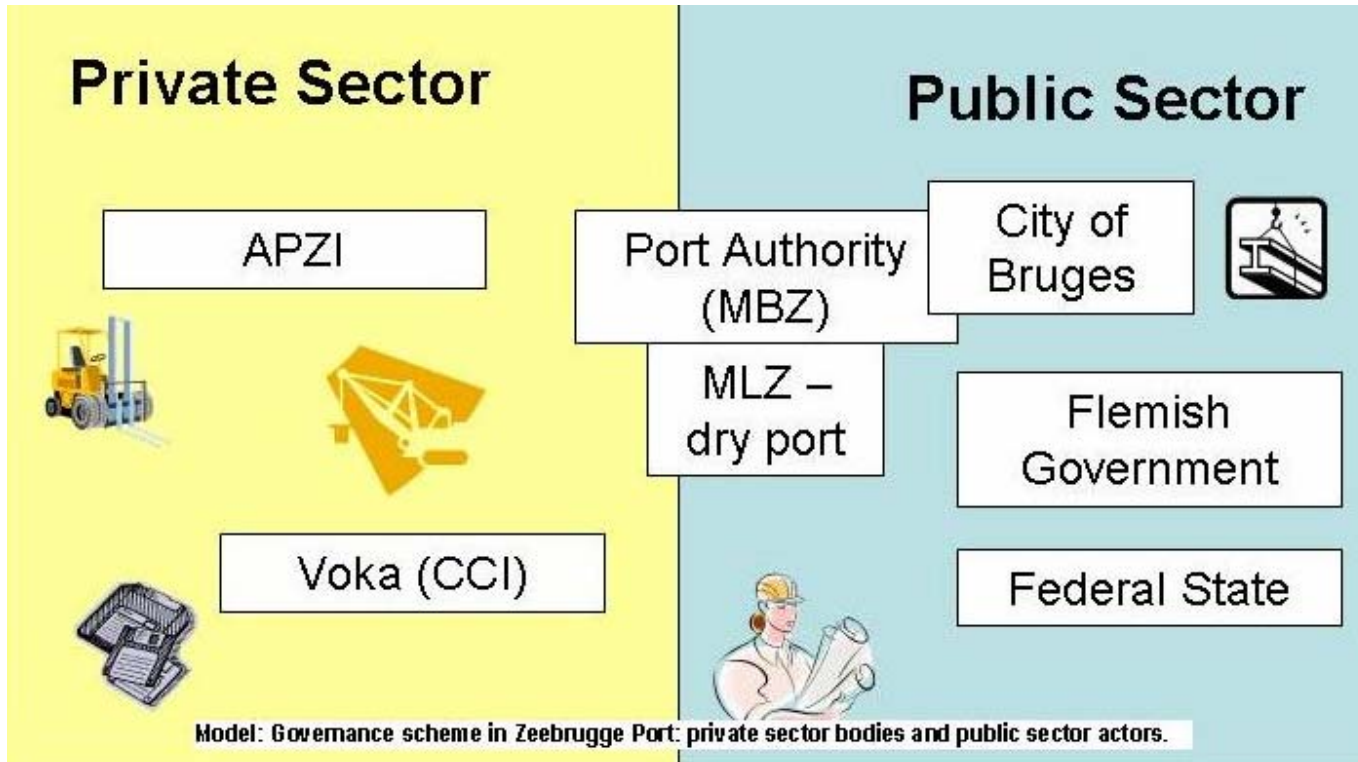


Zeebrugge





Governance Scheme Port of Zeebrugge



Dryports as Logistic Nodes

Extended Gateway: Zeebrugge, Bremen/Bremerhaven

Gateway: Felixstowe

Inland Hub/Bi-Modal Terminal: Falköping



Structure

- Introduction: Why Dryports?
- Overview Cases
- **Conclusions: The Potential of Dryports**
- Recommendations: Clearing Bureau or Expert Network?

Dryports as multiplication of options:

Integration in logistic chains (macro-level)

- Infrastructure (multimodal etc.)
- Spatial structure (freight village etc.)
- Connection to sea port (shuttle – rail or barge)

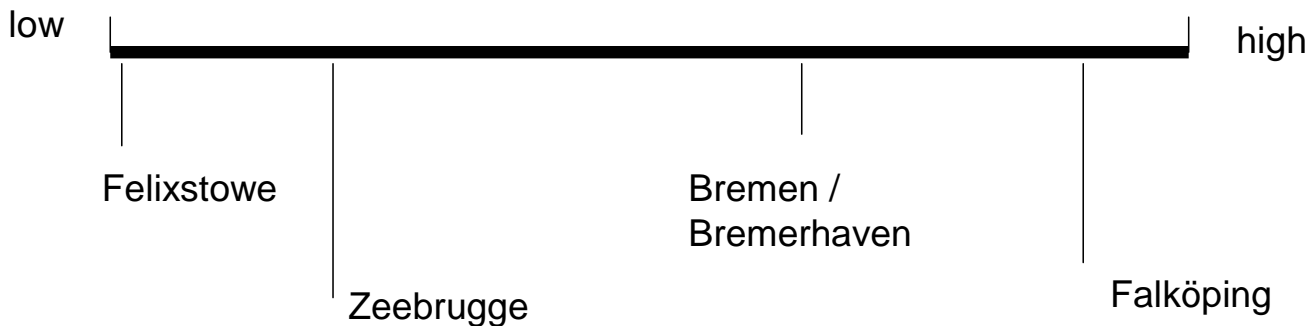
Additional features

- Integration in regional structures (local content; meso-level)
- Integration in stakeholder strategies (business models; micro-level/enterprises)

Function of Public Administration

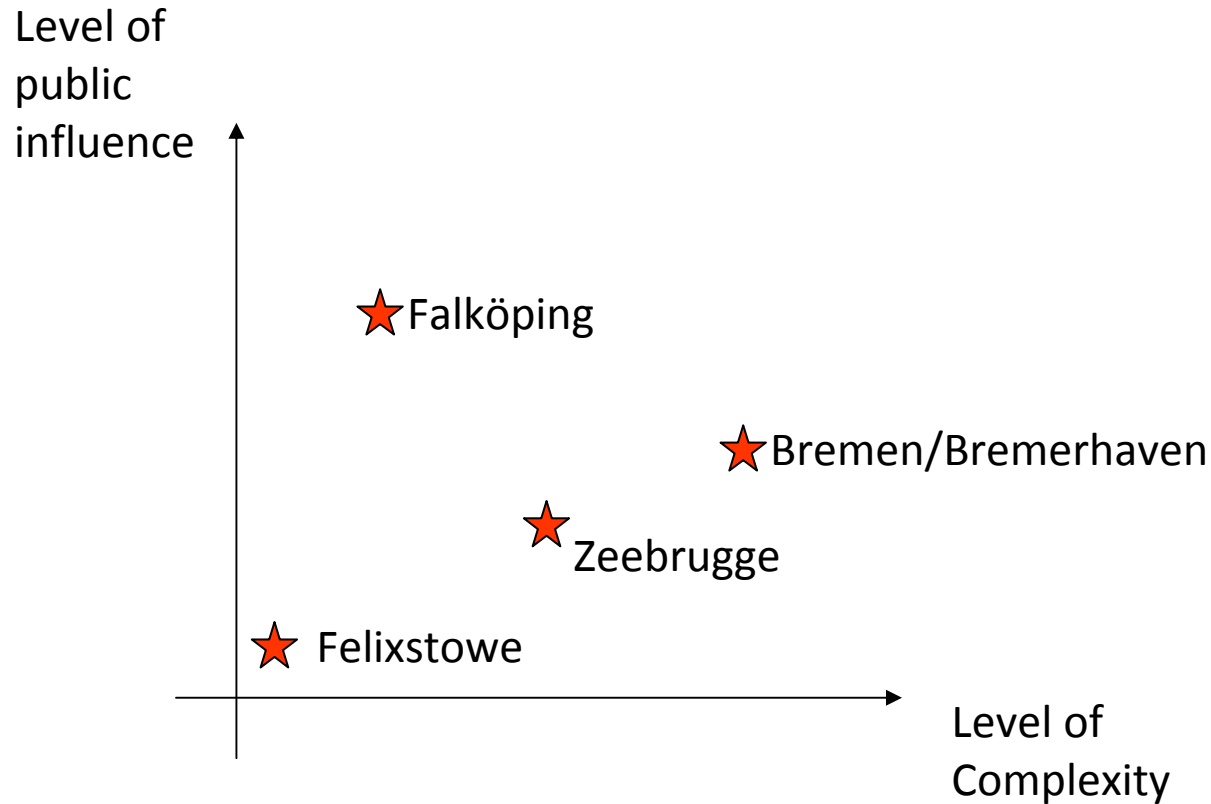
Level of public influence

- Initiation
- Implementation
- Operation





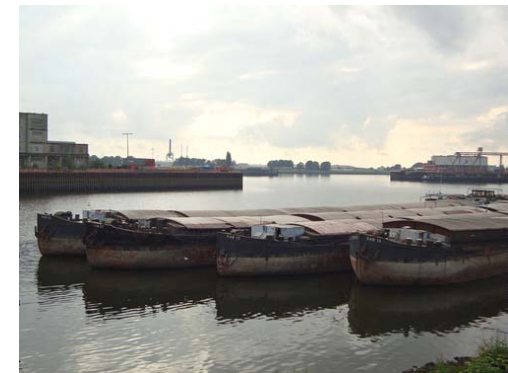
Public Influence and Complexity





Structure

- Introduction: Why Dryports?
- Overview Cases
- Conclusions: The Potential of Dryports
- **Recommendations: Clearing Bureau or Expert Network?**



Governance Solutions: different conditions (stakeholders, logistic chains, business interests, cooperation etc.) require different solutions

- Transfer of responsibilities for common interest to one of the involved partners (example Zeebrugge)
- Establishment of new institution („roof“ organisation; example Bremen)
- Personal/Public authority to pull the strings (example Falköping)
- Market oriented solution for coordination (charging a lawyer's office; example Suffolk)

Recommendation

- Clearing bureau

or

- **Dryport consulting network
(practitioners, academics, public
authorities etc.)**



Thank You For Your Attention!