



Final Presentation of MP4 Pilots
MP4 Partner Meeting Hamburg – June 2012



Sheaf Valley Park
2008 -2012





Final Presentation of MP4 Pilots

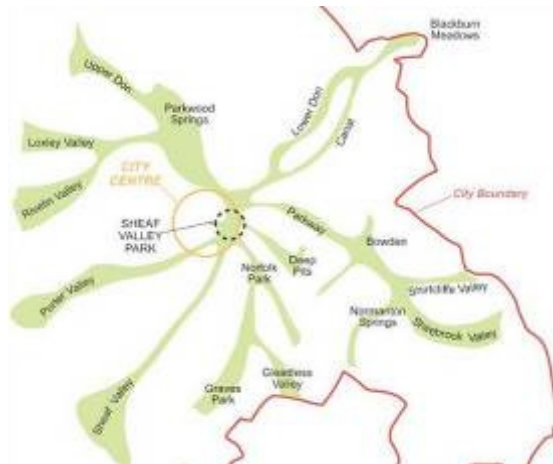
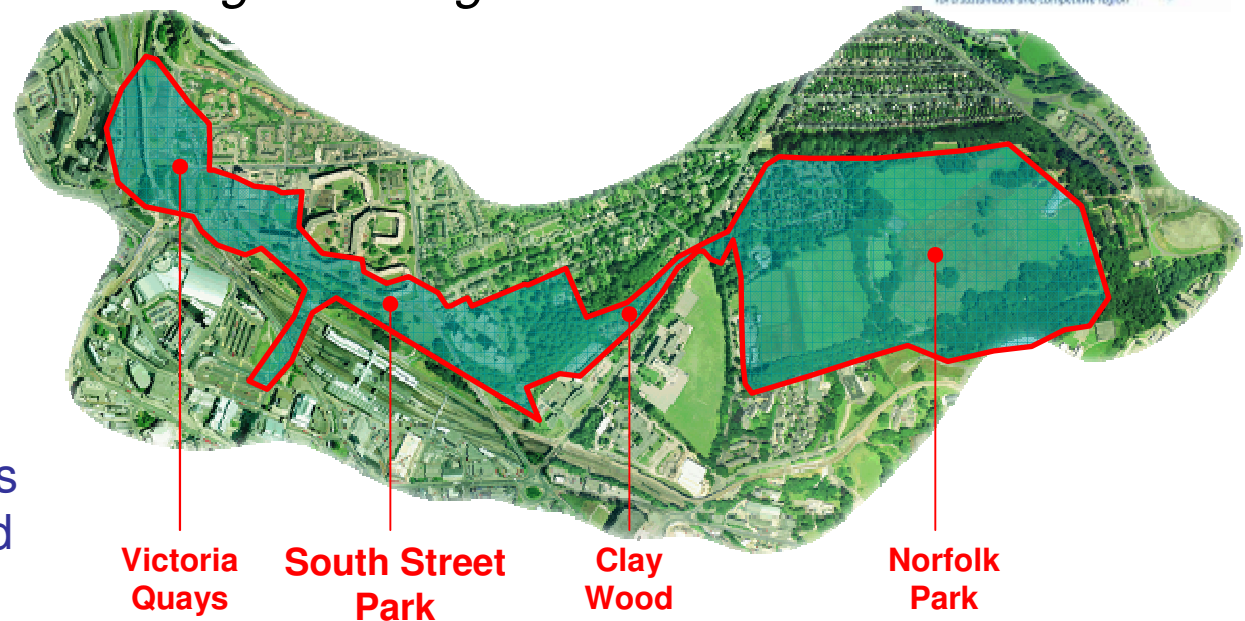
MP4 Partner Meeting Hamburg – June 2012



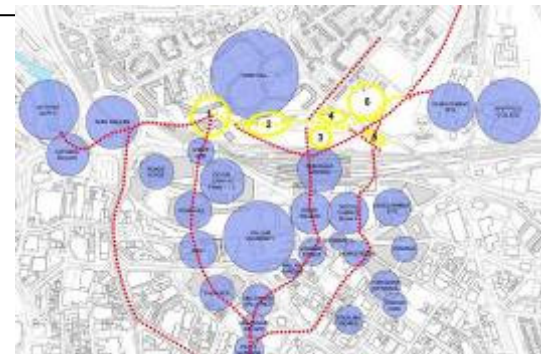
Final Presentation of MP4 Pilots

MP4 Partner Meeting Hamburg – June 2012

South Street is phase 1 of Sheaf Valley Park, a wider network of open spaces in Sheffield to be connected and improved.
Improving direct connections to the nearby city centre and transport hubs



Sheaf Valley Park – the vision



Final Presentation of MP4 Pilots

MP4 Partner Meeting Hamburg – June 2012

- Investing in abused and unsafe sloping, semi-natural, central open space
- Improving safety through lighting
- Upgrading management quality
- Creating the first facilities for the site – events area
- Quality and distinctive materials
- Phase 1 City Arboretum – sustaining green infrastructure
- Reinforcing Park Hill regeneration

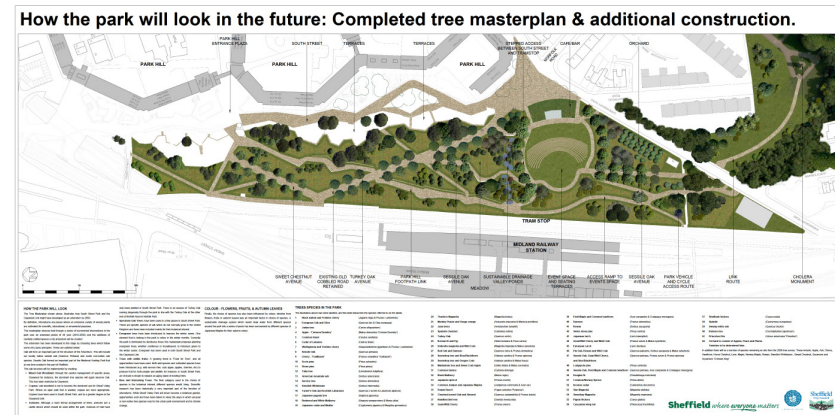




Final Presentation of MP4 Pilots
MP4 Partner Meeting Hamburg – June 2012



- Funding for South Street from multiple sources including MP4 allowed early design to be developed working closely with Friends of group and local members
- Proposed designs put out to consultation in a variety of city venues at a variety of times
- Numerous challenging issues arose such as problems with landownership



Final Presentation of MP4 Pilots

MP4 Partner Meeting Hamburg – June 2012

Permission to proceed required future
management arrangements – solution - a “
temporary maintenance budget
Final design tailored to budget and out to tender
Competitive price allowed whole scheme to be built
Community tree planting event and site visits
during construction
Scheme construction and completion
Launch event



Before



During



After



Final Presentation of MP4 Pilots

MP4 Partner Meeting Hamburg – June 2012



Outlook / Next steps

- The site will continue to establish with new meadows and grasslands and arbortum planting
- Maintenance works will be handed over to the Parks team
- Summer season of events held including theatre and another community friends lead event – to be monitored for how the events space performs
- Next phase of Sheaf Valley being planned providing more pedestrian and cycle links connecting into phase 1 works
- Friends group continue to play a role with strong interest in next phases – work lead by Parks officer
- There are potentially many phases to this project, some realised as Park Hill Flats undergo further renovation phases creating the pressure to provide better open space facilities.
- The events space has the potential to become a significant resource that could be expanded with ultimately the potential for indoor support facilities



Final Presentation of MP4 Pilots

MP4 Partner Meeting Hamburg – June 2012



Lessons learnt

- *Please comment on the process and the results from the beginning:
What went well – what went wrong?
Although fraught with problems the final construction of the events space was very beautiful. The launch was successful. The scheme had an overrun budget and is still trying to secure additional funding to cover this.*
- *What kind of obstacles came up?
A number of issues arose during the process –land ownership records caused a problem in park access which meant a redesign; Safety issues cropped during the contract which meant a rapid redesign process. What kind of solutions did you find?*
- *If you reflect on the process and the results what is important?
Constant financial management, communication with internal and external partners, can do spirit in the face of difficult conditions*
- *What would you do differently if you could start the project again?
Not apply for additional ERDF funding for which this project is a weak argument*

Final Presentation of MP4 Pilots

MP4 Partner Meeting Hamburg – June 2012

Lessons learnt

1. Partnerships: partnerships with community groups are ever changing as groups evolve. They should never be underestimated for their potential contribution to project development and long-term utilisation.
2. Governance/Engagement: The people involved during multi-phased place-making and into place-keeping will vary through time. Governance needs to shift accordingly to ensure learning is passed on and good decision are based on strong partnership and communication





Final Presentation of MP4 Pilots

MP4 Partner Meeting Hamburg – June 2012



1. Finance and Funding: Although the ideal would be to have place-keeping resourcing sorted before place-making this seems very difficult to achieve. Future arguments for resourcing will be dependent on good decision making from the start in the placemaking. Including whether the project should go ahead or not.
2. Policy: Although there is an increasing emphasis on place-keeping through the green and open space strategy, investment opportunities, such as south street park, and pressure from community assemblies for visible projects combined with available capital funding still hold the attention of those involved. There still seems to be a blind hope that somehow existing budgets can be stretched.
3. Evaluation: More emphasis needs to be placed on pre place-making evaluation so that some form of baseline can be established. Expertise in this is not obvious within Sheffield City Council

Final Presentation of MP4 Pilots

MP4 Partner Meeting Hamburg – June 2012

Lessons learnt

- Projects are expected to undertake lesson learnt exercises to which these will be fed in
- The issue of place-keeping is an ongoing problem for SCC. It is intended that an overarching place keeping report will be written for the emerging city centre spaces. This will be supplemented by MP4 conclusions.



Final Presentation of MP4 Pilots

MP4 Partner Meeting Hamburg – June 2012

Transnational partnership

- For this project the transnational collaboration with partners from NSR in MP4 was brief but supportive





Final Presentation of MP4 Pilots

MP4 Partner Meeting Hamburg – June 2012



“Famous last words”

- The future is unpredictable – state resources are up and down and communities change. Build to last in place making so that places can withstand changes in input or accept the need for renewal at a future date. Our city spaces are where people can get involved and enjoy themselves – if we take the attitude they are relatively ephemeral then we need to value the day to day benefits and not get too hung up on achieving a perfectly formed future
- Lots of frustration and stress (still is), but ultimately a result that is satisfying and here for the long-term and can only continue growing
- Any recommendations for (1) other practitioners. Make sure you keep those elements that may appear non essential but in actual fact make a place individual and therefore more able to secure management support for (2) politicians/policy-makers. Take a long-term view and be strong in the face of community expectation – rushing place-making will leave a legacy of difficult place-keeping. Focus what you can on place-making achieved through inspired place keeping and for (3) researchers – the creative recording of day to day benefits as a tool to push the profile for open space resources – the role of the environment in people’s lives is still not well portrayed.

Final Presentation of MP4 Pilots

MP4 Partner Meeting Hamburg – June 2012

Contact Details

- Roger Nowell, roger.nowell@sheffield.gov.uk

